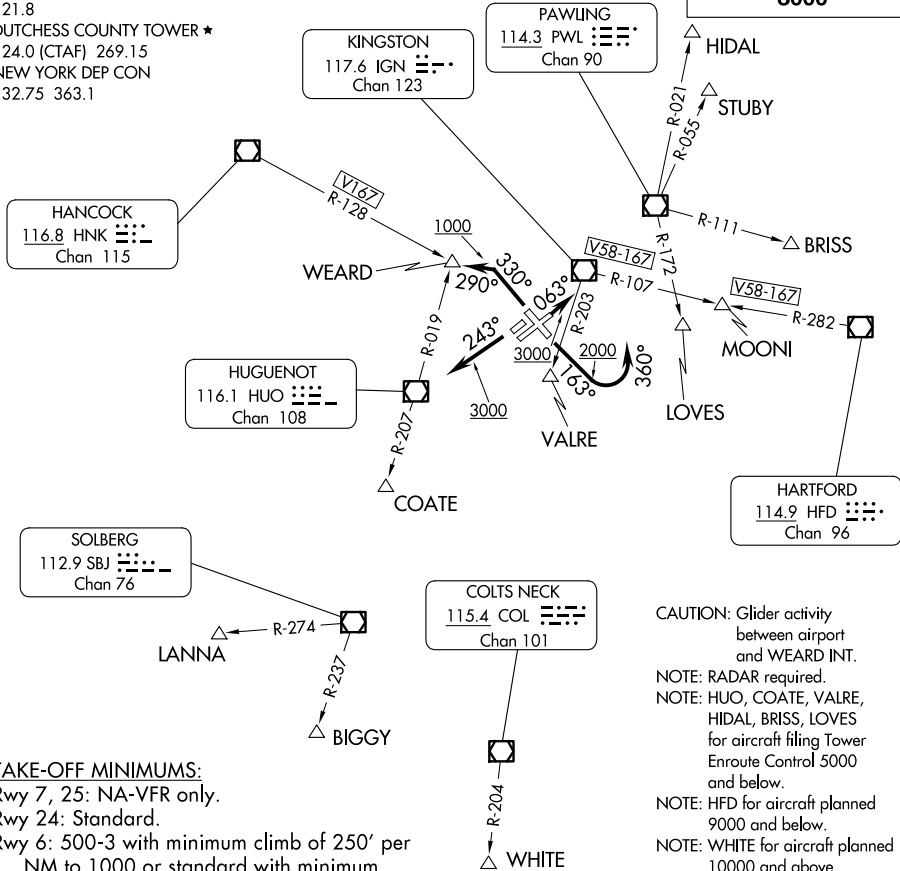


ATIS 126.75
GND CON
121.8
DUTCHESS COUNTY TOWER ★
124.0 (CTAF) 269.15
NEW YORK DEP CON
132.75 363.1

**TOP ALTITUDE:
3000**



TAKE-OFF MINIMUMS:

- Rwy 7, 25: NA-VFR only.
- Rwy 24: Standard.
- Rwy 6: 500-3 with minimum climb of 250' per NM to 1000 or standard with minimum climb of 537' per NM to 800.
- Rwy 15: Standard with minimum climb of 370' per NM to 700.
- Rwy 33: Standard with minimum climb of 270' per NM to 1500.

- CAUTION: Glider activity between airport and WEARD INT.
- NOTE: RADAR required.
- NOTE: HUGUENOT, COATE, VALRE, HIDAL, BRISS, LOVES for aircraft filing Tower Enroute Control 5000 and below.
- NOTE: HFD for aircraft planned 9000 and below.
- NOTE: WHITE for aircraft planned 10000 and above.
- NOTE: Chart not to scale.

DEPARTURE ROUTE DESCRIPTION

TAKEOFF RUNWAY 6: Climb heading 063° to 3000, thence. . . .

TAKEOFF RUNWAY 15: Climb heading 163° to 2000, then turn left heading 360°, maintain 3000, thence. . . .

TAKEOFF RUNWAY 24: Climb heading 243° to 3000, thence. . . .

TAKEOFF RUNWAY 33: Climb heading 330° to 1000, then turn left heading 290°, maintain 3000, thence. . . .

. . . . via radar vectors to assigned Route/Fix, expect clearance to filed altitude/flight level within ten (10) minutes after departure.

LOST COMMUNICATIONS: If radio contact is not established/lost within 2 minutes after departure, proceed on course and climb to 5000. Ten minutes after departure, climb to filed altitude/flight level.

NE-2, 11 JUN 2026 to 09 JUL 2026

NE-2, 11 JUN 2026 to 09 JUL 2026