

# RNAV (GPS) RWY 18R LAKEFRONT (NEW)

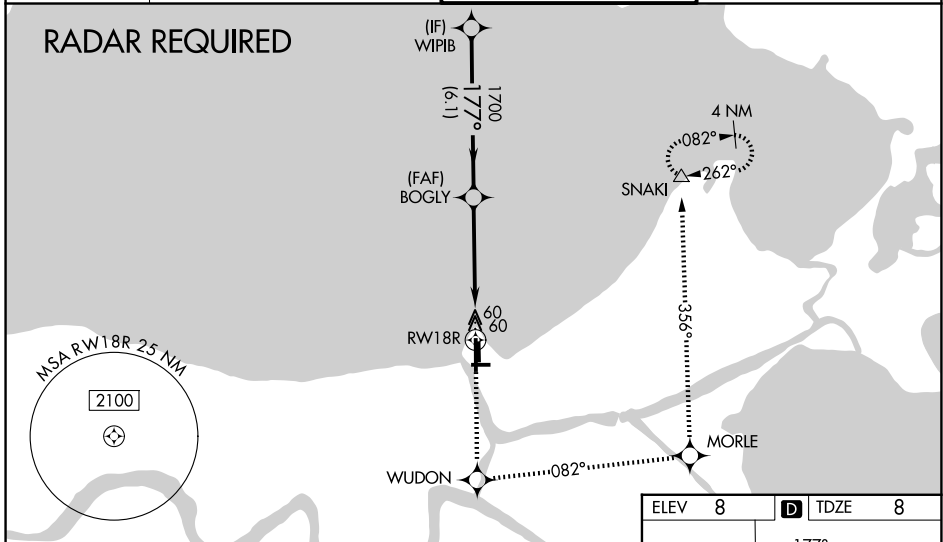
WAAS CH <b>61302</b> W18A	APP CRS <b>177°</b>	Rwy Ldg <b>5510</b> TDZE 8 Apt Elev <b>8</b>
---------------------------------	------------------------	---

**⚠** Inoperative table does not apply to LPV all Cats. For inoperative MALSR, increase LNAV Cat A and B visibility to 1 mile. Baro-VNAV NA when using Louis Armstrong New Orleans Intl altimeter setting. For uncompensated Baro-VNAV systems, LNAV/VNAV NA below -1.5°C (5°F) or above 49°C (120°F). DME/DME RNP-0.3 NA. Visibility reduction by helicopters NA. When local altimeter setting not received; use Louis Armstrong New Orleans Intl altimeter setting and increase all DA 29 feet and all MDA 40 feet; increase LNAV/VNAV all Cats and LNAV and Circling Cat C and D visibility ¼ mile. VDP NA with Louis Armstrong New Orleans Intl altimeter setting. For inoperative MALSR when using Louis Armstrong New Orleans Intl altimeter setting, increase LNAV Cat A and B visibility to 1 mile.

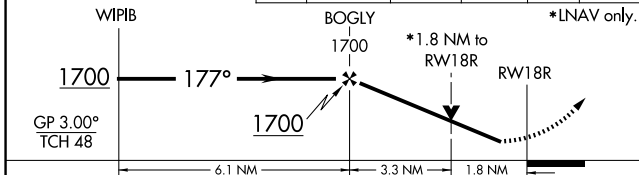
**MALSR**

**MISSED APPROACH:**  
Climb to 2100 direct WUDON and left turn on track 082° to MORLE and on track 356° to SNAKI and hold.

ATIS <b>124.9</b>	NEW ORLEANS APP CON <b>133.15 290.3 (N)</b> <b>123.85 256.9 (S)</b>	LAKEFRONT TOWER * <b>118.95 (CTAF) 0</b>	GND CON <b>121.7 335.575</b>
----------------------	---	---	---------------------------------



Procedure Turn NA	2100 ↑	WUDON ✦	tr 082° ↘	MORLE ✦	tr 356° ↘	SNAKI △
-------------------	--------	---------	-----------	---------	-----------	---------



CATEGORY	A	B	C	D
LPV DA		258-¾	250 (300-¾)	
LNAV/DA VNAV		521-1¼	513 (600-1¼)	
LNAV MDA	640-¾	632 (700-¾)	640-1¼ 632 (700-1¼)	640-1½ 632 (700-1½)
CIRCLING	640-1	632 (700-1)	700-2 692 (700-2)	820-2¾ 812 (900-2¾)

ELEV 8	D	TDZE 8
--------	---	--------

MIRL Rwy 18R-36L  
MIRL Rwy 9-27 and 18L-36R  
REIL Rwy 9, 18L, 36L and 36R

SC-4, 11 JUN 2026 to 09 JUL 2026

SC-4, 11 JUN 2026 to 09 JUL 2026