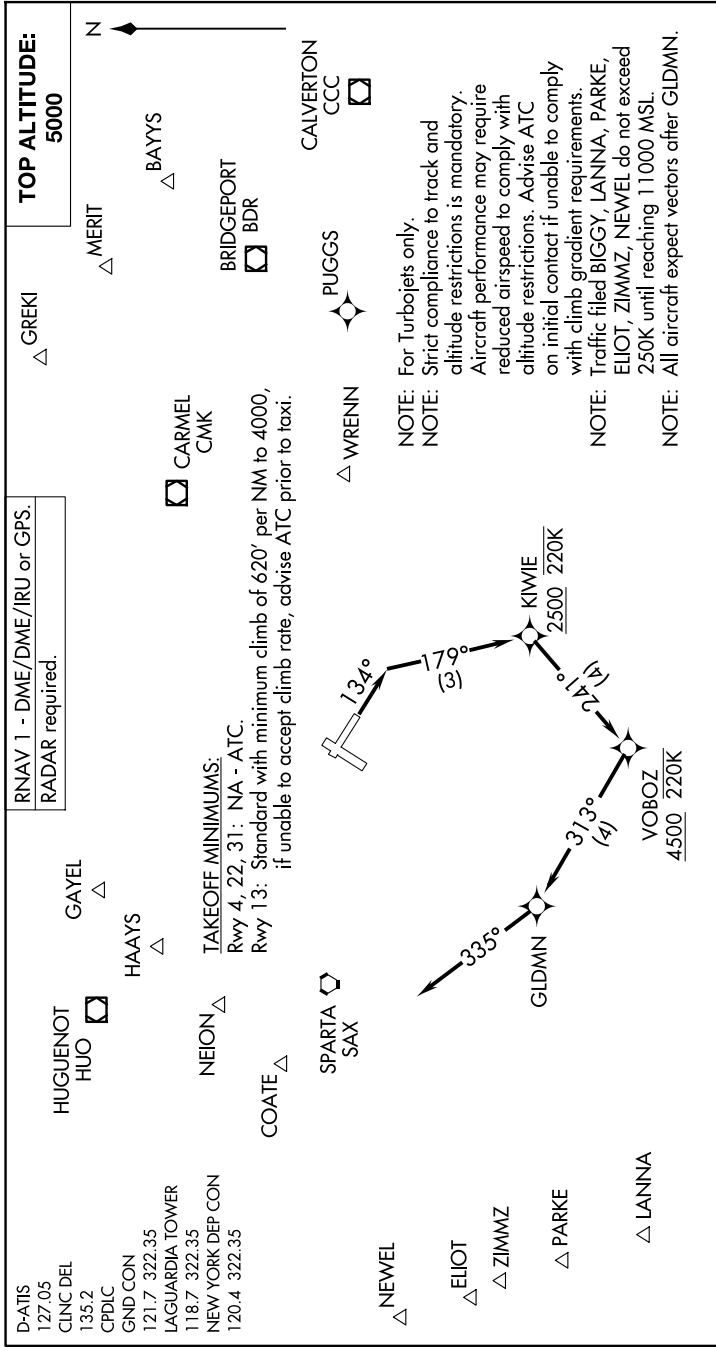


GLDMN EIGHT DEPARTURE (RNAV)

9200 JUN 60 11 JUN 2026 to 09 JUL 2026



DEPARTURE ROUTE DESCRIPTION

TAKEOFF RUNWAY 13: Climb on heading 134° to intercept course 179° to cross KIWIE at or above 2500 and at or below 220K, then on track 241° to cross VOBOZ at or above 4500 and at or below 220K, then on track 313° to GLDMN, then on track 335° for RADAR vector on course. Maintain 5000 or as assigned by ATC. Expect clearance to filed altitude/flight level 10 minutes after departure.

ALL AIRCRAFT: ATC CLIMB GRADIENT: If unable to accept climb rate advise ATC prior to taxi.
Rwy 13: 620' per NM to 4000.

NOTE: Chart not to scale.

GLDMN EIGHT DEPARTURE (RNAV)

NE-2, 11 JUN 2026 to 09 JUL 2026