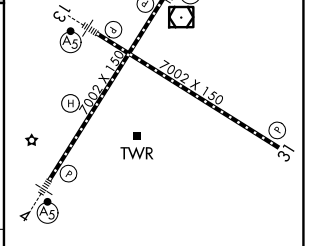
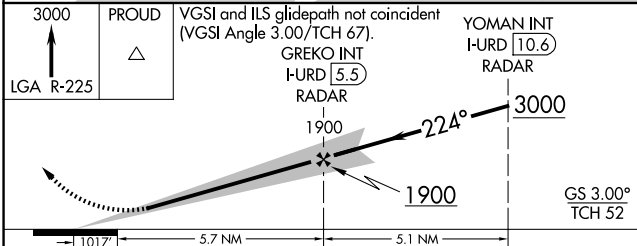
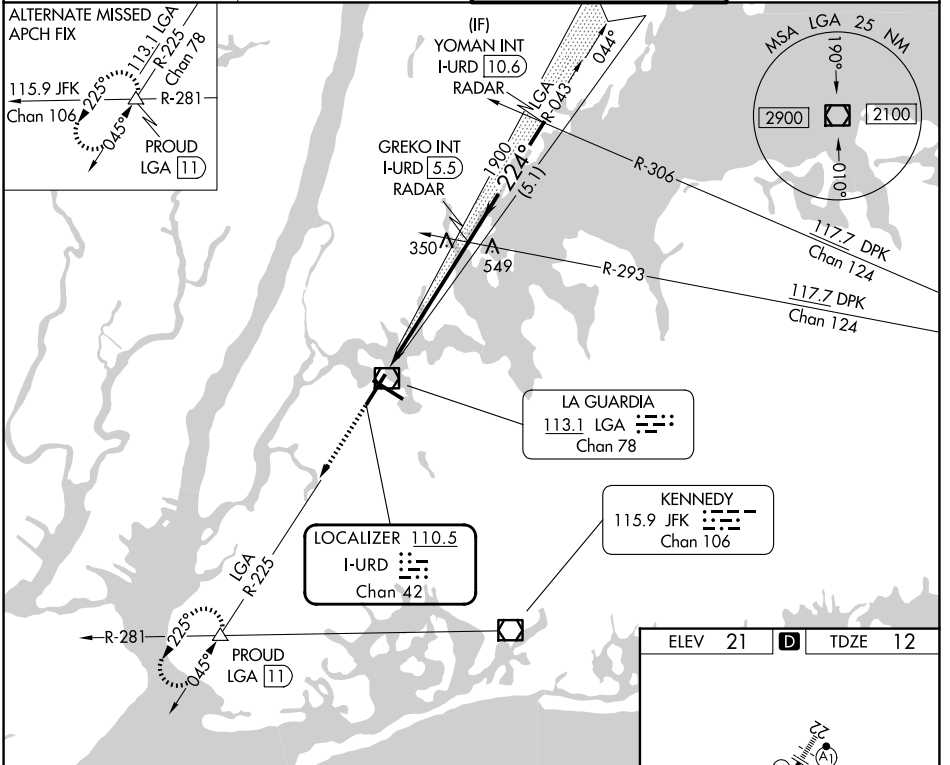


LOC/DME I-URD <b>110.5</b> Chan <b>42</b>	APP CRS <b>224°</b>	Rwy Ldg <b>7002</b> TDZE <b>12</b> Apt Elev <b>21</b>
---	------------------------	---

# ILS RWY 22 (SA CAT I & II) LAGUARDIA (LGA)

RADAR required for procedure entry.	ALSF-1 	MISSED APPROACH: Climb to 3000 on LGA VOR/DME R-225 to PROUD INT/LGA11 DME and hold, continue climb-in-hold to 3000.
-------------------------------------	------------	--

D-ATIS <b>125.95</b>	NEW YORK APP CON <b>120.8 322.35</b>	LAGUARDIA TOWER <b>118.7 322.35</b>	GND CON <b>121.7 322.35</b>
-------------------------	---	--	--------------------------------



1017	5.7 NM	5.1 NM	
CATEGORY	A	B	C
S-ILS 22	SA CAT I RA 162/14	150 DA 162	
S-ILS 22	SA CAT II RA 112/12	100 DA 112	

TDZL/RCLS Rwy 4, 13 and 22  
 HIRL Rwy 4-22 and 13-31  
 REIL Rwy 31

## SA CATEGORY I & II ILS - SPECIAL AIRCREW & AIRCRAFT CERTIFICATION REQUIRED

NE-2, 11 JUN 2026 to 09 JUL 2026

NE-2, 11 JUN 2026 to 09 JUL 2026