

LOC/DME I-GDI 108.5 Chan 22	APP CRS 134°	Rwy Ldg 7002 TDZE 12 Apt Elev 21
---	------------------------	---

ILS or LOC RWY 13

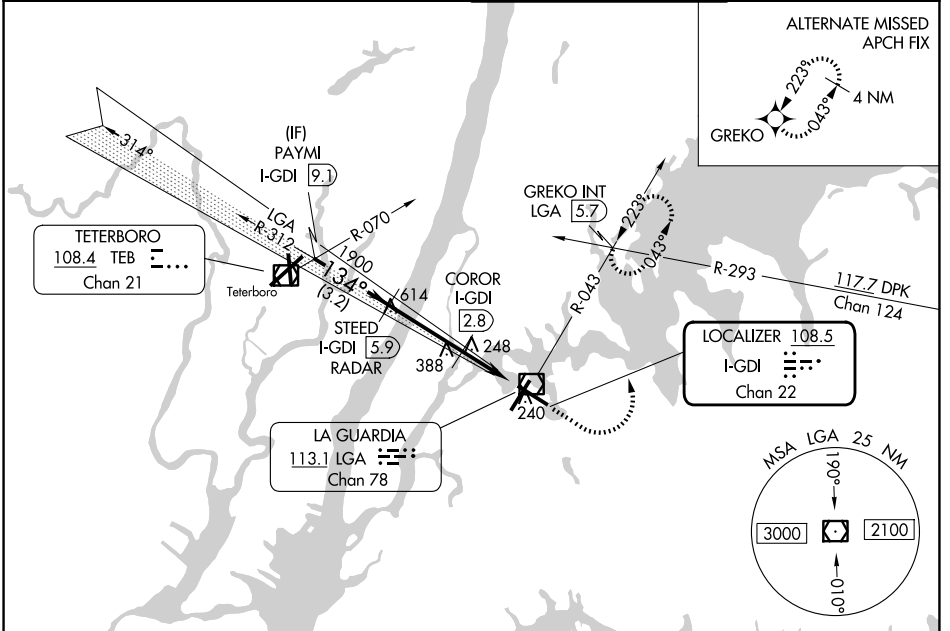
LAGUARDIA (LGA)

Radar required for procedure entry. DME or RADAR required for LOC only.

▼ For inop ALS, increase S-LOC 13 Cats C/D visibility to 2½ SM.
▲ Circling NA northwest of Rwy 4 and southwest of Rwy 13.

MALSR MISSED APPROACH: Climb to 800 then climbing left turn to 2000 on LGA VOR/DME R-043 to GREKO INT/LGA 5.7 DME and hold, continue climb-in-hold to 2000.

D-ATIS 125.95	NEW YORK APP CON 120.8 322.35	LAGUARDIA TOWER 118.7 322.35	GND CON 121.7 322.35
-------------------------	---	--	--------------------------------



VGSI and ILS glidepath not coincident (VGSI Angle 3.10/TCH 55).	800	2000	ELEV 21	TDZE 12
PAYMI I-GDI 9.1	↑	↻	D	
STEED I-GDI 5.9 RADAR	*1900 when assigned by ATC	LAGA R-043		
*2800	134°	GREKO INT		
GS 3.10° TCH 49	1900	COROR I-GDI 2.8		
	800	I-GDI 1.7		
	3.2 NM	1.1 NM		
	3.1 NM	1.3 NM		
CATEGORY	A	B	C	D
S-ILS 13		212/18	200 (200-½)	
S-LOC 13	800/24 788 (800-½)	800/40 788 (800-¾)	800-1¼ 788 (800-1¼)	
CIRCLING	800-1 779 (800-1)	800-1¼ 779 (800-1¼)	1080-3 1059 (1100-3)	1260-3 1239 (1300-3)
COROR FIX MINIMUMS				
S-LOC 13	500/24	488 (500-½)	500/50	488 (500-1)
CIRCLING	700-1	679 (700-1)	1080-3	1260-3 1239 (1300-3)
TWR				
TDZL/RCLS Rws 4, 13 and 22 HIRL Rws 4-22 and 13-31 REIL Rwy 31				
FAF to MAP 5.5 NM				
Knots	60	90	120	150 180
Min:Sec	5:30	3:40	2:45	2:12 1:50

NE-2, 11 JUN 2026 to 09 JUL 2026

NE-2, 11 JUN 2026 to 09 JUL 2026