

LOC/DME I-URD <b>110.5</b> Chan <b>42</b>	APP CRS <b>224°</b>	Rwy Ldg <b>7002</b> TDZE <b>12</b> Apt Elev <b>21</b>
---	------------------------	---

# ILS or LOC RWY 22

LAGUARDIA (LGA)

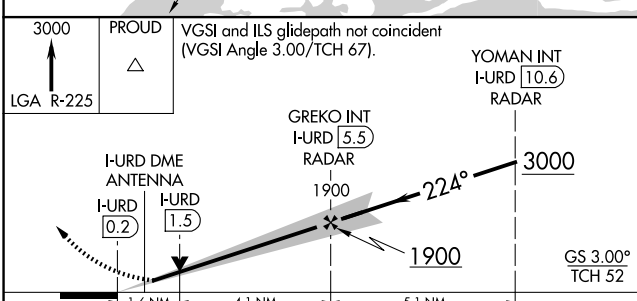
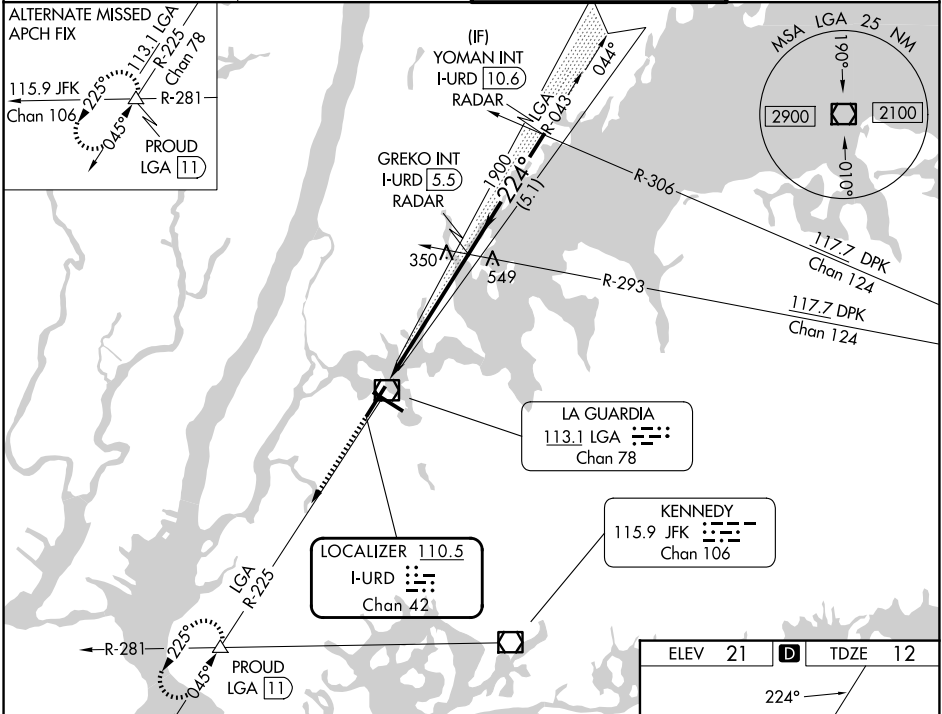
RADAR required for procedure entry. RADAR or DME required for LOC only.

ALSIF-1

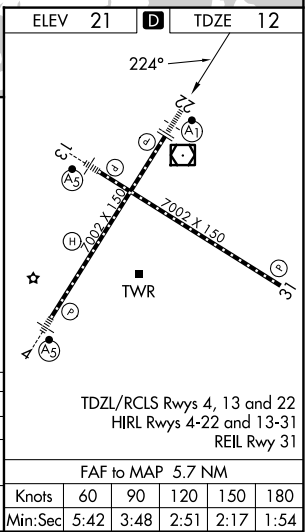
MISSED APPROACH: Climb to 3000 on LGA VOR/DME R-225 to PROUD INT/LGA 1.1 DME and hold, continue climb-in-hold to 3000.

Circling NA northwest of Rwy 4 and southwest of Rwy 13.

D-ATIS <b>125.95</b>	NEW YORK APP CON <b>120.8 322.35</b>	LAGUARDIA TOWER <b>118.7 322.35</b>	GND CON <b>121.7 322.35</b>
-------------------------	---	--	--------------------------------



CATEGORY	A	B	C	D
S-ILS 22	212/18 200 (200-½)			
S-LOC 22	600/24 588 (600-½)		600-1¼ 588 (600-1¼)	
CIRCLING	700-1 679 (700-1)		1080-3 1260-3 1059 (1100-3) 1239 (1300-3)	



NE-2, 11 JUN 2026 to 09 JUL 2026

NE-2, 11 JUN 2026 to 09 JUL 2026