

# PARK VISUAL RWY 31

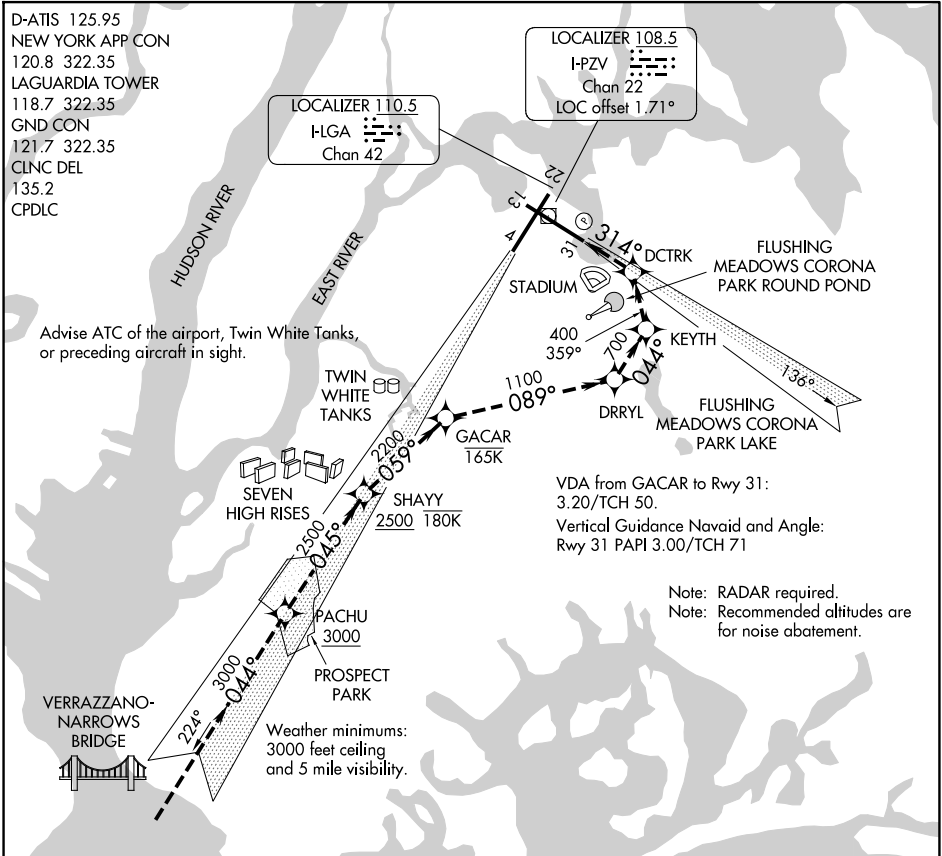
AL-289 (FAA)

LAGUARDIA (LGA)  
NEW YORK, NEW YORK

D-ATIS 125.95  
 NEW YORK APP CON  
 120.8 322.35  
 LAGUARDIA TOWER  
 118.7 322.35  
 GND CON  
 121.7 322.35  
 CLNC DEL  
 135.2  
 CPDLC

LOCALIZER 110.5  
 H-LGA  
 Chan 42

LOCALIZER 108.5  
 I-PZV  
 Chan 22  
 LOC offset 1.71°



VDA from GACAR to Rwy 31:  
 3.20/TCH 50.  
 Vertical Guidance Navaid and Angle:  
 Rwy 31 PAPI 3.00/TCH 71

Note: RADAR required.  
 Note: Recommended altitudes are for noise abatement.

NE-2, 11 JUN 2026 to 09 JUL 2026

NE-2, 11 JUN 2026 to 09 JUL 2026

|      |   |   |   |   |   |   |   |   |    |    |    |    |    |    |    |
|------|---|---|---|---|---|---|---|---|----|----|----|----|----|----|----|
| 1 NM | 2 | 3 | 4 | 5 | 6 | 7 | 8 | 9 | 10 | 11 | 12 | 13 | 14 | 15 | 16 |
|------|---|---|---|---|---|---|---|---|----|----|----|----|----|----|----|

When cleared for the PARK VISUAL RWY 31 aircraft may proceed via the RNAV (GPS) X RWY 31 approach to Rwy 31 and/or cross PACHU at 3000 or above and tracking 045° to SHAYY at or below 180K (Seven High Rises) at 2500 or above and turn right tracking 059° to GACAR at or below 165K (Twin White Tanks) then turn right tracking 089° to DRRYL (Flushing Meadows Corona Park Lake) then turn left tracking 044° to KEYTH (Flushing Meadows Corona Park Round Pond) then left turn tracking 359° to DCTRK (stadium) then left turn direct RWY 31.

# PARK VISUAL RWY 31

40°47'N-73°52'W

NEW YORK, NEW YORK  
LAGUARDIA (LGA)