


# RNAV (RNP) Z RWY 22

LAGUARDIA (LGA)

APP CRS	Rwy Ldg	<b>7002</b>
<b>224°</b>	TDZE	<b>12</b>
	Apt Elev	<b>21</b>

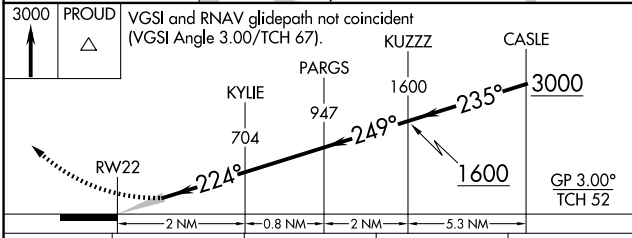
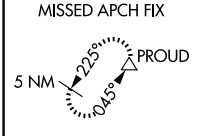
RNP AR APCH - GPS. RF required.

**NA** For uncompensated Baro-VNAV systems, procedure NA below -11°C or above 54°C. For inop ALS, increase RNP 0.30 DA\* visibility to RVR 5500.

ALSF-1 

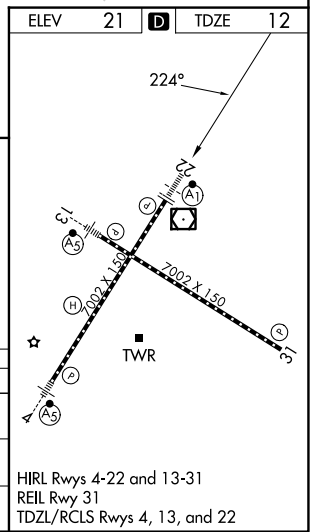
MISSED APPROACH: Climb to 3000 direct PROUD and hold, continue climb-in-hold to 3000.  
\* Missed approach requires minimum climb of 397 feet per NM to 560.

D-ATIS <b>125.95</b>	NEW YORK APP CON <b>120.8 322.35</b>	LAGUARDIA TOWER <b>118.7 322.35</b>	GND CON <b>121.7 322.35</b>
-------------------------	---	--	--------------------------------



CATEGORY	A	B	C	D
RNP 0.30 DA*	384/35	372 (400- $\frac{3}{4}$ )		
RNP 0.30 DA	445/40	433 (500- $\frac{3}{4}$ )		

**AUTHORIZATION REQUIRED**



NE-2, 11 JUN 2026 to 09 JUL 2026

NE-2, 11 JUN 2026 to 09 JUL 2026