

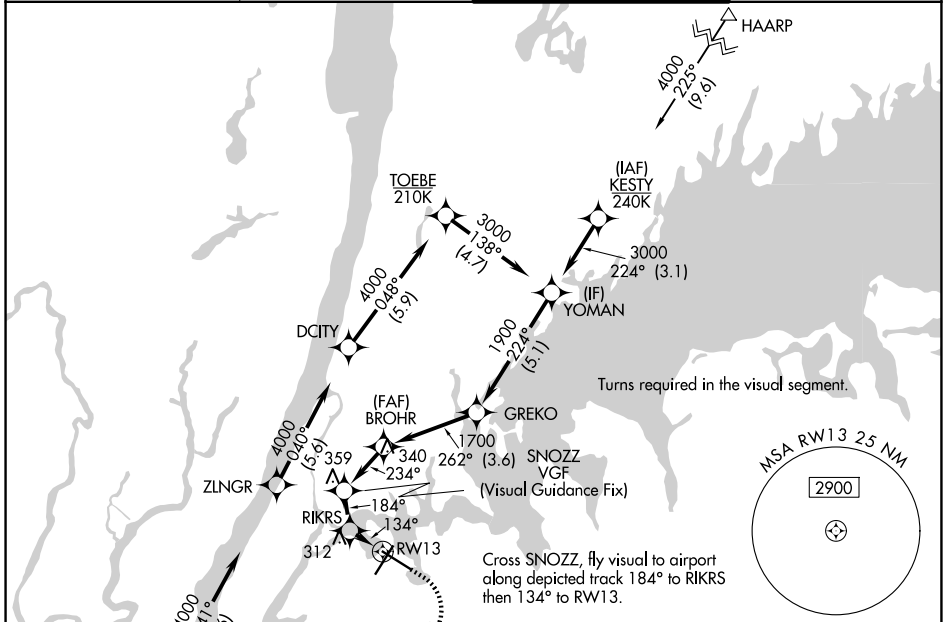
APP CRS	Rwy Ldg	<b>7002</b>
<b>134°</b>	TDZE	<b>12</b>
	Apt Elev	<b>21</b>

# RNAV (GPS) Y RWY 13

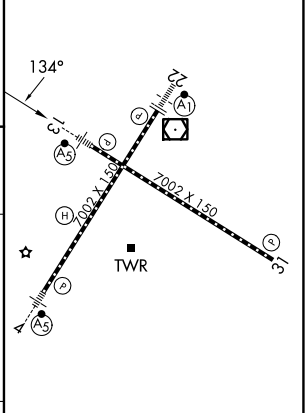
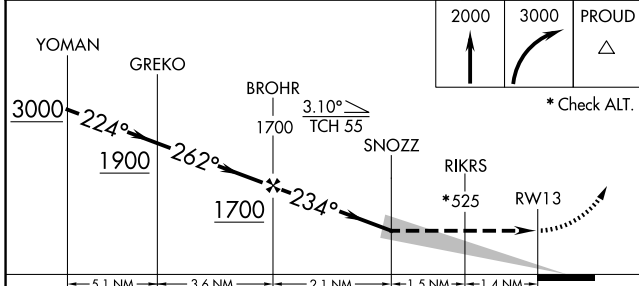
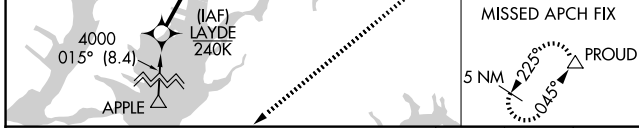
LAGUARDIA (LGA)

RNP APCH - GPS.	MALSR 	MISSED APPROACH: (Do not exceed 185K until Rwy 13 then do not exceed 210K until PROUD) Climb to 2000 on the extended visual approach track to Rwy 13, then climbing right turn to 3000 direct PROUD and hold.
RADAR required.		

D-ATIS <b>125.95</b>	NEW YORK APP CON <b>120.8 322.35</b>	LAGUARDIA TOWER <b>118.7 322.35</b>	GND CON <b>121.7 322.35</b>
-------------------------	---	--	--------------------------------



ELEV 21	<b>D</b> TDZE 12
---------	------------------



CATEGORY	A	B	C	D
LNVA MDA		1020-3	1008 (1000-3)	
TDZL/RCLS Rws 4, 13 and 22 HIRL Rws 4-22 and 13-31 REIL Rwy 31				

NE-2, 11 JUN 2026 to 09 JUL 2026

NE-2, 11 JUN 2026 to 09 JUL 2026