

RNAV (GPS) Y RWY 31

LAGUARDIA (LGA)

APP CRS	Rwy Ldg	7002
313°	TDZE	7
	Apt Elev	21

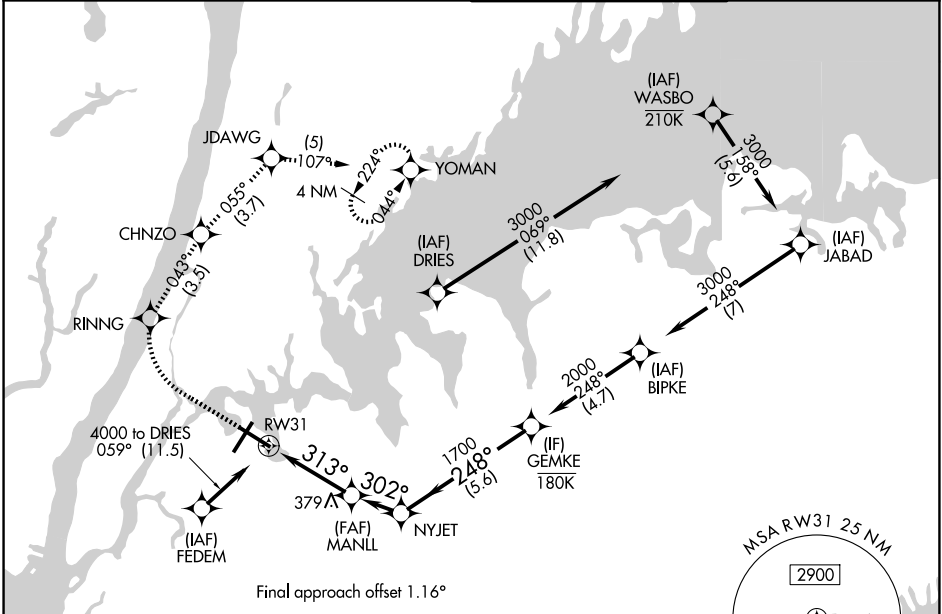
RNP APCH - GPS.

▼ Rwy 31 helicopter visibility reduction below RVR 5000 NA. For uncompensated Baro-VNAV systems, LNAV/VNAV NA below -11°C or above 54°C. Circling NA northwest of Rwy 4 and southwest of Rwy 13.

▲

MISSED APPROACH: (Do not exceed 210K until YOMAN) Climb to 620 then climbing right turn to 3000 direct RINNG and on track 043° to CHNZO and on track 055° to JDAWG and on track 107° to YOMAN and hold.

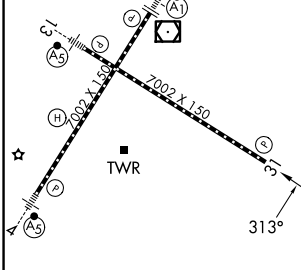
D-ATIS 125.95	NEW YORK APP CON 120.8 322.35	LAGUARDIA TOWER 118.7 322.35	GND CON 121.7 322.35
-------------------------	---	--	--------------------------------



NE-2, 11 JUN 2026 to 09 JUL 2026

NE-2, 11 JUN 2026 to 09 JUL 2026

ELEV 21	D	TDZE 7
---------	----------	--------



TDZL/RCLS Rws 4, 13 and 22
HIRL Rws 4-22 and 13-31
REL Rwy 31

620	3000	RINNG	tr 043°	CHNZO	tr 055°	JDAWG	tr 107°	YOMAN	GEMKE
VGSI and RNAV glidepath not coincident (VGSI Angle 3.00/TCH 71).									2000
RW31									1200
NYJET									1700
MANLL									313°
RW31									302°
RW31									248°
RW31									GP 3.10°
RW31									TCH 50

CATEGORY	A	B	C	D
LNAV/ DA VNAV	618-1¾		611 (600-1¾)	
LNAV MDA	640/55	633 (700-1)	640-1¾	633 (700-1¾)
CIRCLING	680-1	659 (700-1)	700-2 679 (700-2)	760-2¼ 739 (800-2¼)