

| | | |
|--|------------------------|--|
| WAAS CH 60918 W04A | APP CRS 044° | Rwy Ldg TDZE 7002 21 Apt Elev 21 |
|--|------------------------|--|

RNAV (GPS) Y RWY 4

LAGUARDIA (LGA)

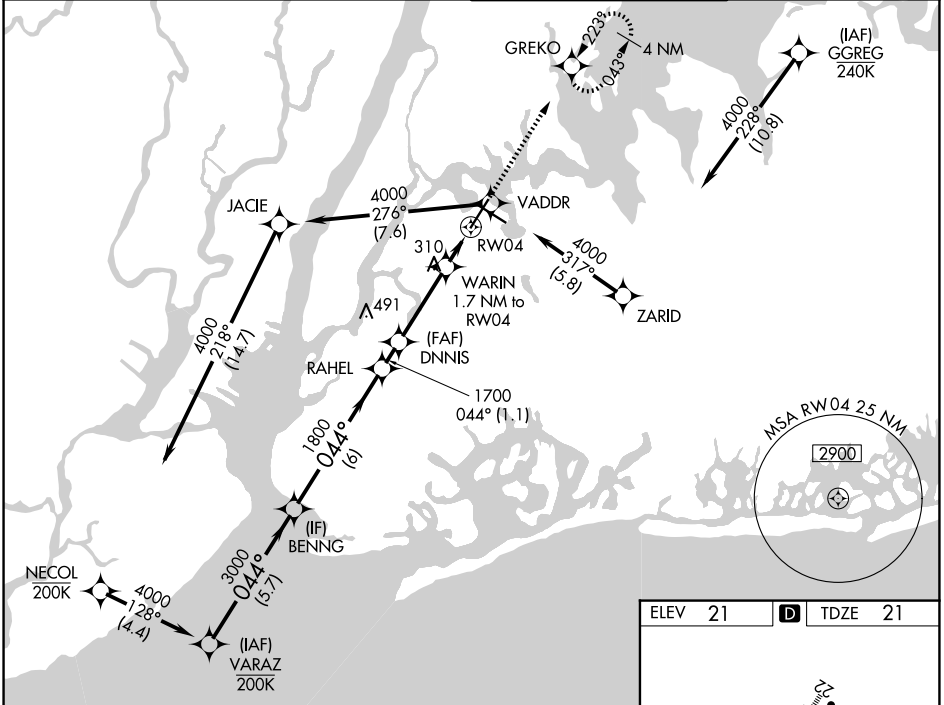
RNP APCH - GPS

▼ Rwy 4 helicopter visibility reduction below RVR 5000 NA. Inop table does not apply to LPV all Cats, and LNAV Cat A and B. For uncompensated Baro-VNAV systems, LNAV/VNAV NA below -12°C or above 54°C. For inop ALS, increase LNAV/VNAV all Cats visibility to 1 3/8 SM. Circling NA northwest of Rwy 4 and southwest of Rwy 13. Going below glidepath may not provide obstacle clearance inside DA. Crossing Rwy threshold below charted TCH may not provide required visual area obstacle clearance. RVR 2400 authorized with FD or AP or HUD to DA.

MALSR

MISSED APPROACH: Climb to 2000 direct GREKO and hold, continue climb-in-hold to 2000.

| | | | |
|-------------------------|---|--|--------------------------------|
| D-ATIS 125.95 | NEW YORK APP CON 120.8 322.35 | LAGUARDIA TOWER 118.7 322.35 | GND CON 121.7 322.35 |
|-------------------------|---|--|--------------------------------|

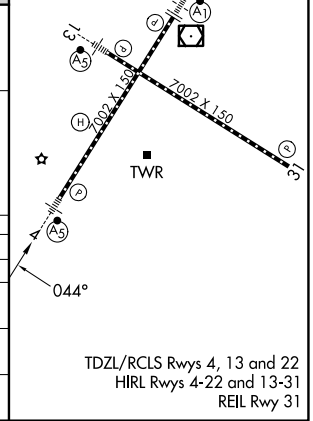


NE-2, 11 JUN 2026 to 09 JUL 2026

NE-2, 11 JUN 2026 to 09 JUL 2026

| | |
|---------|------------------|
| ELEV 21 | D TDZE 21 |
|---------|------------------|

| | | | | | | | | | | | | |
|-----------|--------|-------------|---------------|--------|-------|-------------|-------|----------------|------|-----------------|------|-------|
| BENNG | 3000 | 044° | RAHEL | 1800 | DNNIS | 1700 | WARIN | 1.7 NM to RW04 | RW04 | 640 | 2000 | GREKO |
| | | | | | | | | | | | | |
| 6 NM | | 1.1 NM | | 3.2 NM | | 1.7 NM | | | | | | |
| CATEGORY | A | B | | C | | D | | | | | | |
| LPV DA* | 271/40 | | 250 (300-3/4) | | | | | | | | | |
| LNAV/VNAV | 499/50 | | 478 (500-1) | | | | | | | | | |
| LNAV MDA | 560/50 | 539 (600-1) | | 560/55 | | 539 (600-1) | | | | | | |
| CIRCLING | 680-1 | 659 (700-1) | | 700-2 | | 760-2 1/4 | | 679 (700-2) | | 739 (800-2 1/4) | | |



TDZL/RCLS Rwy 4, 13 and 22
HIRL Rwy 4-22 and 13-31
REIL Rwy 31