

WAAS CH 48928 W31A	APP CRS 314°	Rwy Ldg TDZE Apt Elev	7002 7 21
--	------------------------	-----------------------------	--------------------------------------

RNAV (GPS) Z RWY 31

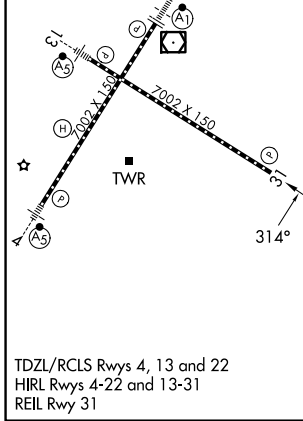
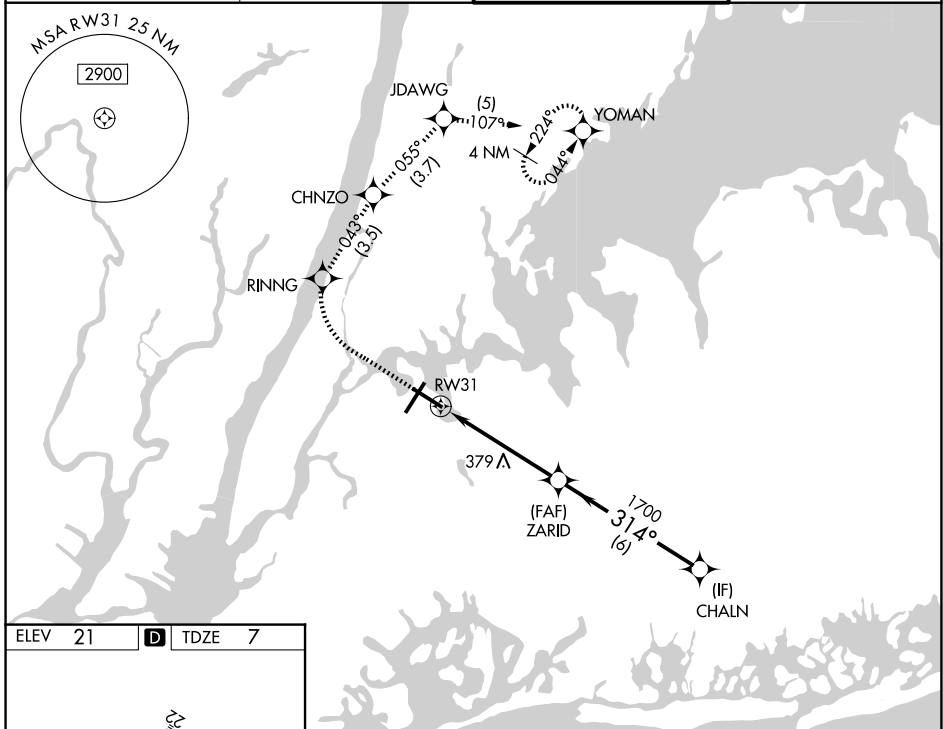
LAGUARDIA (LGA)

RNP APCH - GPS.

▼ Rwy 31 helicopter visibility reduction below RVR 5000 NA.
▲ For uncompensated Baro-VNAV systems, LNAV/VNAV NA below -11°C or above 54°C. Circling NA northwest of Rwy 4 and southwest of Rwy 13.

MISSED APPROACH: (Do not exceed 210K until YOMAN)
 Climb to 620 then climbing right turn to 3000 direct RINNG and on track 043° to CHNZO and on track 055° to JDAWG and on track 107° to YOMAN and hold, continue climb-in-hold to 3000.

D-ATIS 125.95	NEW YORK APP CON 120.8 322.35	LAGUARDIA TOWER 118.7 322.35	GND CON 121.7 322.35
-------------------------	---	--	--------------------------------



ELEV 21	D	TDZE 7							
620	3000	RINNG	tr 043°	CHNZO	tr 055°	JDAWG	tr 107°	YOMAN	CHALN
VGSI and RNAV glidepath not coincident (VGSI Angle 3.00/TCH 71). RWY 31 ZARID 1700 CHALN 2000 GP 3.10° TCH 50									
CATEGORY		A	B	C	D				
LPV DA		330/50		323 (400-1)					
LNAV/VNAV DA		618-1¼		611 (600-1¼)					
LNAV MDA		640/55	633 (700-1)		640-1¼	633 (700-1¼)			
CIRCLING		680-1	659 (700-1)		700-2	760-2¼		739 (800-2¼)	

NE-2, 11 JUN 2026 to 09 JUL 2026

NE-2, 11 JUN 2026 to 09 JUL 2026