

TNNIS SIX DEPARTURE (RNAV)
(TNNIS6, TNNIS) 25JUN15

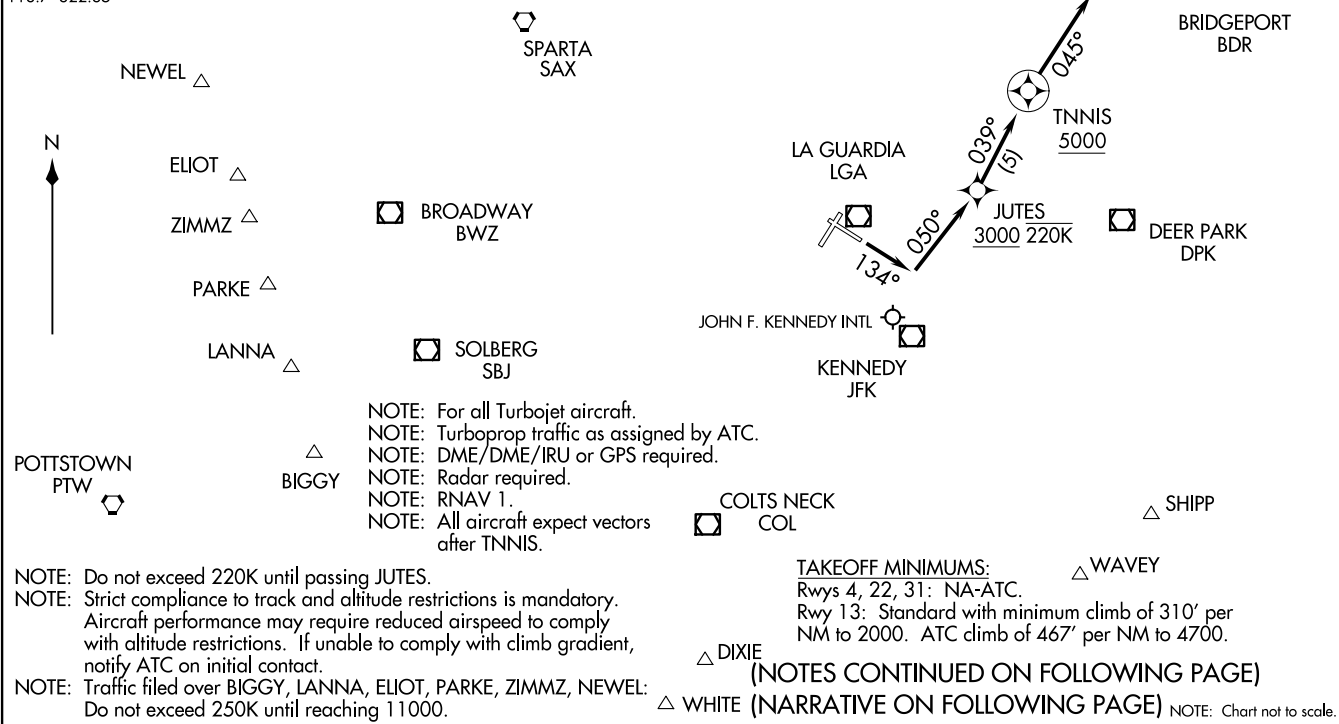
NEW YORK DEP CON
120.4 322.35
D-ATIS 127.05
CLNC DEL
135.2
CPDLC
GND CON
121.7 322.35
LAGUARDIA TOWER
118.7 322.35

TOP ALTITUDE:
5000

(TNNIS6, TNNIS) 26134
TNNIS SIX DEPARTURE (RNAV)

A1-289 (FAA)

LAGUARDIA (LGA)
NEW YORK, NEW YORK



(NOTES CONTINUED ON FOLLOWING PAGE)

△ WHITE (NARRATIVE ON FOLLOWING PAGE) NOTE: Chart not to scale.

NEW YORK, NEW YORK
LAGUARDIA (LGA)

TNNIS SIX DEPARTURE (RNAV)



DEPARTURE ROUTE DESCRIPTION

TAKEOFF RWY 13: Climb heading 134° to intercept course 050° to cross JUTES at or above 3000, then on track 039° to cross TNNIS at or above 5000, then on heading 045°, expect vectors after TNNIS, thence....

....maintain 5000 or as assigned by ATC. Expect clearance to filed altitude/flight level within ten (10) minutes after departure.

- NOTE: BAYYS departures expect vectors to BDR/BDR R-054.
- NOTE: COATE departures expect vectors to SAX/SAX R-311.
- NOTE: SHIPP departures expect vectors to JFK/JFK R-139.
- NOTE: WAVEY departures expect vectors to JFK/JFK R-156.
- NOTE: WHITE departures expect vectors to COL/COL R-204.
- NOTE: BIGGY departures expect vectors to SBJ/SBJ R-237.
- NOTE: DIXIE departures expect vectors to COL/COL R-192.
- NOTE: ELIOT departures expect vectors to SAX R-252. ELIOT authorized only for aircraft requesting a final altitude of 14000 or 16000.
- NOTE: GAYEL departures expect vectors to DPK R-320.
- NOTE: GREKI departures expect vectors to CMK R-057.
- NOTE: LANNA departures expect vectors to PTW R-059.
- NOTE: MERIT departures expect vectors to LGA R-055.
- NOTE: NEION departures expect vectors to LGA R-322.
- NOTE: PARKE departures expect vectors to BWZ/BWZ R-250.
- NOTE: HAAYS departures expect vectors to HUU.
- NOTE: ZIMMZ departures expect vectors to SAX R-250. ZIMMZ authorized only for aircraft requesting a final altitude of FL180 and above.
- NOTE: NEWEL departures expect vectors to SAX R-264. NEWEL authorized only for aircraft requesting a final altitude of at or above FL180.

NE-2, 11 JUN 2026 to 09 JUL 2026

NE-2, 11 JUN 2026 to 09 JUL 2026