

# HI-TACAN Y RWY 10

TACAN NGU Chan <b>86Y</b>	APCH CRS <b>097°</b>	Rwy Idg <b>8071</b> TDZE <b>14</b> Arpt Elev <b>15</b>
------------------------------	-------------------------	--

[USN]

NORFOLK NS (CHAMBERS FLD) (KNGU)

RNAV or RADAR required.

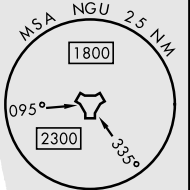
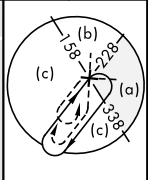
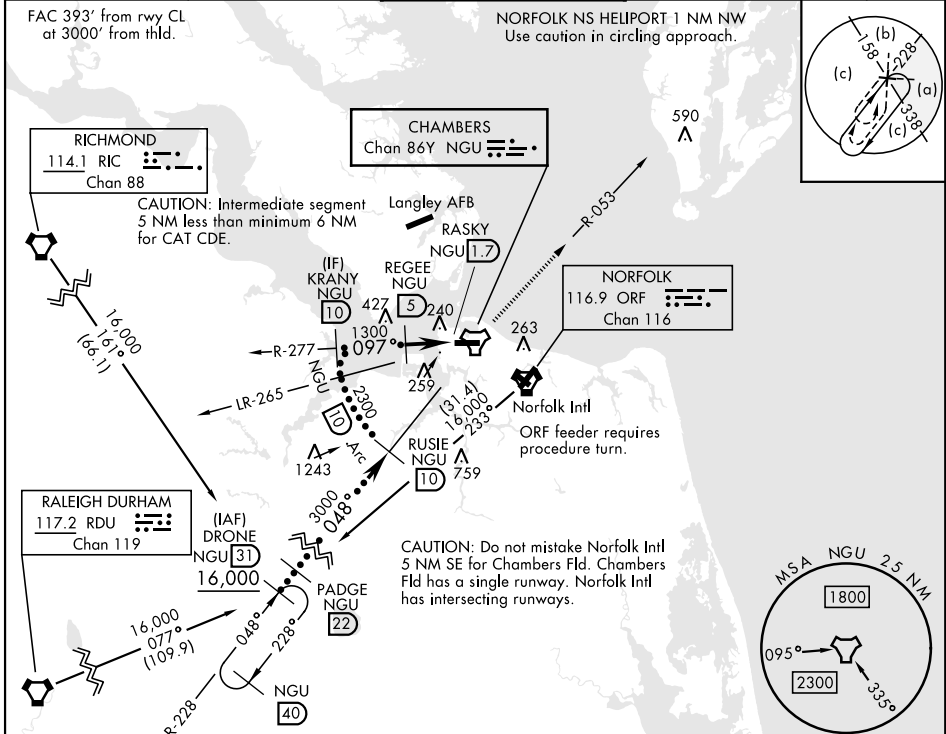
ALSF-2

MISSED APPROACH: Climb left turn to 2300 via NGU TACAN R-053 then as directed by ATC.

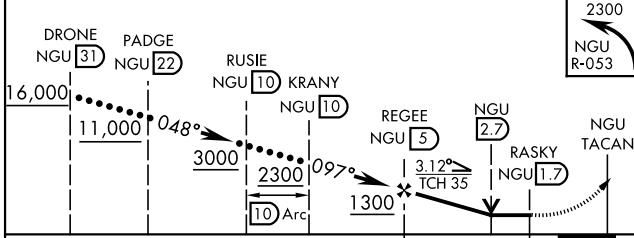
\* When ALS inop, increase CAT CDE vis to 1½ miles.  
\*\* Circling not authorized S of Rwy 10-28.



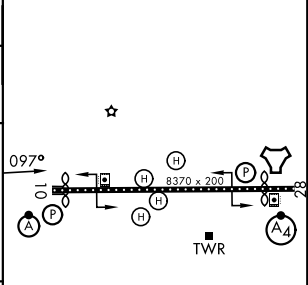
ATIS <b>118.425 338.225</b>	APP CON <b>118.9 273.475</b>	CHAMBERS TOWER <b>124.3 379.15</b>	GND CON <b>121.8 370.85</b>	ASR/PAR
--------------------------------	---------------------------------	---------------------------------------	--------------------------------	---------



EMERG SAFE ALT 100 NM 6100



ELEV	15	TDZE	14
------	----	------	----



CATEGORY	C	D	E
S-10*	520-1	506	(600-1)
CIRCLING**	540-1½ 525 (600-1½)	600-2	585 (600-2)

HIRL Rwy 10-28  
REIL Rwy 10, 28  
TDZL/RCLS Rwy 10-28

# HI-TACAN Y RWY 10

NE-3, 11 JUN 2026 to 09 JUL 2026

NE-3, 11 JUN 2026 to 09 JUL 2026