

# RNAV (GPS) RWY 10

WAAS Chan <b>44826</b> <b>W10A</b>	APCH CRS <b>100°</b>	Rwy Idg <b>8071</b> TDZE <b>14</b> Arpt Elev <b>15</b>
------------------------------------------	-------------------------	--------------------------------------------------------------

[USN]

NORFOLK NS (CHAMBERS FLD) (KNGU)

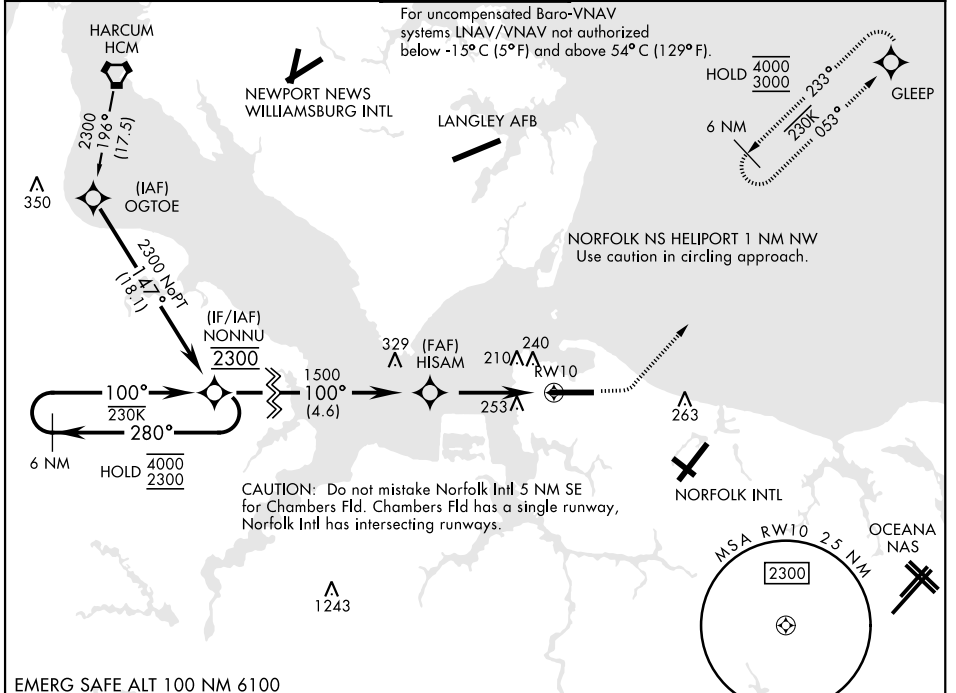
RNP APCH - GPS

- ▼ \*When ALS inop, increase vis to ¾ mile.
- \*\*When ALS inop, increase vis to 1¾ miles.
- \*\*\*When ALS inop, increase CAT AB vis to 1 mile, CAT CDE vis to 1¾ miles.
- \*\*\*\*Circling not authorized S of Rwy 10-28.



MISSED APPROACH: Climb to 800 then climbing left turn to 3000 direct GLEEP and hold.

ATIS <b>118.425 338.225</b>	APP CON <b>118.9 273.475</b>	CHAMBERS TOWER <b>124.3 379.15</b>	GND CON <b>121.8 370.85</b>	ASR/PAR
--------------------------------	---------------------------------	---------------------------------------	--------------------------------	---------



NE-3, 11 JUN 2026 to 09 JUL 2026

NE-3, 11 JUN 2026 to 09 JUL 2026

EMERG SAFE ALT 100 NM 6100

VGSI and RNAV glidepath not coincident (VGSI Angle 3.00/TCH 35).		800	3000	GLEEP	ELEV 15	TDZE 14
6 NM Holding Pattern 4000 ← 280° 2300 → 100° GP 3.00° TCH 50		HISAM 1500 1.5 NM to RW10 RW10			MSA RW10 2.5 NM 2300 OCEANA NAS	
CATEGORY	A	B	C	D	E	
LPV DA *	214-½		200	(200-½)		
LNAV/VNAV DA **	520-1		506	(600-1)		
LNAV MDA ***	520-½ 506 (600-½)		520-1	506	(600-1)	
CIRCLING ****	520-1	540-1	540-1½	600-2	585	(600-2)
						HIRL Rwy 10-28 REIL Rwy 10, 28 TDZL/RCLS Rwy 10-28

# RNAV (GPS) RWY 10