

NUTY ONE DEPARTURE (RNAV) Departure Routes

NORFOLK DEP CON 125.2 363.125 ATIS 127.15 CLNC DEL 118.5 GND CON 121.9 NORFOLK TOWER 120.8 257.8	RNAV1 DME/DME/IRU or GPS. RADAR required.	TOP ALTITUDE: 4000
---	--	-------------------------------

TAKEOFF MINIMUMS:
Rwys 5, 14, 23, 32: Standard.

NOTE: HCM Transition for turboprops and props only.
NOTE: Do not file THHMP Transition - to be assigned by ATC.

(CONTINUED ON FOLLOWING PAGE) NOTE: Chart not to scale.



DEPARTURE ROUTE DESCRIPTION

- TAKEOFF RUNWAY 5: Climb on heading 047° to 526, then on heading 047°, for RADAR vectors to cross SCTYP at or above 2000, thence....
- TAKEOFF RUNWAY 14: Climb on heading 137° to 526, then on heading 137°, for RADAR vectors to cross SCTYP at or above 2000, thence....
- TAKEOFF RUNWAY 23: Climb on heading 227° to 526, then on heading 227°, for RADAR vectors to cross SCTYP at or above 2000, thence....
- TAKEOFF RUNWAY 32: Climb on heading 317° to 526, then on heading 317°, for RADAR vectors to cross SCTYP at or above 2000, thence....

....on track 279° to NUTYI, then on assigned transition. Maintain 4000, expect filed altitude 10 minutes after departure.

- EYOBI TRANSITION (NUTY1 .EYOBI)
- HARCUM TRANSITION (NUTY1 .HCM)
- HYTRA TRANSITION (NUTY1 .HYTRA)
- KELLE TRANSITION (NUTY1 .KELLE)
- PBCUP TRANSITION (NUTY1 .PBCUP)
- RALEIGH/DURHAM TRANSITION (NUTY1 .RDU)
- SHLBK TRANSITION (NUTY1 .SHLBK)
- THHMP TRANSITION (NUTY1 .THHMP)

NE-3, 11 JUN 2026 to 09 JUL 2026

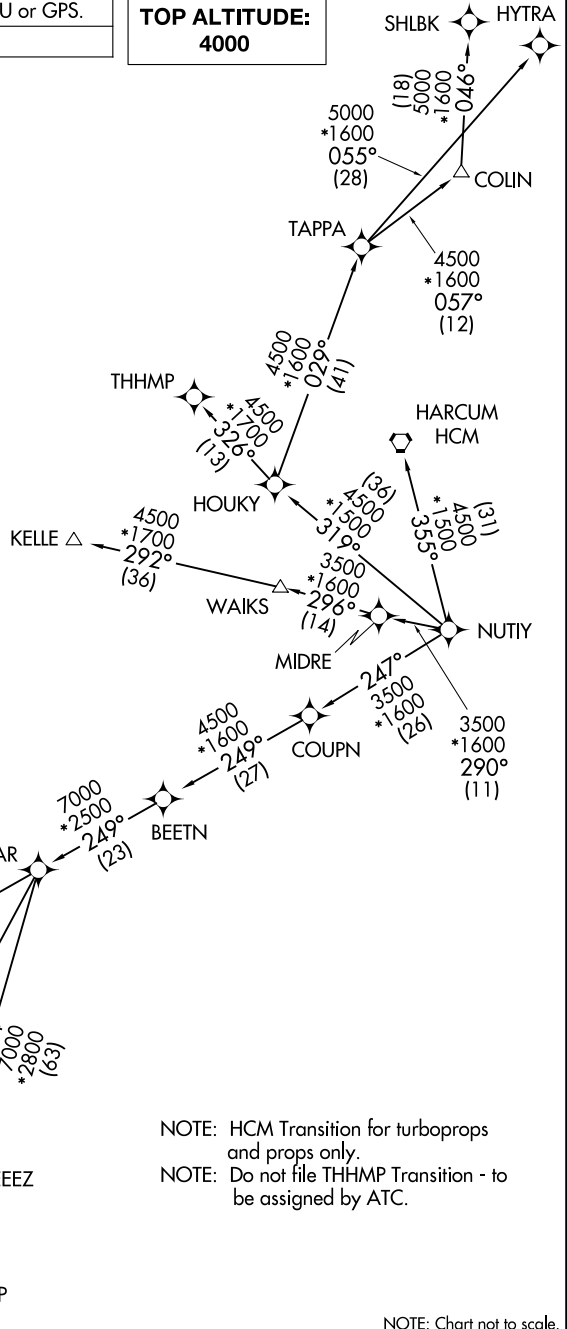
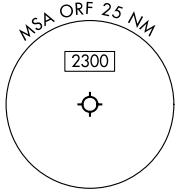
NE-3, 11 JUN 2026 to 09 JUL 2026

NUTY ONE DEPARTURE (RNAV) Transition Routes

NORFOLK DEP CON
125.2 363.125
ATIS
127.15
CLNC DEL
118.5
GND CON
121.9
NORFOLK TOWER
120.8 257.8

RNAV1 DME/DME/IRU or GPS.
RADAR required.

**TOP ALTITUDE:
4000**



NOTE: HCM Transition for turboprops and props only.
NOTE: Do not file THHMP Transition - to be assigned by ATC.

NOTE: Chart not to scale.

NE-3, 11 JUN 2026 to 09 JUL 2026

NE-3, 11 JUN 2026 to 09 JUL 2026

NUTY ONE DEPARTURE (RNAV) Transition Routes