

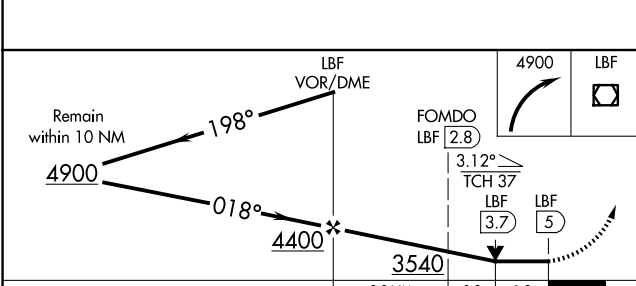
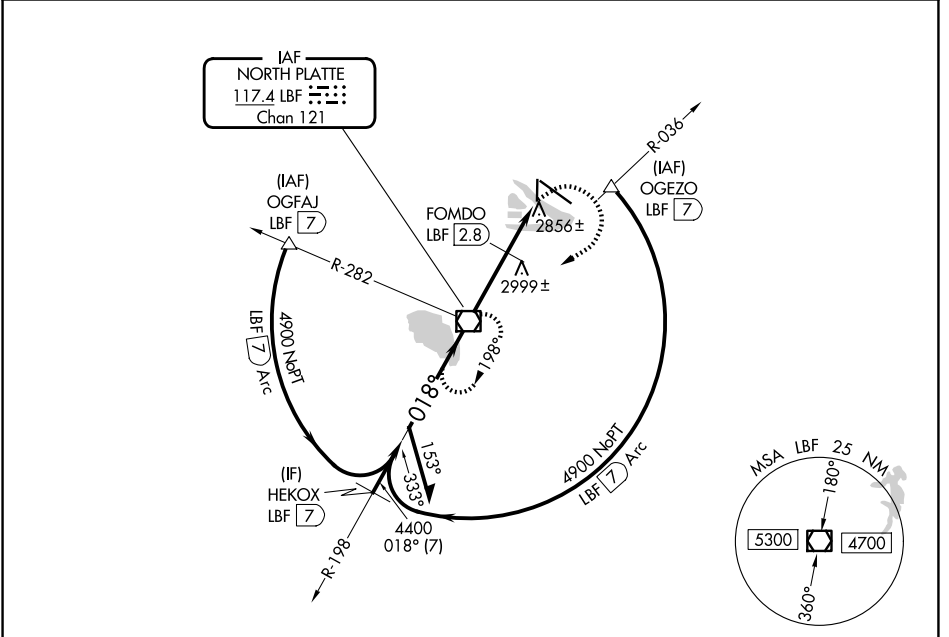
VOR/DME LBF <b>117.4</b> Chan <b>121</b>	APP CRS <b>018°</b>	Rwy Ldg <b>4135</b> TDZE <b>2777</b> Apt Elev <b>2777</b>
--	------------------------	---

# VOR RWY 35

NORTH PLATTE RGNL/LEE BIRD FLD (LBF)

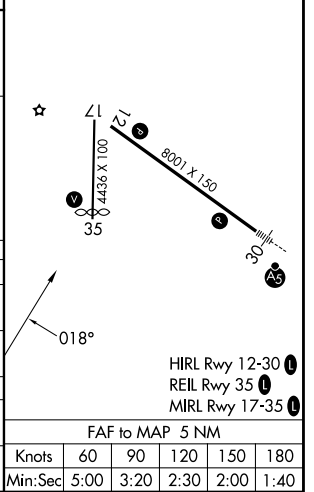
**⚠** Rwy 35 helicopter visibility reduction below ¾ SM NA. **MISSED APPROACH:** Climbing right turn to 4900 direct LBF VOR/DME and hold, continue climb-in-hold to 4900.

ASOS <b>118.425</b>	DENVER CENTER <b>132.7 226.675</b>	UNICOM <b>123.0 (CTAF)</b>
------------------------	---------------------------------------	-------------------------------



ELEV 2777 **D** TDZE 2777

CATEGORY	A	B	C	D
S-35	3540-1 763 (800-1)	3540-1¼ 763 (800-1¼)	3540-2¼ 763 (800-2¼)	3540-2½ 763 (800-2½)
CIRCLING	3540-1 763 (800-1)	3540-1¼ 763 (800-1¼)	3540-2¼ 763 (800-2¼)	3560-2½ 783 (800-2½)
FOMDO FIX MINIMUMS				
S-35	3220-1	443 (500-1)	3220-1¼ 443 (500-1¼)	3220-1½ 443 (500-1½)
CIRCLING	3280-1 503 (600-1)	3340-1 563 (600-1)	3420-1¾ 643 (700-1¾)	3560-2½ 783 (800-2½)



NC-2, 11 JUN 2026 to 09 JUL 2026

NC-2, 11 JUN 2026 to 09 JUL 2026