

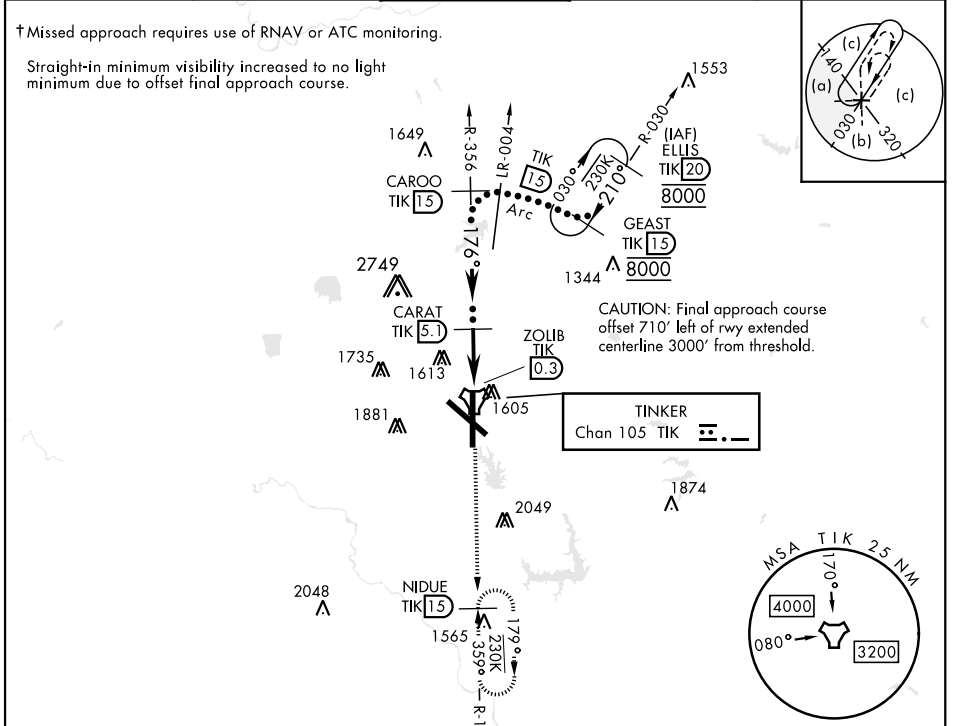
HI-TACAN Y RWY 18

TACAN TIK Chan 105	APCH CRS 176°	Rwy Idg 11,100 TDZE 1267 Arprt Elev 1291	[USAF]	TINKER AFB (KTIK)
------------------------------	-------------------------	---	--------	-------------------

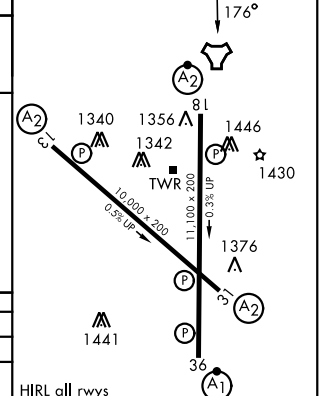
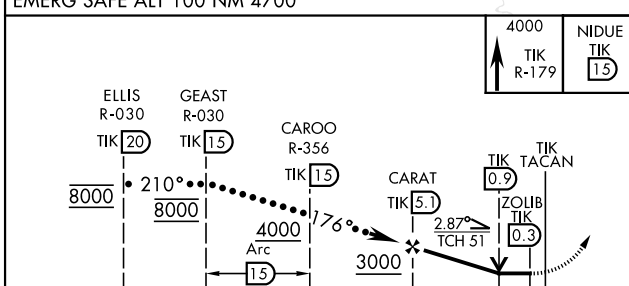
A₂ SALSF A₂ † MISSED APPROACH: Climb to 4000 on TIK TACAN R-179 to NIDUE and hold.

▽ * CAT E circling not authorized in sector S of Rwy 13-31. Circling not authorized to Rwy 18.

ATIS★ 270.1	OKE CITY APP CON 124.2 336.4	TOWER 124.45 251.05	GND CON 121.8 275.8	ASR
-----------------------	--	-------------------------------	-------------------------------	-----



EMERG SAFE ALT 100 NM 4700	ELEV 1291	TDZE 1267
----------------------------	-----------	-----------



CATEGORY	C	D	E
S-18	1720-1 $\frac{3}{8}$	453	(500-1 $\frac{3}{8}$)
CIRCLING*	1960-1 $\frac{3}{4}$ 669 (700-1 $\frac{3}{4}$)	1960-2 669 (700-2)	1960-2 $\frac{1}{4}$ 669 (700-2 $\frac{1}{4}$)

HIRL all rwys

HI-TACAN Y RWY 18



SC-1, 11 JUN 2026 to 09 JUL 2026

SC-1, 11 JUN 2026 to 09 JUL 2026