

OKLAHOMA CITY, OKLAHOMA

LOC/DME RWY 31

LOC I-PLH 111.7	APCH CRS 308°	Rwy ldg 10,000 TDZE 1276 Arprt Elev 1291	[USAF]	TINKER AFB (KTIK)
---------------------------	-------------------------	---	--------	-------------------

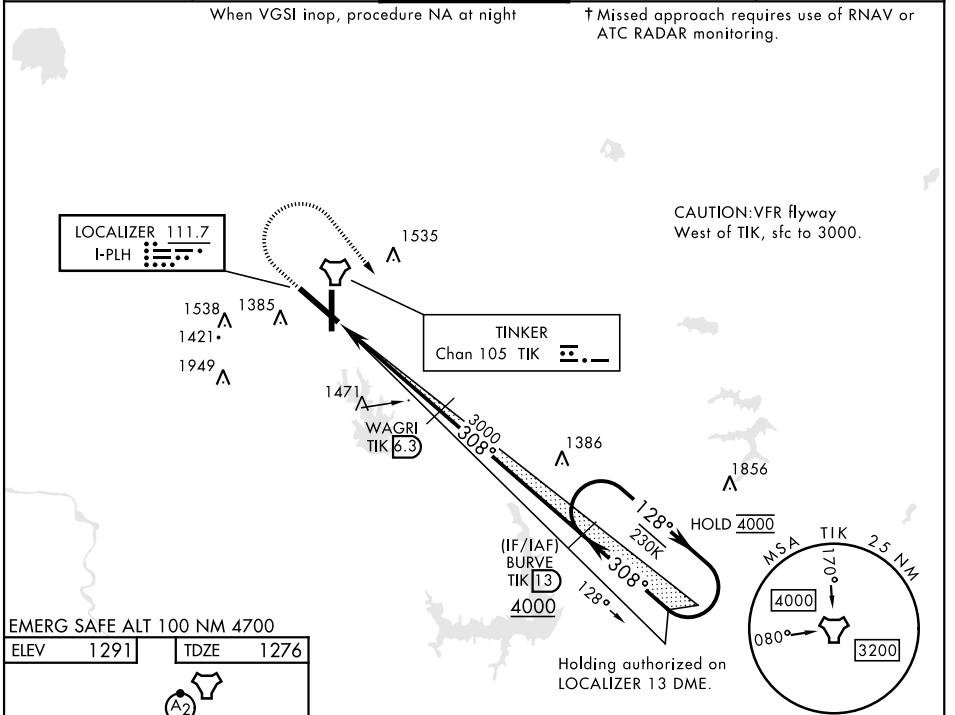
RADAR required	SALS (A2)	† MISSED APPROACH: Climb straight ahead to 2500, then turn right to 4000 direct I-PLH and TIK 13 DME (BURVE) and hold.
----------------	---------------------	--

*When ALS inop, increase CAT AB RVR to 55 and vis to 1 mile, CAT CDE vis to 1/8.
**CAT E Circling not authorized in sector S of Rwy 13-31 and W of Rwy 18-36.

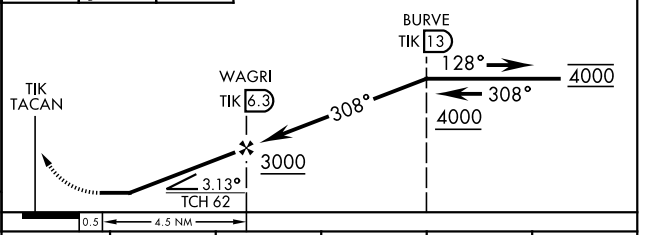
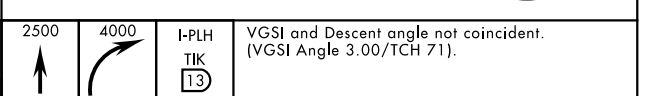
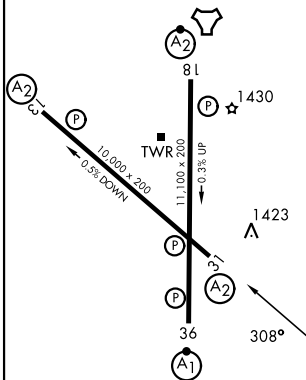
ATIS★ 270.1	OKE CITY APP CON 124.2 336.4	TOWER 124.45 251.05	GND CON 121.8 275.8	ASR
-----------------------	--	-------------------------------	-------------------------------	-----

When VGSI inop, procedure NA at night

† Missed approach requires use of RNAV or ATC RADAR monitoring.



EMERG SAFE ALT 100 NM 4700
ELEV 1291 TDZE 1276



HIRL all rws	FAF to MAP 4.5 NM				
Knots	60	90	120	150	180
Min:Sec	4:30	3:00	2:15	1:48	1:30
CATEGORY	A	B	C	D	E
S-LOC 31*	1740/50 464 (500-1)	1740/60 464 (500-1½)			
CIRCLING**	1840-1 549 (600-1)	1960-1½ 669 (700-1¾)	1980-2¼ 689 (700-2¼)	1960-2¼ 669 (700-2¼)	

OKLAHOMA CITY, OKLAHOMA

35°25'N-97°23'W

TINKER AFB (KTIK)

Amdt 1 13JUN24

LOC/DME RWY 31

SC-1, 11 JUN 2026 to 09 JUL 2026

SC-1, 11 JUN 2026 to 09 JUL 2026