

OKLAHOMA CITY, OKLAHOMA

# RNAV (GPS) RWY 18

APCH CRS	Rwy Idg	11,100
176°	THRE	1260
	Arprt Elev	1291

(USAF)

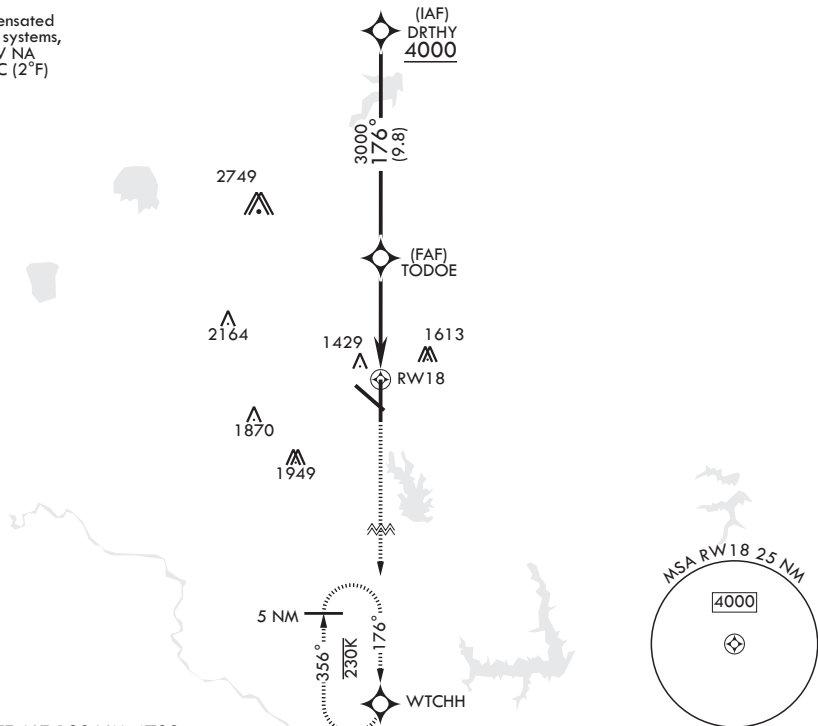
TINKER AFB (KTIK)

**⚠** \* Cat E Circling not authorized in sector S of Rwy 13-31 and W of Rwy 18-36. **SALSF** MISSED APPROACH: Climb to 4000 direct WTCHH waypoint and hold.

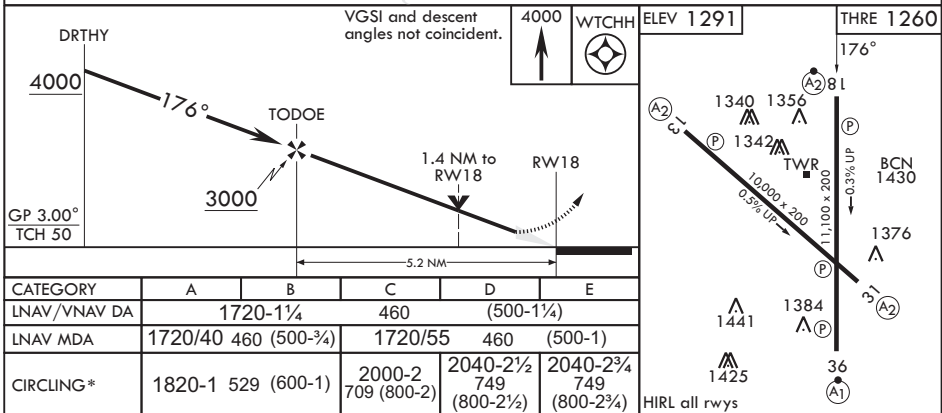
ATIS*	OKE CITY APP CON/DEP CON	TOWER	GND CON	ASR
270.1	124.2 336.4	124.45 251.05	121.8 275.8	

DME/DME RNP-0.3 NA

For uncompensated Baro-VNAV systems, LNAV/VNAV NA below -17°C (2°F)



EMERG SAFE ALT 100 NM 4700



OKLAHOMA CITY, OKLAHOMA

35°25'N - 97°23'W

TINKER AFB (KTIK)

Orig 13JUN24

# RNAV (GPS) RWY 18

SC-1, 11 JUN 2026 to 09 JUL 2026

SC-1, 11 JUN 2026 to 09 JUL 2026