

OKLAHOMA CITY, OKLAHOMA

TACAN Z RWY 18

TACAN TIK Chan 105	APCH CRS 176°	Rwy ldg 11,100 TDZE 1267 Arprt Elev 1291
------------------------------	-------------------------	---

[USAF]

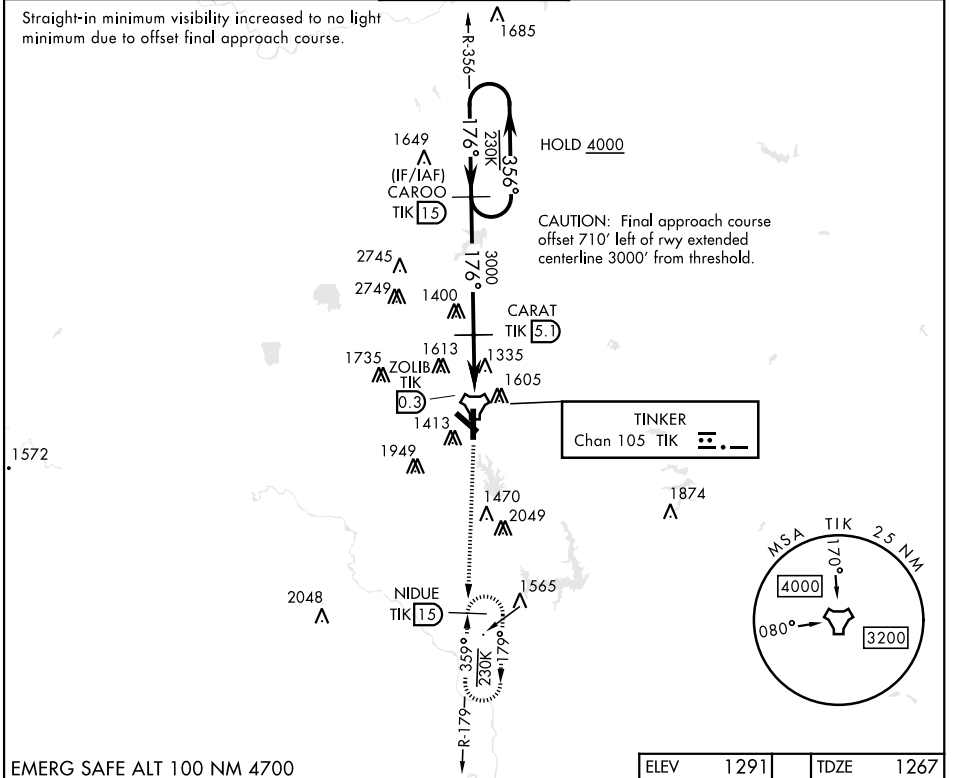
TINKER AFB (KTIK)

▼ * CAT E Circling NA in sector S of Rwy 13-31 and W of Rwy 18-36. Circling NA to Rwy 18.

SALSF  MISSED APPROACH: Climb to 4000 on TIK TACAN R-179 to NIDUE and hold. Missed approach requires use of RNAV or ATC monitoring.

ATIS★ 270.1	OKE CITY APP CON 124.2 336.4	TOWER 124.45 251.05	GND CON 121.8 275.8	ASR
-----------------------	--	-------------------------------	-------------------------------	-----

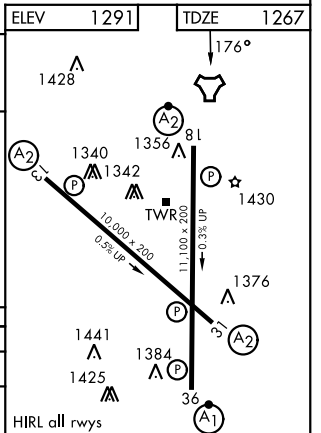
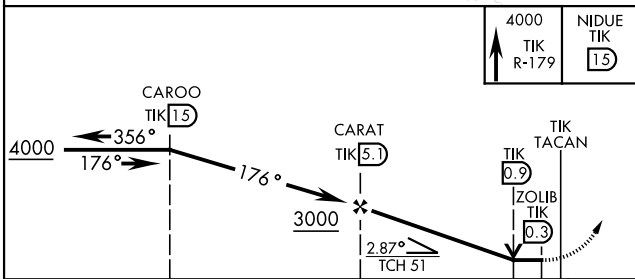
Straight-in minimum visibility increased to no light minimum due to offset final approach course.



SC-1, 11 JUN 2026 to 09 JUL 2026

SC-1, 11 JUN 2026 to 09 JUL 2026

EMERG SAFE ALT 100 NM 4700



CATEGORY	A	B	C	D	E
S-18	1720/55	453 (500-1)	1720-1½	453	(500-1½)
CIRCLING*	1820-1 529 (600-1)	1840-1 549 (600-1)	1960-1¾ 669 (700-1¾)	1960-2 669 (700-2)	1960-2¼ 669 (700-2¼)

OKLAHOMA CITY, OKLAHOMA

35°25'N-97°23'W

TINKER AFB (KTIK)

Amdt 5 20APR23

TACAN Z RWY 18