

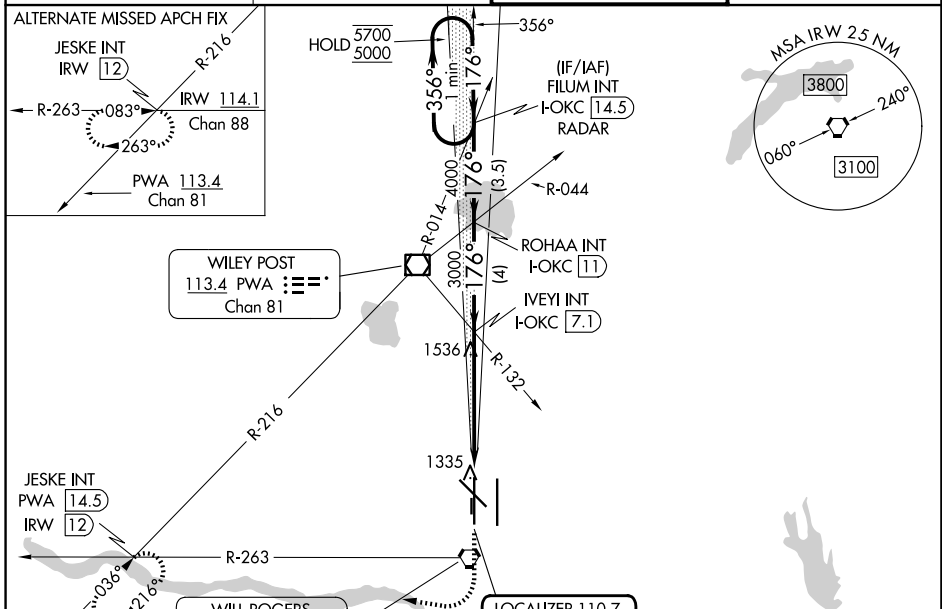
LOC/DME I-OKC 110.7 Chan 44	APP CRS 176°	Rwy Ldg TDZE 9800 1282	Apt Elev 1296
--	------------------------	--	-------------------------

ILS RWY 17R (SA CAT II)

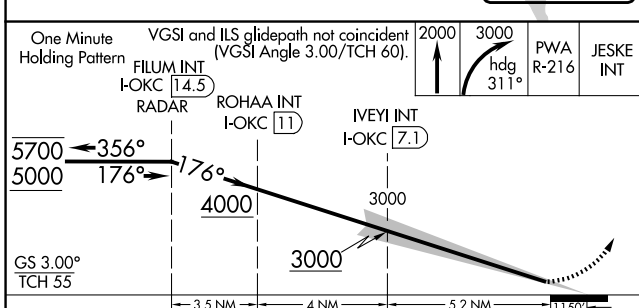
OKC WILL ROGERS INTL (OKC)

RADAR required for procedure entry.		MALSR	MISSED APPROACH: Climb to 2000 then climbing right turn to 3000 on heading 311° and on PWA VOR/DME R-216 to JESKE INT/PWA 14.5 DME and hold.
⚠ Simultaneous approach authorized. Reduced lighting: requires specific OPSPEC, MSPEC, or LOA approval and use of autoland or HUD to touchdown.			

D-ATIS 125.85	OKE CITY APP CON 124.6 266.8	ROGERS TOWER 119.35 269.45	GND CON 121.9 348.6
-------------------------	--	--------------------------------------	-------------------------------

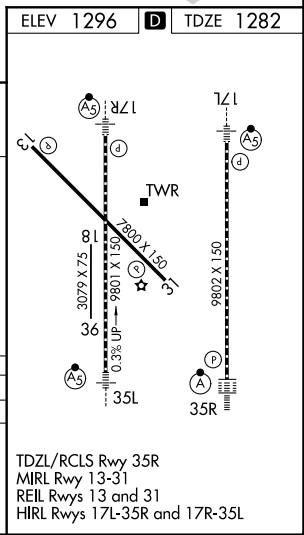


ELEV 1296	TDZE 1282
-----------	-----------



CATEGORY	A	B	C	D
5-ILS 17R	RA 102/12 100 DA 1382			

SA CATEGORY II ILS - SPECIAL AIRCREW & AIRCRAFT CERTIFICATION REQUIRED



TDZL/RCLS Rwy 35R
MIRL Rwy 13-31
REIL Rwys 13 and 31
HIRL Rwys 17L-35R and 17R-35L

SC-1, 11 JUN 2026 to 09 JUL 2026

SC-1, 11 JUN 2026 to 09 JUL 2026