

LOC/DME I-OKC 110.7 Chan 44	APP CRS 176°	Rwy Ldg 9800 TDZE 1282 Apt Elev 1296
--	------------------------	---

ILS or LOC RWY 17R

OKC WILL ROGERS INTL (OKC)

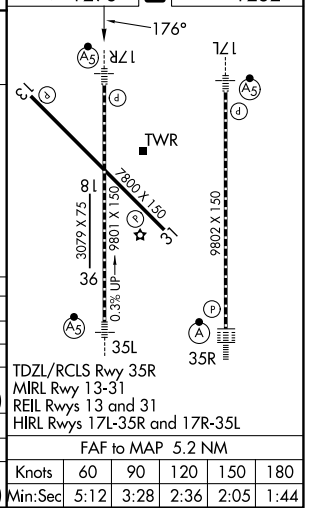
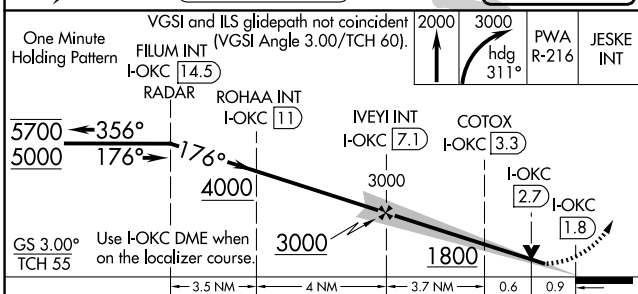
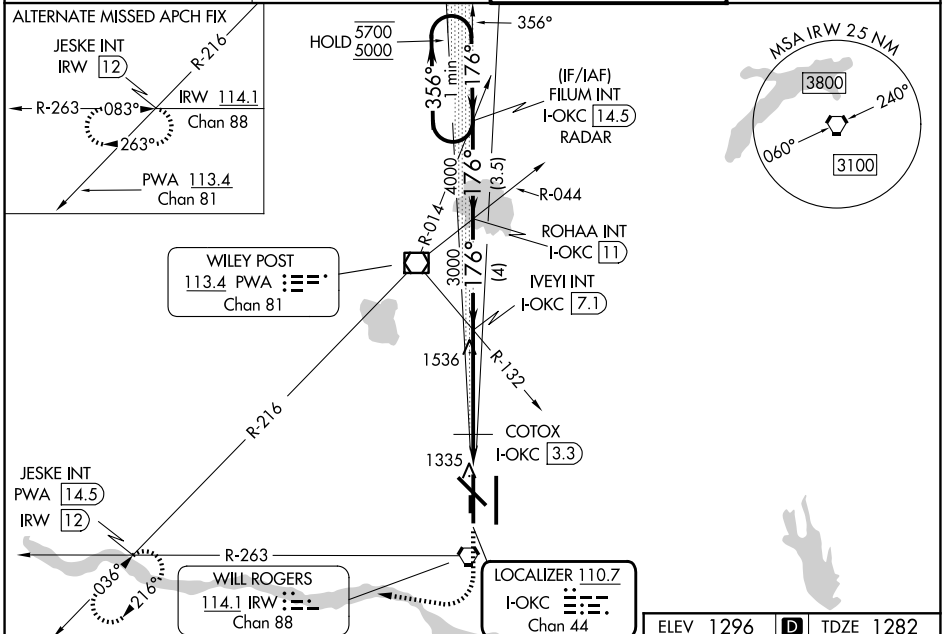
RADAR required for procedure entry.

Simultaneous approach authorized. For inop ALS, increase S-ILS 17R Cat E visibility to RVR 4000; increase S-LOC 17R Cats C, D and E visibilities to 1 $\frac{3}{8}$ SM.
* RVR 1800 authorized with use of FD or AP or HUD to DA.

MALSR

MISSED APPROACH: Climb to 2000 then climbing right turn to 3000 on heading 311° and on PWA VOR/DME R-216 to JESKE INT/PWA 14.5 DME and hold.

D-ATIS 125.85	OKE CITY APP CON 124.6 266.8	ROGERS TOWER 119.35 269.45	GND CON 121.9 348.6
-------------------------	--	--------------------------------------	-------------------------------



CATEGORY	A	B	C	D	E
S-ILS 17R*	1482/24 200 (200- $\frac{1}{2}$)				
S-LOC 17R	1800/24	518 (600- $\frac{1}{2}$)	1800/55 518 (600-1)		
CIRCLING	1800-1	504 (600-1)	1960-1 $\frac{3}{4}$	2000-2 $\frac{1}{4}$	2240-3
			664 (700-1 $\frac{3}{4}$)	704 (800-2 $\frac{1}{4}$)	944 (1000-3)
COTOX FIX MINIMUMS					
S-LOC 17R	1620/24	338 (400- $\frac{1}{2}$)	1620/26	338 (400- $\frac{1}{2}$)	
CIRCLING	1740-1	1760-1	1960-1 $\frac{3}{4}$	2000-2 $\frac{1}{4}$	2240-3
	444 (500-1)	464 (500-1)	664 (700-1 $\frac{3}{4}$)	704 (800-2 $\frac{1}{4}$)	944 (1000-3)

SC-1, 11 JUN 2026 to 09 JUL 2026

SC-1, 11 JUN 2026 to 09 JUL 2026