

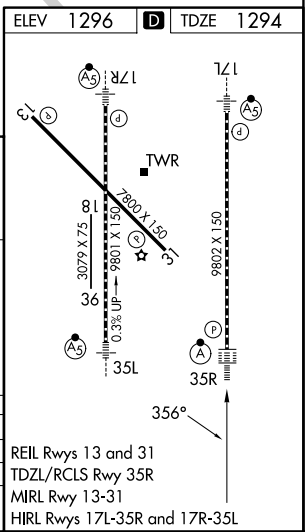
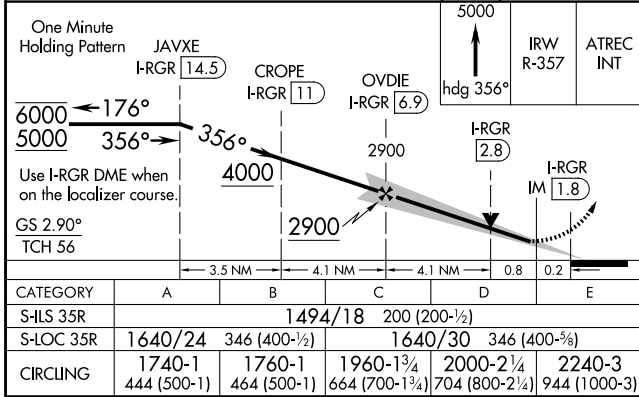
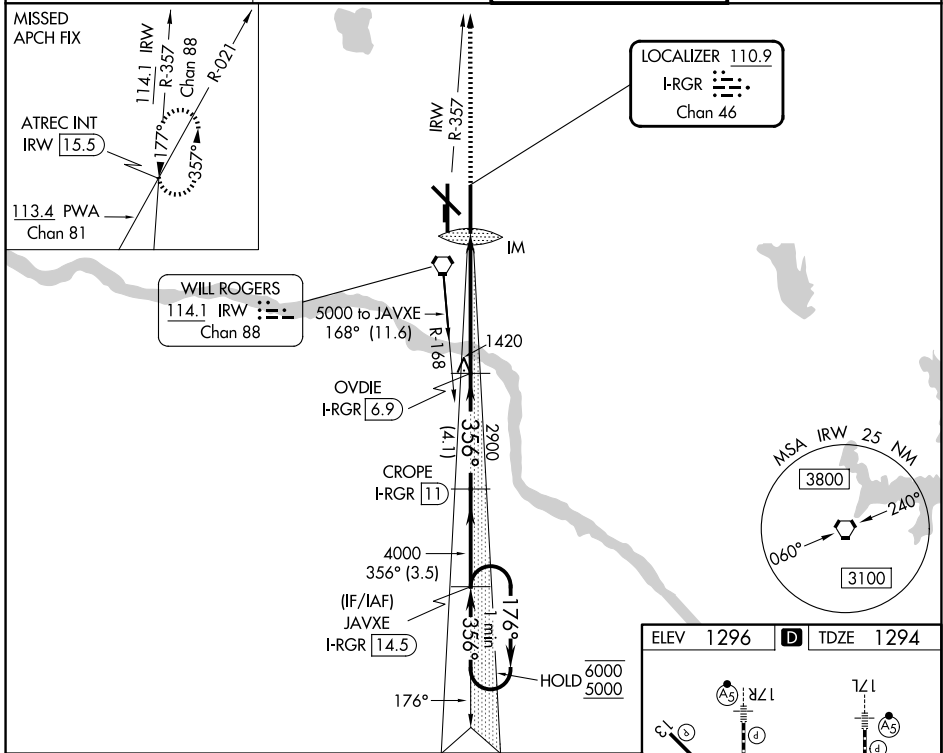
LOC/DME I-RGR 110.9 Chan 46	APP CRS 356°	Rwy Ldg 9802
		TDZE 1294
		Apt Elev 1296

I LS or LOC RWY 35R

OKC WILL ROGERS INTL (OKC)

DME required.	ALSf-2	MISSED APPROACH: Climb to 5000 on heading 356° and on IRW VORTAC R-357 to ATREC INT/IRW 15.5 DME and hold, continue climb-in-hold to 5000.
<p>Simultaneous approach authorized. For inop ALS, increase S-ILS 35R Cat E visibility to RVR 4000 and S-LOC 35R Cats C/D/E visibility to RVR 5500.</p> <p>ASR</p>		

D-ATIS 125.85	OKC CITY APP CON 124.6 266.8	ROGERS TOWER 119.35 269.45	GND CON 121.9 348.6
-------------------------	--	--------------------------------------	-------------------------------



SC-1, 11 JUN 2026 to 09 JUL 2026

SC-1, 11 JUN 2026 to 09 JUL 2026