

# RNAV (RNP) Z RWY 35L

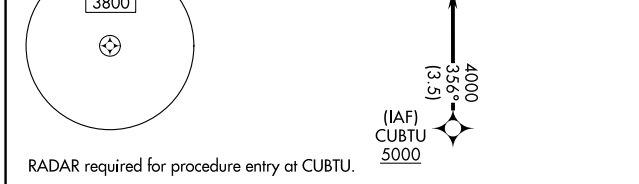
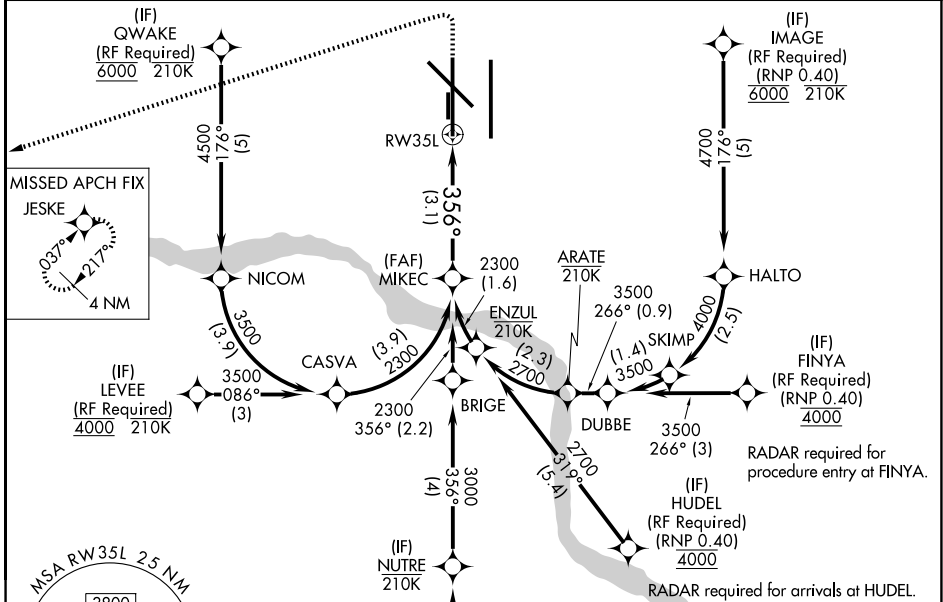
OKC WILL ROGERS INTL (OKC)

APP CRS <b>356°</b>	Rwy Ldg <b>9800</b>
	TDZE <b>1276</b>
	Apt Elev <b>1296</b>

**ASR** For uncompensated Baro-VNAV systems, procedure NA below -12°C (11°F) or above 54°C (130°F). GPS required. Simultaneous approach authorized with Rwy 35R. Use of FD or AP providing RNAV track guidance required during simultaneous operations. For inop ALS, increase RNP 0.30 all Cats visibility to 1/4 SM.

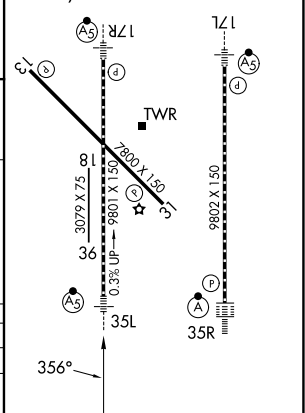
**MALSR** MISSED APPROACH: Climb to 2000 then climbing left turn to 3000 direct JESKE and hold.

D-ATIS <b>125.85</b>	OKE CITY APP CON <b>124.6 266.8</b>	ROGERS TOWER <b>119.35 269.45</b>	GND CON <b>121.9 348.6</b>
-------------------------	--	--------------------------------------	-------------------------------



ELEV 1296 **D** TDZE 1276

REIL Rwy 13 and 31  
TDZL/RCLS Rwy 35R  
MIRL Rwy 13-31  
HIRL Rwy 17L-35R and 17R-35L



MIKEC 2300	See planview for multiple IF locations.	2000	3000	JESKE
GP 3.00° TCH 49				
				RWY 35L
				3.1 NM

CATEGORY	A	B	C	D
RNP 0.30 DA		1646/38	370 (400-3/4)	

## AUTHORIZATION REQUIRED

SC-1, 11 JUN 2026 to 09 JUL 2026

SC-1, 11 JUN 2026 to 09 JUL 2026