

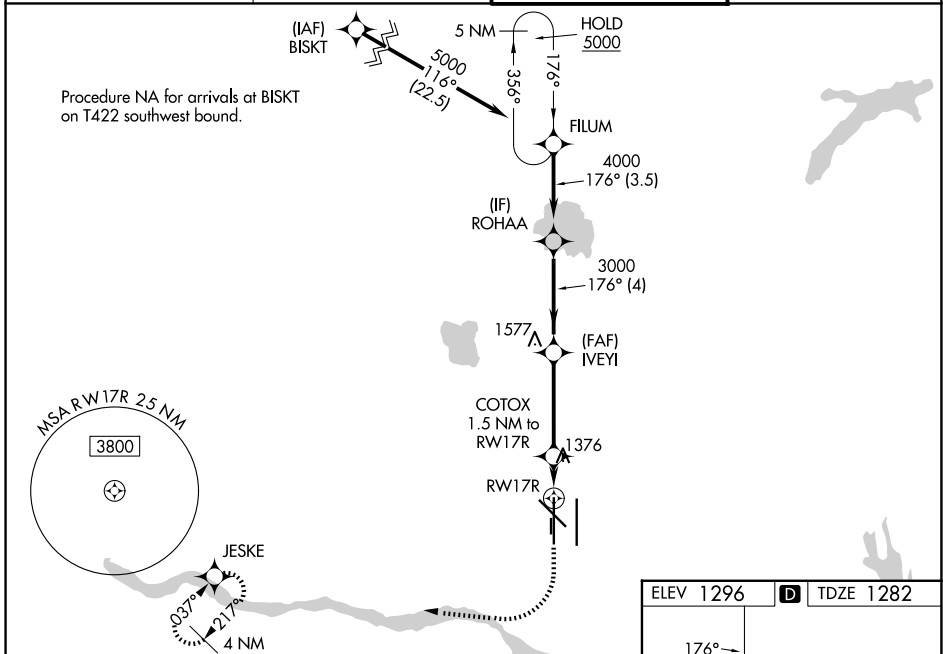
WAAS CH 50102 W17A	APP CRS 176°	Rwy Ldg TDZE Apt Elev	9800 1282 1296
--	------------------------	-----------------------------	---

RNAV (GPS) Y RWY 17R

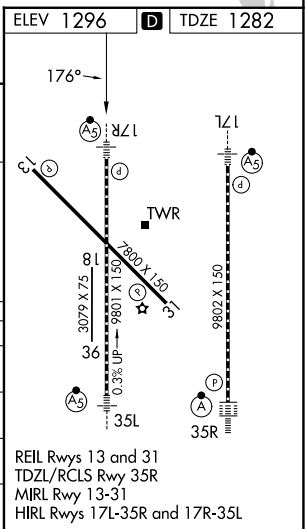
OKC WILL ROGERS INTL (OKC)

RNP APCH-GPS.	MALSR	MISSED APPROACH: Climb to 2000 then climbing right turn to 3000 direct JESKE and hold.
<p>Simultaneous approach authorized. LNAV procedure NA during simultaneous operations.</p> <p>Use of FD or AP required during simultaneous operations. For uncompensated Baro-VNAV systems, LNAV/VNAV NA below -12°C or above 54°C. For inop ALS, increase LNAV/VNAV all Cats visibility to RVR 4500, and LNAV Cats C and D visibility to RVR 5500.</p> <p>* RVR 1800 authorized with use of FD or AP or HUD to DA.</p>		

D-ATIS 125.85	OKE CITY APP CON 124.6 266.8	ROGERS TOWER 119.35 269.45	GND CON 121.9 348.6
-------------------------	--	--------------------------------------	-------------------------------



	FILUM	ROHAA	IVEYI	COTOX	JESKE
	5000	4000	3000	1800	2000
	176°	176°	176°	176°	176°
	3.5 NM	4 NM	3.7 NM	0.6 NM	0.9 NM
	VGSI and RNAV glidepath not coincident (VGSI Angle 3.00/TCH 60).				
	GP 3.00° TCH 55				
CATEGORY	A	B	C	D	
LPV DA*		1482/24	200 (200-½)		
LNAV/VNAV DA		1550/24	268 (300-½)		
LNAV MDA	1640/24	358 (400-½)	1640/30	358 (400-¾)	
CIRCLING	1740-1 444 (500-1)	1760-1 464 (500-1)	1960-1¾ 664 (700-1¾)	2000-2¼ 704 (800-2¼)	



SC-1, 11 JUN 2026 to 09 JUL 2026

SC-1, 11 JUN 2026 to 09 JUL 2026