

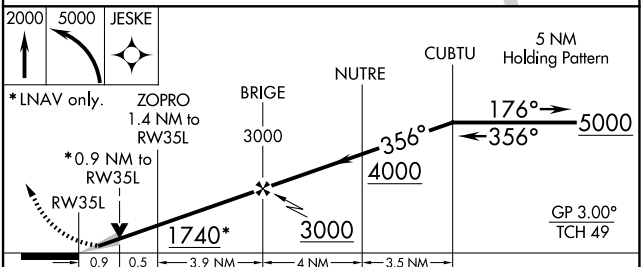
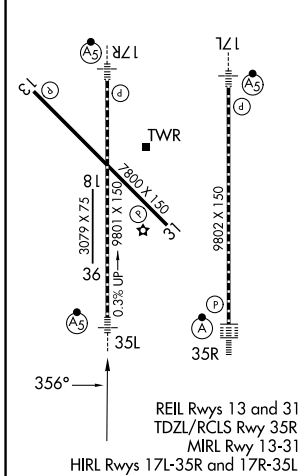
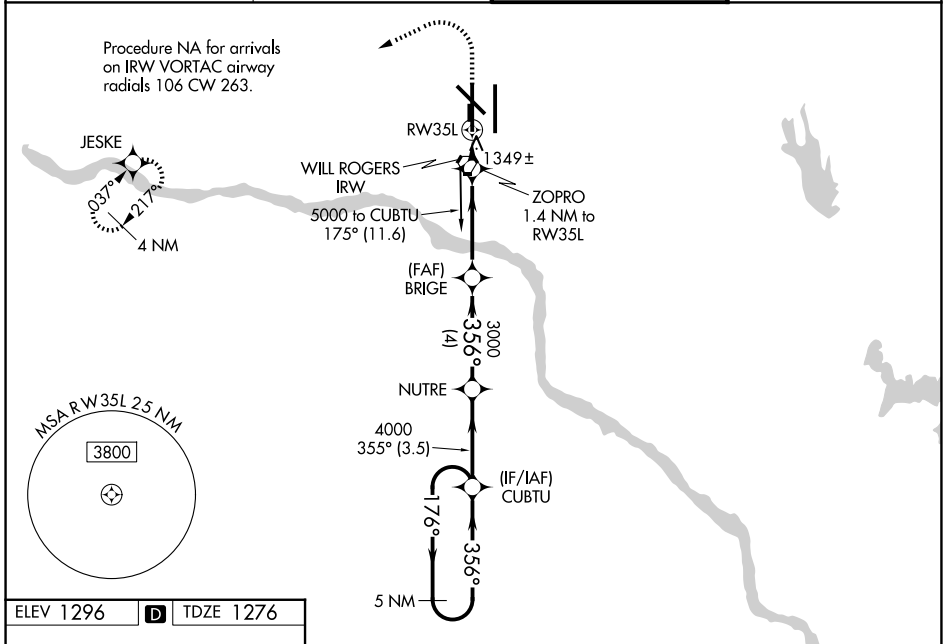
| | | |
|--|------------------------|---|
| WAAS CH 56202 W35A | APP CRS 356° | Rwy Ldg 9800 TDZE 1276 Apt Elev 1296 |
|--|------------------------|---|

RNAV (GPS) Y RWY 35L

OKC WILL ROGERS INTL (OKC)

| | | |
|---|-------|---|
| For uncompensated Baro-VNAV systems, LNAV/VNAV NA below -12°C (11°F) or above 54°C (130°F). DME/DME RNP-0.3 NA. For inop MALSR, increase LPV and LNAV/VNAV Cat E visibility to RVR 4000. Increase LNAV Cat A/B visibility to RVR 5500 and Cat C/D/E to RVR 5000. Simultaneous approach authorized with Rwy 35R. LNAV procedure NA during simultaneous operations. Use of FD or AP providing RNAV track guidance required during simultaneous operations. **RVR 1800 authorized with use of FD or AP or HUD to DA. | MALSR | MISSED APPROACH: Climb to 2000 then climbing left turn to 5000 direct JESKE and hold. |
| | | |

| | | | |
|-------------------------|--|--------------------------------------|-------------------------------|
| D-ATIS 125.85 | OKE CITY APP CON 124.6 266.8 | ROGERS TOWER 119.35 269.45 | GND CON 121.9 348.6 |
|-------------------------|--|--------------------------------------|-------------------------------|



| CATEGORY | A | B | C | D | E |
|--------------|-----------------------|-----------------------|-------------------------|-------------------------|------------------------|
| LPV DA** | | 1476/24 | 200 (200-½) | | |
| LNAV/VNAV DA | | 1543/24 | 267 (300-½) | | |
| LNAV MDA | 1600/24 | 324 (400-½) | 1600/26 | 324 (400-½) | |
| CIRCLING | 1740-1 444 (500-1) | 1760-1 464 (500-1) | 1960-1¾ 664 (700-1¾) | 2000-2¼ 704 (800-2¼) | 2240-3 944 (1000-3) |

SC-1, 11 JUN 2026 to 09 JUL 2026

SC-1, 11 JUN 2026 to 09 JUL 2026