

VOR IRW <b>114.1</b> Chan <b>88</b>	APP CRS <b>190°</b>	Rwy Ldg TDZE Apt Elev	<b>9802</b> <b>1287</b> <b>1296</b>
---	------------------------	-----------------------------	---

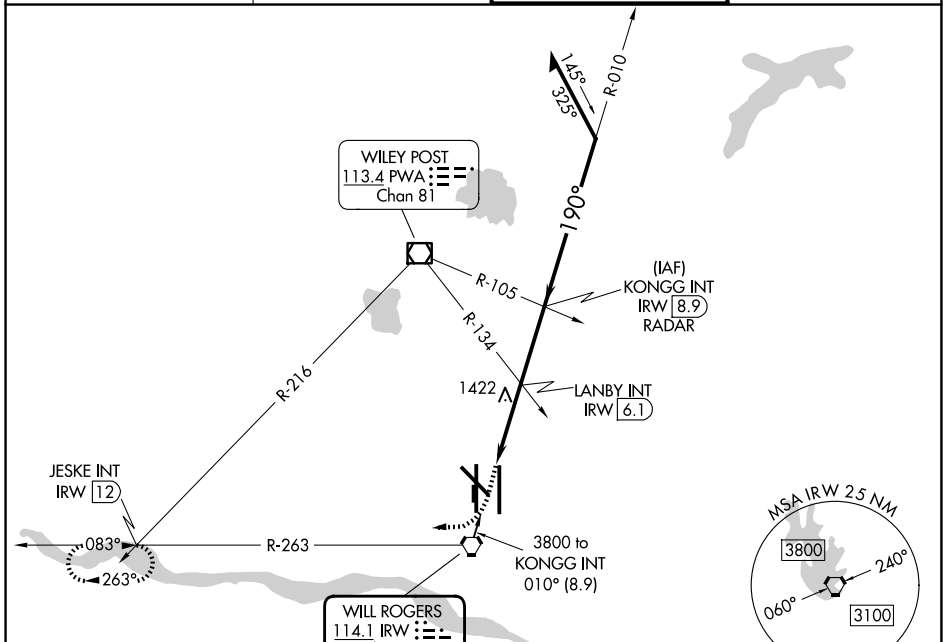
# VOR RWY 17L

OKC WILL ROGERS INTL (OKC)

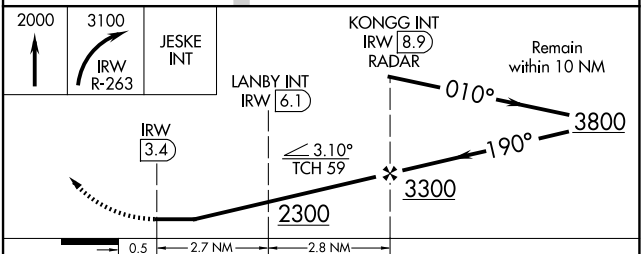
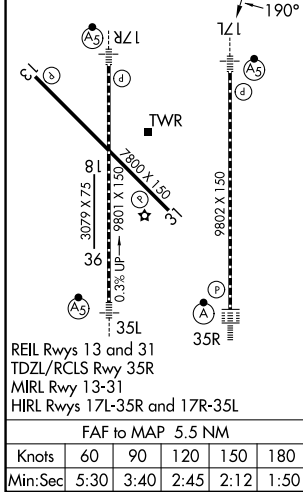
**⚠** Inop table does not apply to S-17L Cats B, C, D, and E. Cat E procedure turn NA. For inop ALS, increase LANBY Fix Minimums S-17L visibilities ASR Cats A and B to RVR 5000, and Cats C, D and E to RVR 6000.

**MALSR** MISSED APPROACH: Climb to 2000 then climbing right turn to 3100 on IRW VORTAC R-263 to JESKE INT/12 IRW DME and hold.

D-ATIS <b>125.85</b>	OKE CITY APP CON <b>124.6 266.8</b>	ROGERS TOWER <b>119.35 269.45</b>	GND CON <b>121.9 348.6</b>
-------------------------	--	--------------------------------------	-------------------------------



ELEV 1296	<b>D</b>	TDZE 1287
-----------	----------	-----------



CATEGORY	A	B	C	D	E
S-17L	2300/40 1013(1100-3/4)	2300-1 1013(1100-1)	2300-2 1/2	1013 (1100-2 1/2)	
CIRCLING	2300-1 1/4 1004(1100-1 1/4)	2300-1 1/2 1004(1100-1 1/2)	2300-3	1004 (1100-3)	
LANBY FIX MINIMUMS					
S-17L	1680/24	393 (400-1/2)	1680/40 393 (400-3/4)	1680/50 393 (400-1)	1680-1 1/2 393 (400-1 1/2)
CIRCLING	1760-1	464 (500-1)	1960-1 3/4 664 (700-1 1/4)	2000-2 1/4 704 (800-2 1/4)	2240-3 944 (1000-3)

SC-1, 11 JUN 2026 to 09 JUL 2026

SC-1, 11 JUN 2026 to 09 JUL 2026