

LOC/DME I-EXO <b>109.35</b> Chan 30(Y)	APP CRS <b>253°</b>	Rwy Ldg 6004 TDZE 113 Apt Elev 113
--	------------------------	---

# ILS or LOC RWY 25

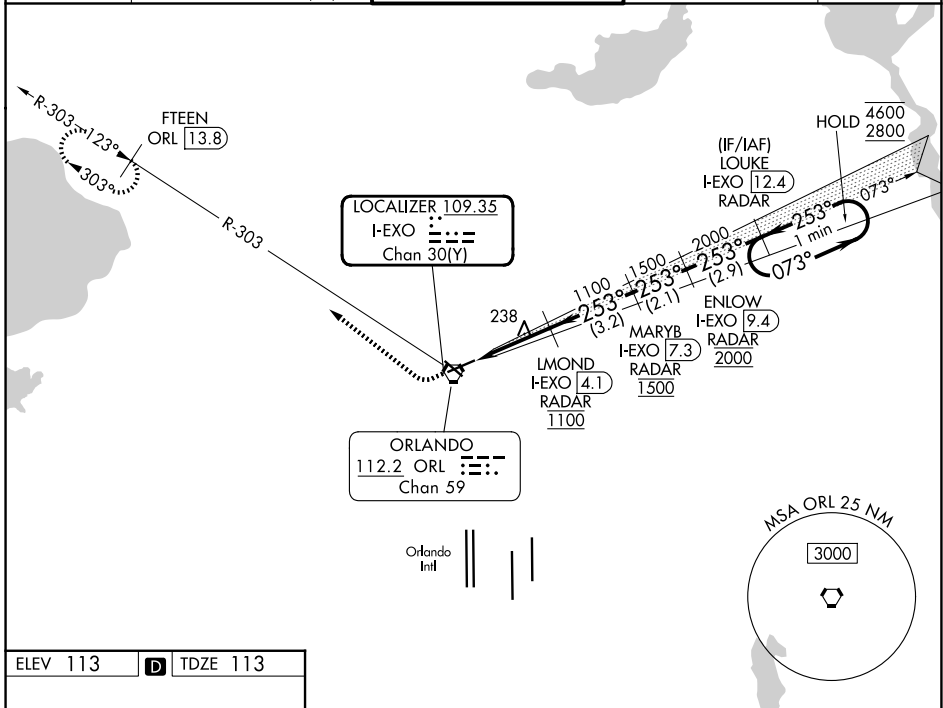
ORLANDO EXEC (ORL)

DME or RADAR required.

**⚠** Circling Rwy 31 NA at night. In minimum visibility conditions, bright lights on highway ½ mile south of airport may be mistaken for runway lights.

MISSED APPROACH: Climb to 600 then climbing right turn to 1700 on heading 315° and on ORL VORTAC R-303 to FTEEN/ORL 13.8 DME and hold.

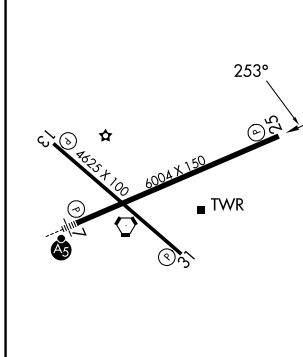
ATIS <b>127.25</b>	ORLANDO APP CON <b>119.4 351.9 (7)</b> <b>125,225 351.9 (25)</b>	EXECUTIVE TOWER ★ <b>118.7(CTAF) 0 239.0</b>	GND CON <b>121.4 239.0</b>	UNICOM <b>122.95</b>
-----------------------	--	---	-------------------------------	-------------------------



SE-3, 11 JUN 2026 to 09 JUL 2026

SE-3, 11 JUN 2026 to 09 JUL 2026

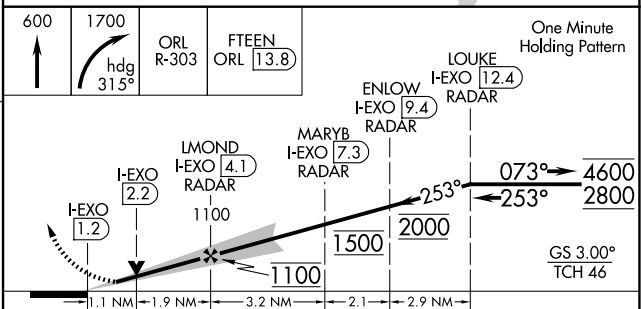
ELEV 113	<b>D</b>	TDZE 113
----------	----------	----------



REIL Rws 13 and 31 **Ⓛ**  
HIRL Rws 7-25 and 13-31 **Ⓛ**

FAF to MAP 3 NM

Knots	60	90	120	150	180
Min:Sec	3:00	2:00	1:30	1:12	1:00



CATEGORY	A	B	C	D
S-ILS 25	313-¾		200 (200-¾)	
S-LOC 25	500-1	387 (400-1)	500-1½	387 (400-1½)
CIRCLING	580-1 467 (500-1)	680-1 567 (600-1)	860-2¼ 747 (800-2¼)	860-2½ 747 (800-2½)