

VORTAC PSX <b>117.3</b> Chan <b>120</b>	APP CRS <b>120°</b>	Rwy Idg TDZE <b>13</b> Apt Elev <b>14</b>	<b>5001</b>
---	------------------------	---	-------------

# VOR RWY 13

PALACIOS MUNI (PSX)

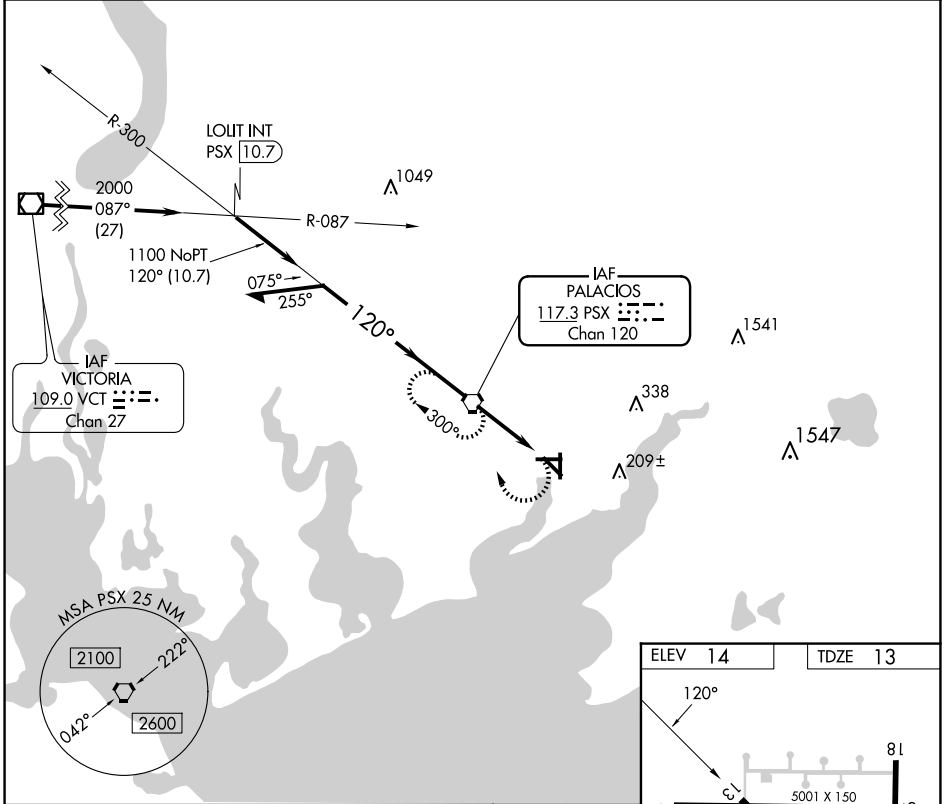
**⚠** When local altimeter setting not received, use Port Lavaca altimeter setting: increase all MDA's 60 feet and S-13 Cat C/D and Circling Cat C/D visibility ¼ SM. Rwy 13 helicopter visibility reduction below ¾ SM NA. Circling Rwy 8, 18, 26, 31, 36 NA at night.

**MISSED APPROACH:** Climbing right turn to 2000 direct PSX VORTAC and hold.

ASOS  
**118.025**

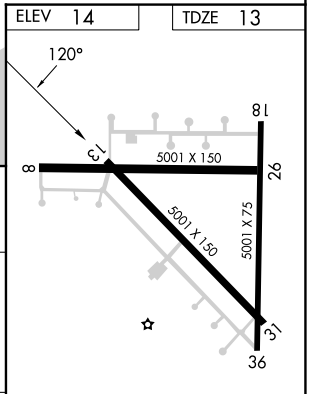
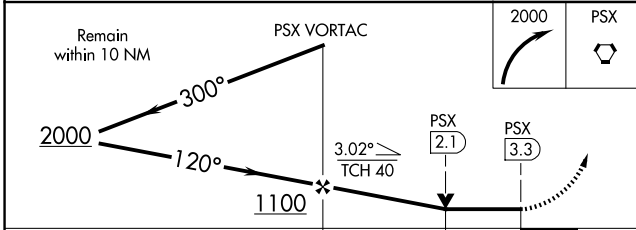
HOUSTON CENTER  
**135.05 353.6**

UNICOM  
**122.8 (CTAF) 0**



SC-5, 11 JUN 2026 to 09 JUL 2026

SC-5, 11 JUN 2026 to 09 JUL 2026



CATEGORY	A	B	C	D
S-13		380-1 367 (400-1)		380-1¼ 367 (400-1¼)
CIRCLING	460-1 446 (500-1)	480-1 466 (500-1)	560-1½ 546 (600-1½)	700-2¼ 686 (700-2¼)

ELEV	14	TDZE	13		
REIL Rwys 13 and 31	MIRL Rwy 13-31 0				
FAF to MAP 3.3 NM					
Knots	60	90	120	150	180
Min:Sec	3:18	2:12	1:39	1:19	1:06