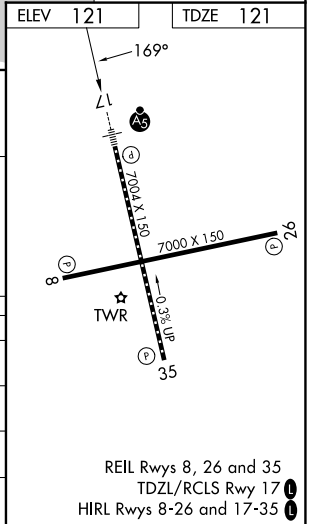
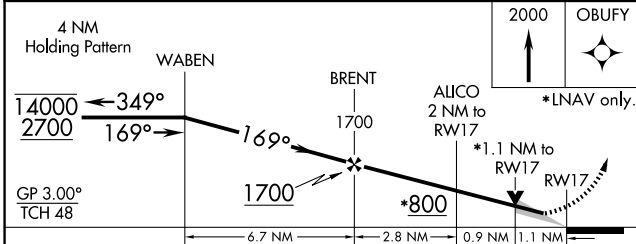
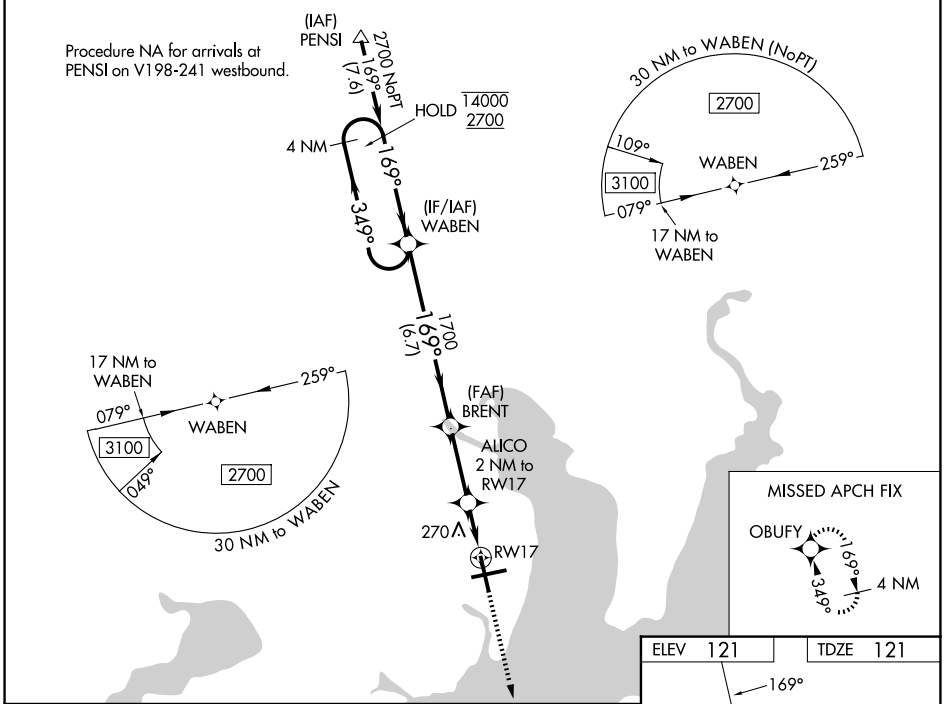


WAAS CH 97319 W17A	APP CRS 169°	Rwy Ldg TDZE Apt Elev	7004 121 121
--	------------------------	-----------------------------	---

RNAV (GPS) RWY 17

PENSACOLA INTL (PNS)

RNP APCH.		MISSED APPROACH: Climb to 2000 direct OBUFY and hold.	
ATIS 121.25	PENSACOLA APP CON 119.0 269.375	PENSACOLA TOWER ★ 119.9 (CTAF) 257.8	GND CON 121.9 348.6 UNICOM 122.95



CATEGORY	A	B	C	D
LPV DA		321/18	200 (200-½)	
LNNAV/VNAV DA		542/40	421 (500-¾)	
LNNAV MDA	520/24	399 (400-½)	520/35	399 (400-¾)
CIRCLING	580-1 459 (500-1)	680-1 559 (600-1)	860-2 739 (800-2)	860-2 ¼ 739 (800-2 ¼)

SE-3, 11 JUN 2026 to 09 JUL 2026

SE-3, 11 JUN 2026 to 09 JUL 2026