

NUN VOR <b>112.25</b>	APP CRS <b>089°</b>	Rwy Ldg 7000 TDZE 97 Apt Elev 121
--------------------------	------------------------	--

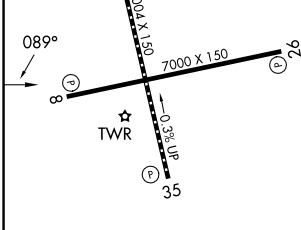
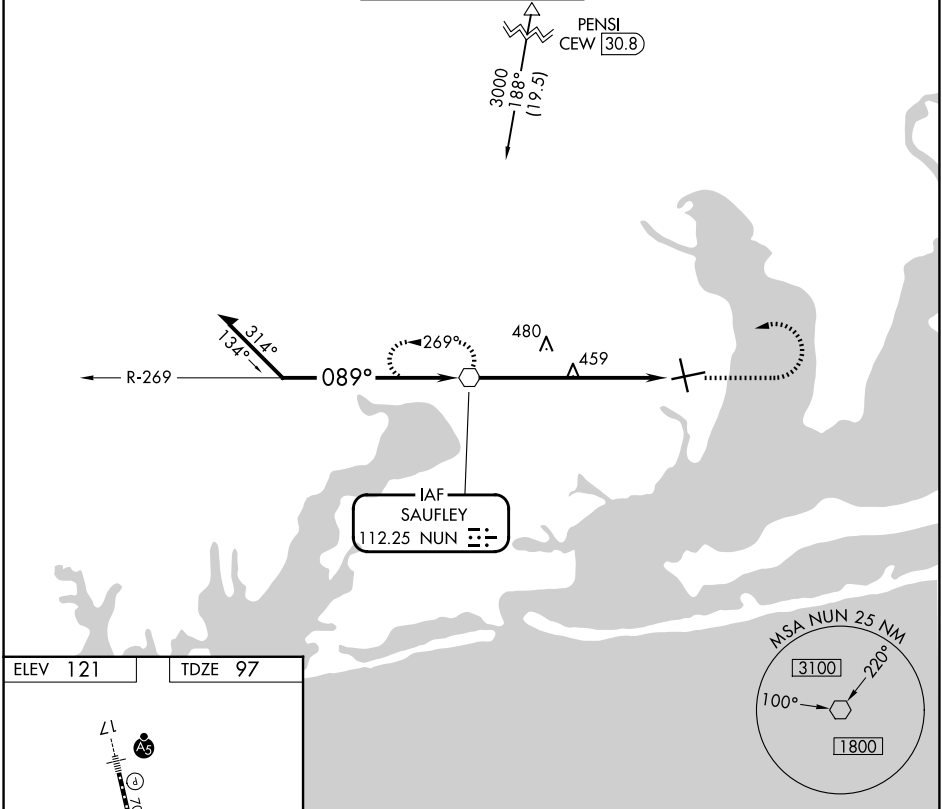
# VOR RWY 8

PENSACOLA INTL (PNS)

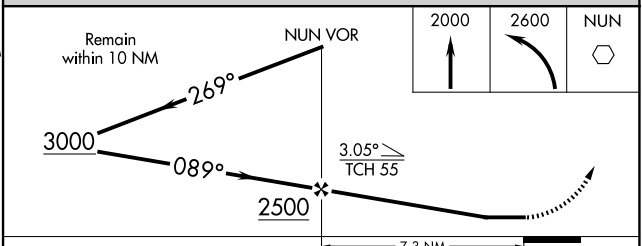
**CAUTION:** Intensive student training in vof airport.  
Rwy 8 helicopter visibility reduction below 3/4 SM NA.

**MISSED APPROACH:** Climb to 2000 then climbing left turn to 2600 direct NUN VOR and hold.

ATIS <b>121.25</b>	PENSACOLA APP CON <b>119.0 269.375</b>	PENSACOLA TOWER ★ <b>119.9 (CTAF) 257.8</b>	GND CON <b>121.9 348.6</b>	UNICOM <b>122.95</b>
-----------------------	---	--	-------------------------------	-------------------------



ELEV 121	TDZE 97
REIL Rwys 8, 26 and 35 TDZL/RCLS Rwy 17 HIRL Rwys 8-26 and 17-35	
FAF to MAP 7.3 NM	
Knots	60 90 120 150 180
Min:Sec	7:18 4:52 3:39 2:55 2:26



CATEGORY	A	B	C	D
S-8	800-1	703 (700-1)	800-2	703 (700-2)
CIRCLING	800-1	679 (700-1)	860-2 739 (800-2)	860-2 1/4 739 (800-2 1/4)

SE-3, 11 JUN 2026 to 09 JUL 2026

SE-3, 11 JUN 2026 to 09 JUL 2026