

LOC/DME I-VII <b>108.95</b> Chan 26 (Y)	APP CRS <b>087°</b>	Rwy Ldg TDZE Apt Elev <b>9500</b> <b>13</b> <b>36</b>
---	------------------------	--

# ILS RWY 9L ( SA CAT II )

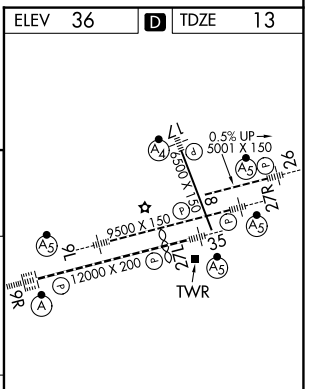
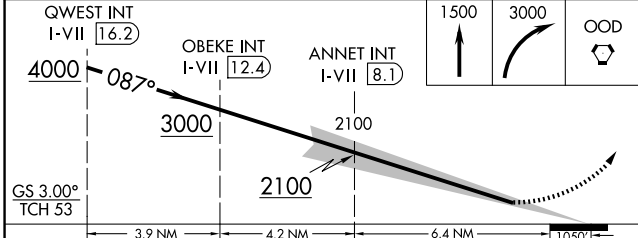
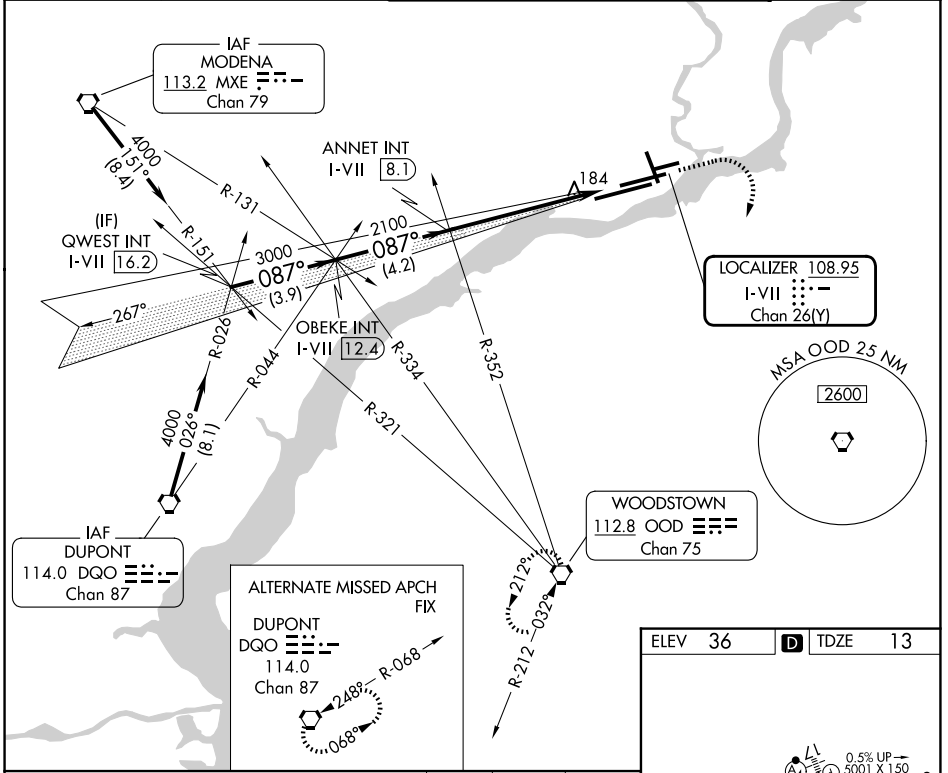
PHILADELPHIA INTL ( PHL )

**Requires specific OPSPEC, MSPEC, or LOA approval.**

MALSR  
AS

MISSED APPROACH: Climb to 1500 then climbing right turn to 3000 direct OOD VORTAC and hold.

D-ATIS <b>133.4</b>	PHILADELPHIA APP CON <b>124.35 319.15</b>	PHILADELPHIA TOWER <b>118.5 327.05</b> (08/26, 09L/27R, 17/35) <b>135.1 327.05</b> (09R/27L)	GND CON <b>121.9 348.6</b>
------------------------	--	--	-------------------------------



QWEST INT I-VII [16.2]	OBEKE INT I-VII [12.4]	ANNET INT I-VII [8.1]	1500	3000	OOD
<p>SA CATEGORY II ILS - SPECIAL AIRCREW &amp; AIRCRAFT CERTIFICATION REQUIRED</p>					
CATEGORY	A	B	C	D	
S-ILS 9L	RA 093/12 100 DA 113				

ELEV 36 TDZE 13

TWR

0.5% UP →  
5001 X 150  
2500 X 150  
12000 X 200

TDZ/CL Rwy 9R  
HIRL all Rws  
REIL Rws 9L and 35

NE-4, 11 JUN 2026 to 09 JUL 2026

NE-4, 11 JUN 2026 to 09 JUL 2026