

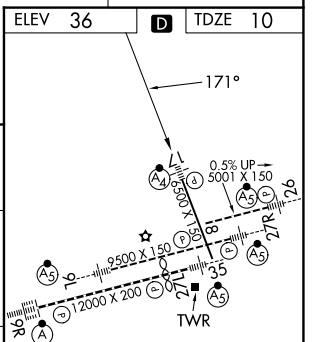
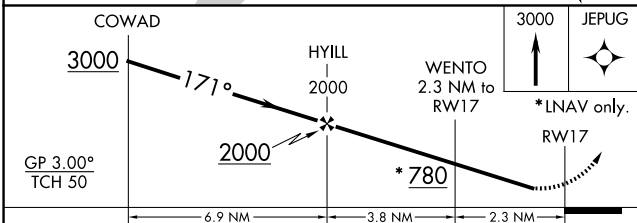
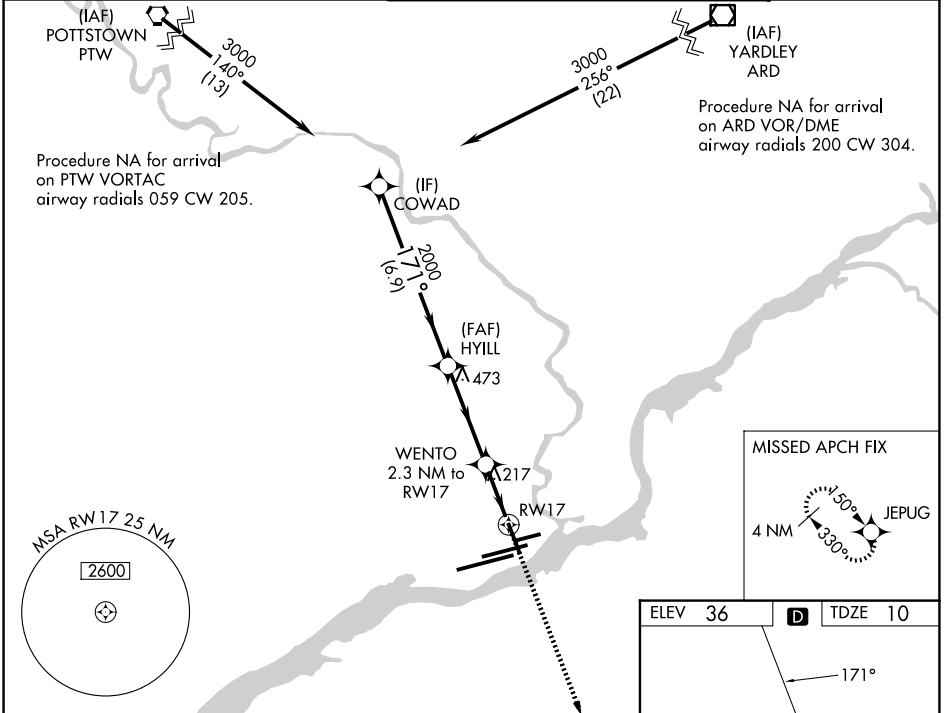
WAAS CH 86222 W17A	APP CRS 171°	Rwy Ldg TDZE 10 Apt Elev 36
--	------------------------	---

RNAV (GPS) RWY 17

PHILADELPHIA INTL (PHL)

RNP APCH - GPS.		MALSF 	MISSED APPROACH: Climb to 3000 direct JEPUG and hold.
	Inop table does not apply to LPV and LNAV/VNAV all Cats and LNAV Cats A/B. For uncompensated Baro-VNAV systems, LNAV/VNAV NA below -12°C or above 54°C. Rwy 17 helicopter visibility reduction below RVR 4000 NA.		

D-ATIS 133.4	PHILADELPHIA APP CON 124.35 319.15	PHILADELPHIA TOWER 118.5 327.05 (08/26, 09L/27R, 17/35) 135.1 327.05 (09R/27L)	GND CON 121.9 348.6
------------------------	--	--	-------------------------------



CATEGORY	A	B	C	D
LPV DA		260/50	250 (300-1)	
LNAV/VNAV DA		322/50	311 (300-1)	
LNAV MDA	480/50	470 (500-1)	480/60	470 (500-1¼)
CIRCLING	540-1 504 (600-1)	600-1 564 (600-1)	620-1½ 584 (600-1½)	720-2¼ 684 (700-2¼)

TDZ/CL Rwy 9R
HIRL all Rwys
REIL Rwys 9L and 35

NE-4, 11 JUN 2026 to 09 JUL 2026

NE-4, 11 JUN 2026 to 09 JUL 2026