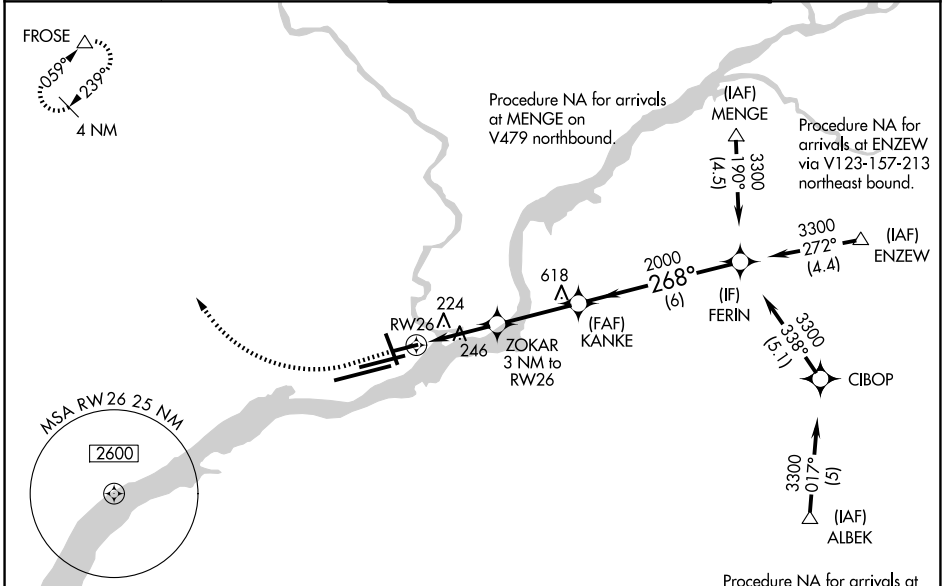


WAAS CH 78117	APP CRS 268°	Rwy Ldg TDZE 36	5001
W26A		Apt Elev 36	

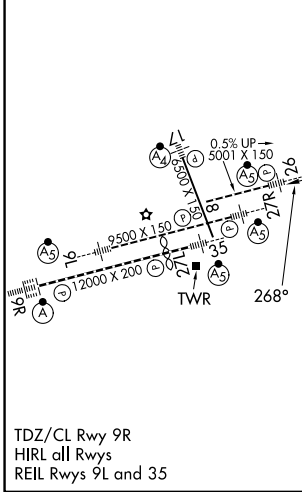
RNAV (GPS) RWY 26

PHILADELPHIA INTL (PHL)

RNP APCH - GPS		MALSR 	MISSED APPROACH: Climb to 800 then climbing right turn to 3000 direct FROSE and hold.
<p>▼ For uncompensated Baro-VNAV systems, LNAV/VNAV NA below -12°C or above 54°C. For inop ALS, increase LPV all Cts visibility 3/8 SM, increase LNAV Cts A and B to RVR 5500. Simultaneous approach authorized. LNAV procedure NA during simultaneous operations. Use of FD or AP providing RNAV track guidance required during simultaneous operations. Rwy 26 helicopter visibility reduction below RVR 4000 NA.</p>			
D-ATIS 133.4	PHILADELPHIA APP CON 124.35 319.15	PHILADELPHIA TOWER 118.5 327.05 (08/26, 09L/27R, 17/35) 135.1 327.05 (09R/27L)	GND CON 121.9 348.6



ELEV 36	D	TDZE 36
---------	----------	---------



	800	3000	FROSE	
* LNAV only.				
	RW26	ZOKAR 3 NM to RW26	KANKE 2000	
	1.2	1.8 NM	3 NM	
			6 NM	
			FERIN 3300	
			GP 3.00° TCH 50	
CATEGORY	A	B	C	D
LPV DA		513/60	477 (500-1¼)	
LNAV/VNAV DA		573-1¾	537 (600-1¾)	
LNAV MDA	540/40	504 (600-¾)	540/55	504 (600-1)
CIRCLING	540-1 504 (600-1)	600-1 564 (600-1)	620-1½ 584 (600-1½)	720-2¼ 684 (700-2¼)

NE-4, 11 JUN 2026 to 09 JUL 2026

NE-4, 11 JUN 2026 to 09 JUL 2026