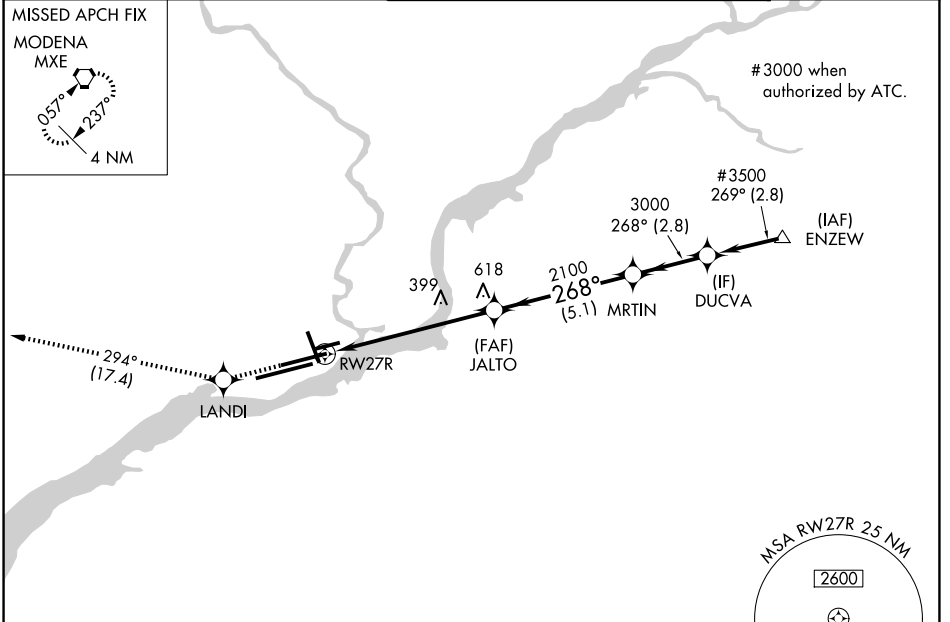


WAAS CH 90122	APP CRS 268°	Rwy Ldg TDZE 11	8864
W27B		Apt Elev 36	

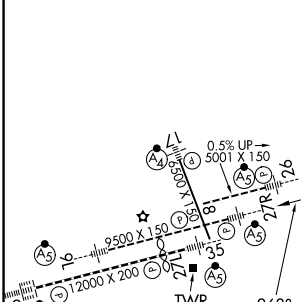
RNAV (GPS) RWY 27R

PHILADELPHIA INTL (PHL)

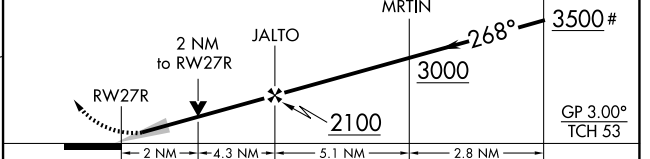
RNP APCH - GPS.		MALSR	MISSED APPROACH: Climb to 3000 direct LANDI and on track 294° to MXE VORTAC and hold.
<p>▼ For uncompensated Baro-VNAV systems, LNAV/VNAV NA below -12°C or above 54°C. For inop ALS, increase LNAV/VNAV all Cats visibility to 1½ SM and LNAV Cat C/D to 2 SM.</p> <p>▲</p>			
D-ATIS 133.4	PHILADELPHIA APP CON 124.35 319.15	PHILADELPHIA TOWER 118.5 327.05 (08/26, 09L/27R, 17/35) 135.1 327.05 (09R/27L)	
		GND CON 121.9 348.6	



ELEV 36	D	TDZE 11
---------	----------	---------



3000	LANDI	tr 294°	MXE	VGSI and RNAV glidepath not coincident (VGSI Angle 3.00°/TCH 81).	# 3000 when authorized by ATC.
------	-------	---------	-----	---	--------------------------------



CATEGORY	A	B	C	D
LPV DA	267/24 256 (300-½)			
LNAV/VNAV DA	520/60 509 (500-1¼)			
LNAV MDA	720/24	709 (700-½)	720-1½ 709 (700-1½)	720-1¾ 709 (700-1¾)
CIRCLING	720-1	684 (700-1)	720-2 684 (700-2)	720-2¼ 684 (700-2¼)

TDZ/CL Rwy 9R
HIRL all Rwys
REIL Rwys 9L and 35

NE-4, 11 JUN 2026 to 09 JUL 2026

NE-4, 11 JUN 2026 to 09 JUL 2026