

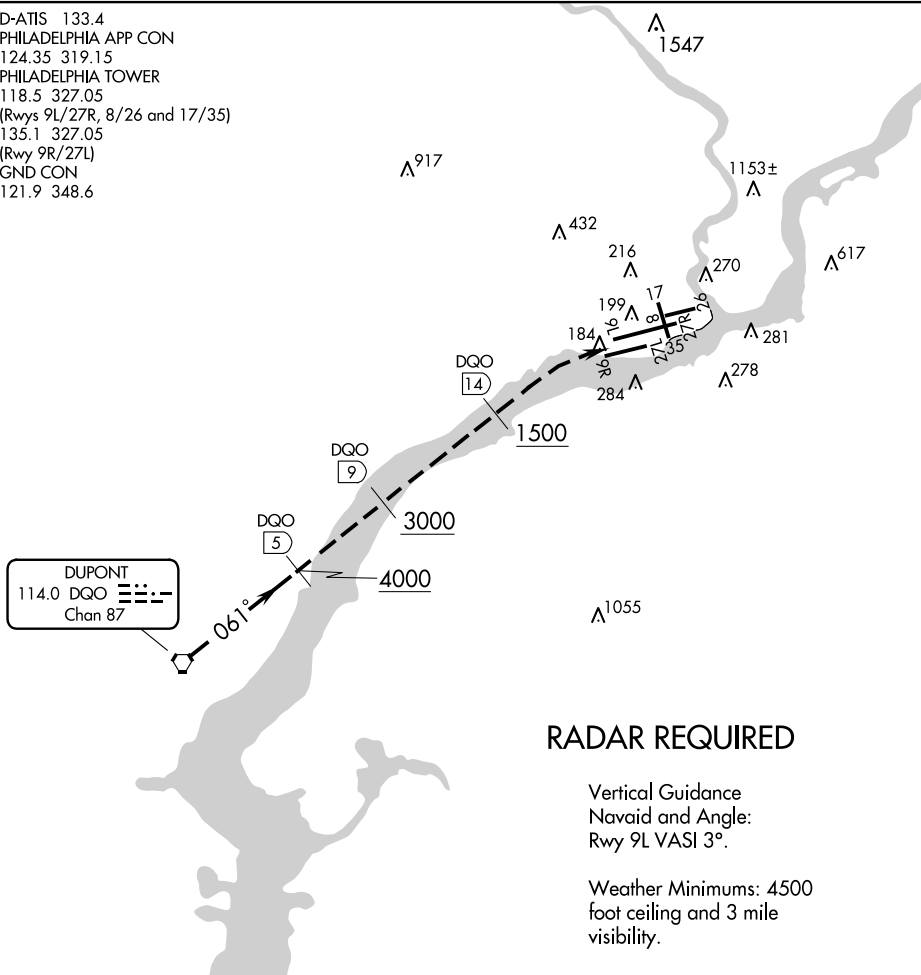
25275

RIVER VISUAL RWY 9L/R

AL-320 (FAA)

PHILADELPHIA INTL (PHL)
PHILADELPHIA, PENNSYLVANIA

D-ATIS 133.4
 PHILADELPHIA APP CON
 124.35 319.15
 PHILADELPHIA TOWER
 118.5 327.05
 (Rwys 9L/27R, 8/26 and 17/35)
 135.1 327.05
 (Rwy 9R/27L)
 GND CON
 121.9 348.6



DUPONT
 114.0 DQO
 Chan 87

RADAR REQUIRED

Vertical Guidance
 Navaid and Angle:
 Rwy 9L VASI 3°.

Weather Minimums: 4500
 foot ceiling and 3 mile
 visibility.

NE-4, 11 JUN 2026 to 09 JUL 2026

NE-4, 11 JUN 2026 to 09 JUL 2026

1	2	3	4	5	6	7	8	9	10	11	12	13	14	15	16	17	18	19	20	21	22	23	24	25	26	27	28	29	30	31	32
---	---	---	---	---	---	---	---	---	----	----	----	----	----	----	----	----	----	----	----	----	----	----	----	----	----	----	----	----	----	----	----

RIVER VISUAL RWY 9L/R

Expect RADAR vectors to the DQO R-061.

Aircraft may proceed to the DQO R-061/5.0 DME, then descend from 4000 feet over the Delaware River and follow the river to the airport.

RIVER VISUAL RWY 9L/R

Orig 05MAR92

39°52'N-75°14'W

PHILADELPHIA, PENNSYLVANIA
PHILADELPHIA INTL (PHL)