

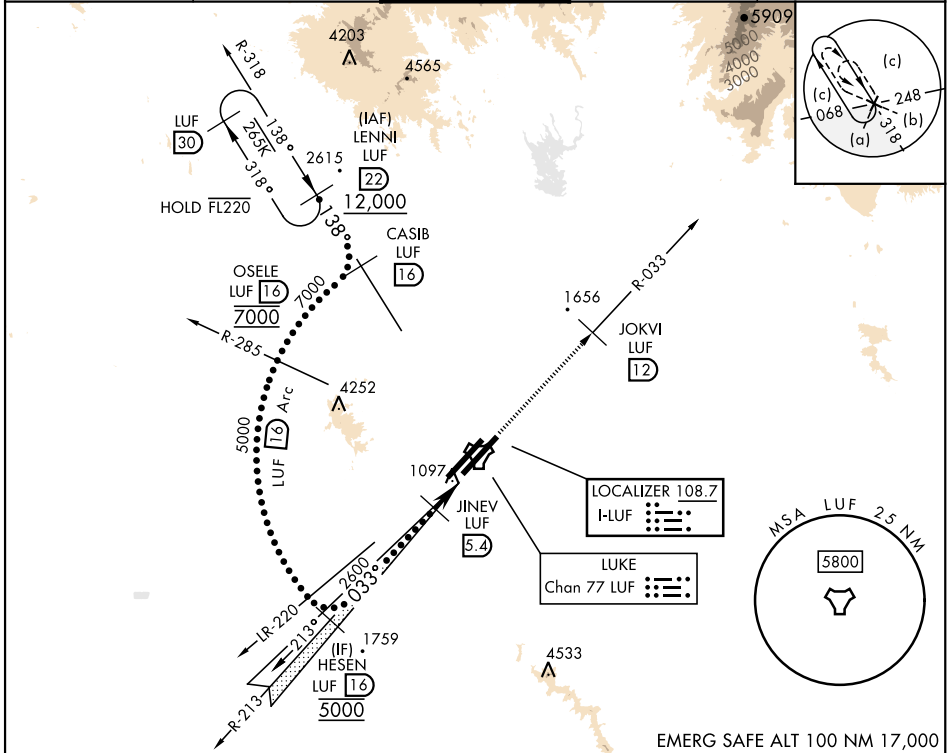
# HI-ILS or LOC/DME RWY 3R

LOC I-LUF <b>108.7</b>	APCH CRS <b>033°</b>	Rwy ldg 9912 TDZE 1074 Arprt Elev 1084	[USAF]	LUKE AFB (KLUF)
---------------------------	-------------------------	---	--------	-----------------

\* When ALS inop, increase vis to 3/4 mile.  
 \*\* When ALS inop, increase vis 1 3/8 miles.

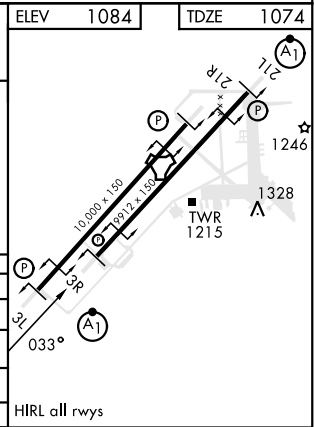
ALSF-1 (A1) MISSED APPROACH: Climbing to 4000, intercept LUF TACAN R-033 to 12 DME (JOKVI). Contact LUKE APP CON.

ATIS ★ <b>134.925 269.85</b>	APP CON★ <b>118.15 363.125</b>	TOWER★ <b>119.1 379.9</b>	GND CON★ <b>133.175 335.8</b>	CLNC DEL★ <b>126.25 273.475</b>
---------------------------------	-----------------------------------	------------------------------	----------------------------------	------------------------------------



EMERG SAFE ALT 100 NM 17,000

LENNI LUF (22) 12,000	CASIB LUF (16) 7,000	OSELE LUF (16) 7,000	HESEN LUF (16) 5,000	JINEV LUF (5.4) 5,400	JOKVI LUF (12) 12,000	ELEV 1084	TDZE 1074	
VGSi and GS Angle not coincident.								
GS 3.00° TCH 55'								
4.1 NM						0.5 NM		
CATEGORY	C	D	E					
S-ILS 3R *	1274-1/2	200	(200-1/2)					
S-LOC/DME 3R **	1560-1	486	(500-1)					
SIDESTEP 3L	1560-2 1/2	483	(500-2 1/2)					
CIRCLING	NOT AUTHORIZED						HIRL all rwys	



# HI-ILS or LOC/DME RWY 3R

SW-4, 11 JUN 2026 to 09 JUL 2026

SW-4, 11 JUN 2026 to 09 JUL 2026