

LUKE-ONE DEPARTURE (LUKE1.DRK)

[USAF]

GLENDALE, ARIZONA

ATIS ★ 134.925 269.85
 CLNC DEL ★
 126.25 273.475
 GND CON ★
 133.175 335.8
 TOWER ★
 119.1 379.9
 DEP CON ★
 118.15 363.125

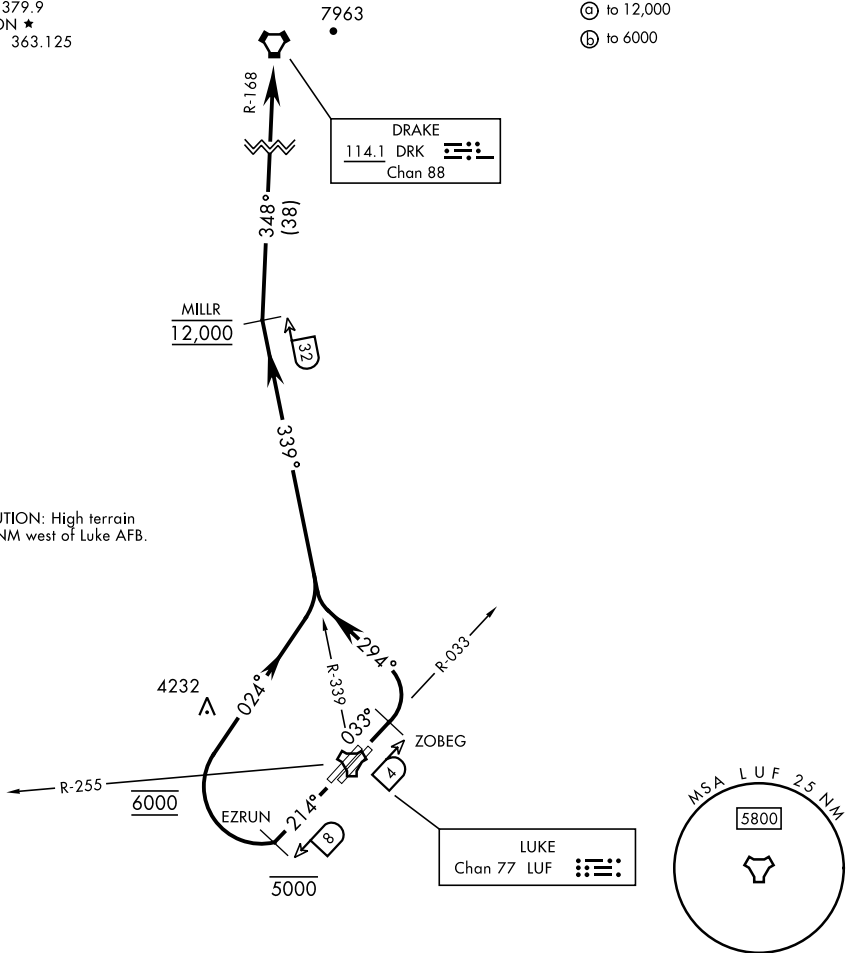
RADAR required

| Rwy | Knots | 60 | 120 | 180 | 240 | 300 | 360 |
|-------------|----------|-----|-----|------|------|------|------|
| †3 L/R (a) | V/V(fpm) | 336 | 672 | 1008 | 1344 | 1680 | 2016 |
| *21 L/R (b) | V/V(fpm) | 480 | 960 | 1440 | 1920 | 2400 | 2880 |

* Minimum † ATC Climb Rate

(a) to 12,000

(b) to 6000



CAUTION: High terrain
10 NM west of Luke AFB.

DEPARTURE ROUTE DESCRIPTION

TAKEOFF RWY 3 L/R: Climb heading 033° to 12,000. Abeam ZOBEG turn left heading 294° to intercept and proceed via LUF TACAN R-339 outbound to MILLR then via DRK VORTAC R-168 to DRK. Cross MILLR at 12,000 or as assigned by ATC.

TAKEOFF RWY 21 L/R: Climb heading 214° to 5000. Abeam EZRUN turn right heading 024° to intercept and proceed via LUF TACAN R-339 outbound to MILLR then via DRK VORTAC R-168 to DRK. Cross EZRUN at or below 5000. Cross LUF R-255 at 6000. Climb and maintain 12,000 until MILLR or as assigned by ATC.

LUKE-ONE DEPARTURE (LUKE1.DRK)

Amdt 2 25JAN24

GLENDALE, ARIZONA

LUKE AFB (KLUF)

SW-4, 11 JUN 2026 to 09 JUL 2026

SW-4, 11 JUN 2026 to 09 JUL 2026