

LOC/DME I-RJG <b>110.75</b> Chan 44(Y)	APP CRS <b>258°</b>	Rwy Ldg TDZE <b>7800</b> <b>1126</b>	Apt Elev <b>1135</b>
--	------------------------	--	-------------------------

# ILS or LOC RWY 25L

PHOENIX SKY HARBOR INTL (PHX)

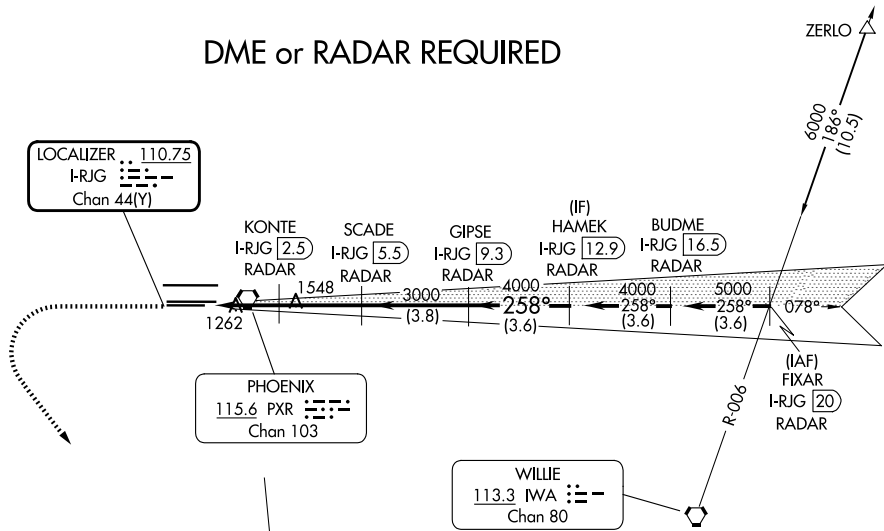
**Autopilot coupled approach NA below 1925.**  
**Simultaneous approach authorized with Rwy 26.**

**MALS**

**MISSED APPROACH:** Climb to 3000 then climbing left turn to 5000 on heading 130° and PXR R-163 to POPKE/15 DME and hold.

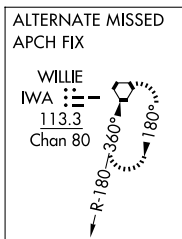
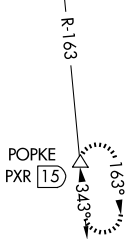
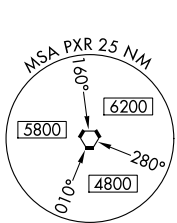
D-ATIS <b>127.575</b>	PHOENIX APP CON <b>128.65 353.9</b>	PHOENIX TOWER <b>118.7 278.8</b> (8-26) <b>120.9 254.3</b> (7L-25R, 7R-25L)	GND CON <b>119.75 269.2</b> (N) <b>132.55 269.2</b> (S)
--------------------------	--	---	---

## DME or RADAR REQUIRED

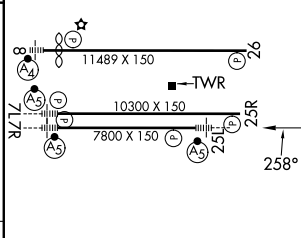
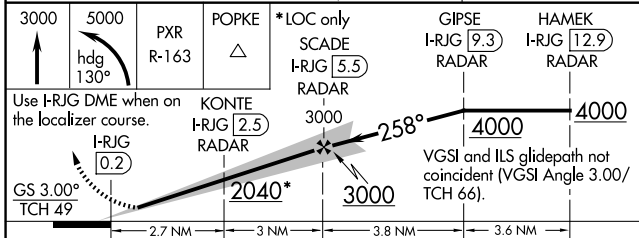


SW-4, 11 JUN 2026 to 09 JUL 2026

SW-4, 11 JUN 2026 to 09 JUL 2026



ELEV 1135	<b>D</b>	TDZE 1126
-----------	----------	-----------



CATEGORY	A		B		C		D	
S-ILS 25L	1326-1/2		200 (200-1/2)					
S-LOC 25L	1520-1/2		394 (400-1/2)		1520-3/4		394 (400-3/4)	
CIRCLING	1740-1		605 (700-1)		2040-2 3/4		2560-3	
					905 (1000-2 3/4)		1425 (1500-3)	

HIRL Rwy 8-26, 7L-25R and 7R-25L					
REIL Rwy 26					
FAF to MAP 5.6 NM					
Knots	60	90	120	150	180
Min:Sec	5:36	3:44	2:48	2:14	1:52