

LOC/DME I-PHX <b>111.5</b> Chan <b>52</b>	APP CRS <b>078°</b>	Rwy Ldg <b>10300</b> TDZE <b>1116</b> Apt Elev <b>1135</b>
---	------------------------	--

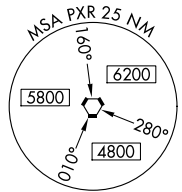
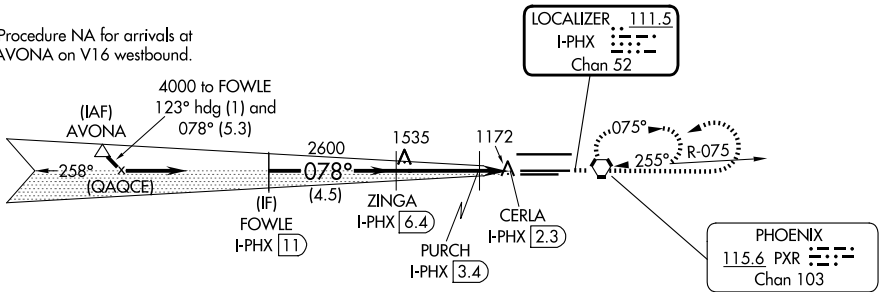
# ILS or LOC/DME RWY 7L

PHOENIX SKY HARBOR INTL (PHX)

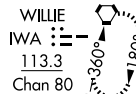
<p><b>▽</b> For inoperative ALS, increase S-LOC 7L Cats C/D visibility to RVR 5500.</p> <p><b>▲</b></p>	<p>MALSR</p>	<p>MISSED APPROACH: Climb to 5000 then left turn direct PXR VORTAC and hold.</p>	
			<p>D-ATIS <b>127.575</b></p>

## DME REQUIRED

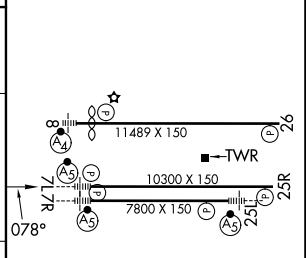
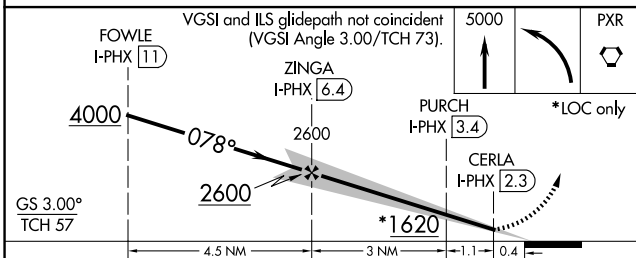
Procedure NA for arrivals at AVONA on V16 westbound.



### ALTERNATE MISSED APCH FIX



ELEV 1135 **D** TDZE 1116



CATEGORY	A	B	C	D
S-ILS 7L	1326/24		210 (200-½)	
S-LOC 7L	1460/24	344 (400-½)	1460/30	344 (400-⅝)
CIRCLING	1740-1	605 (700-1)	2040-2¾ 905 (1000-2¾)	2560-3 1425 (1500-3)

HIRL Rwy 8-26, 7L-25R and 7R-25L  
REIL Rwy 26

SW-4, 11 JUN 2026 to 09 JUL 2026

SW-4, 11 JUN 2026 to 09 JUL 2026