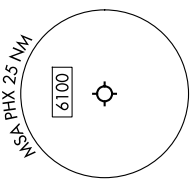


**TOP ALTITUDE:**  
8000

PHOENIX DEP CON  
126.8 269.6  
D-AIS  
127.575  
CLNC DEL  
118.1 269.2  
GND CON  
119.75 269.2 (NORTH)  
132.55 269.2 (SOUTH)  
PHOENIX TOWER  
118.7 278.8 (Rwy 8-26)  
120.9 254.3 (Rwys 7L-25R, 7R-25L)



KEENS THREE DEPARTURE (RNAV)

(KEENS3.KEENS) 25JAN24

DEPARTURE ROUTE DESCRIPTION

**TAKEOFF RUNWAYS 7L/R, 8:** Climb on heading 078° to 1635, then direct FUTEP, then on track 132° to AZCRD, then on track 199° to USEYE, then on track 264° to OAKLI, then on MASVE at/above 7000 and at/below 220K, then on track 264° to OAKLI, then on track 268° to KEENS, thence. . . .

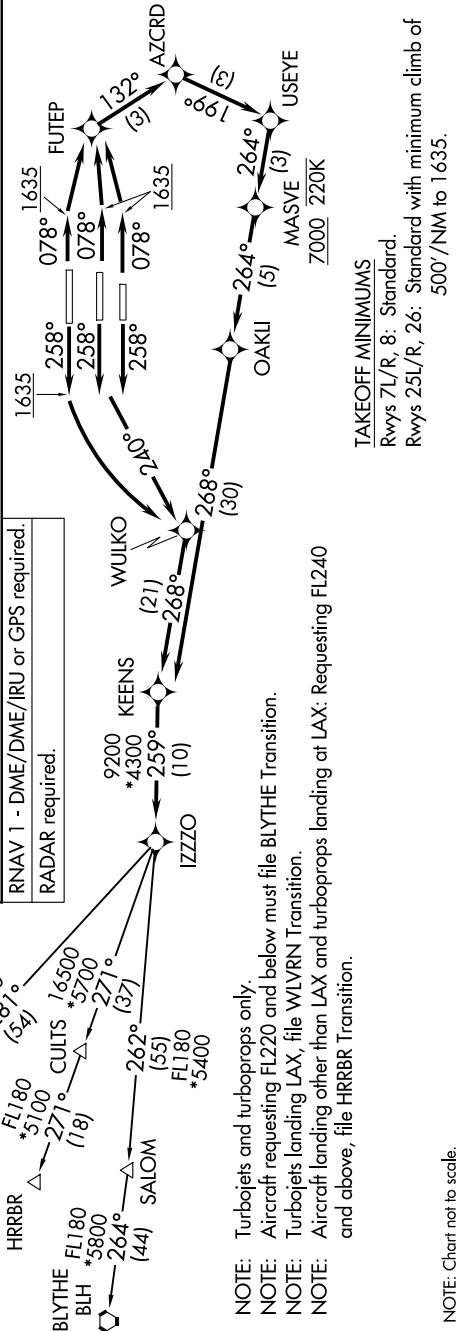
**TAKEOFF RUNWAYS 25L/R:** Climb on heading 258° to intercept course 240° to WULKO, then on track 268° to KEENS, thence. . . .

**TAKEOFF RUNWAY 26:** Climb on heading 258° to 1635, then left turn direct WULKO, then on track 268° to KEENS, thence. . . .

. . . on track 259° to IZZO, then on (transition). Maintain 8000, expect higher altitude 3 minutes after departure.

**BLYTHE TRANSITION (KEENS3.BLH)**  
**HRRBR TRANSITION (KEENS3.HRRBR)**  
**WLVRN TRANSITION (KEENS3.WLVRN)**

RNAV 1 - DME/DME/IRU or GPS required.  
RADAR required.



**TAKEOFF MINIMUMS**  
Rwys 7L/R, 8: Standard.  
Rwys 25L/R, 26: Standard with minimum climb of 500'/NM to 1635.

**NOTE:** Turbojets and turboprops only.  
**NOTE:** Aircraft requesting FL220 and below must file BLYTHE Transition.  
**NOTE:** Turbojets landing LAX, file WLVRN Transition.  
**NOTE:** Aircraft landing other than LAX and turboprops landing at LAX: Requesting FL240 and above, file HRRBR Transition.

NOTE: Chart not to scale.