

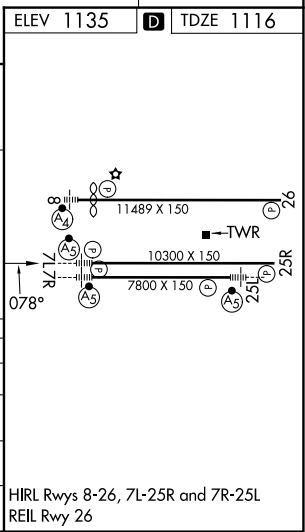
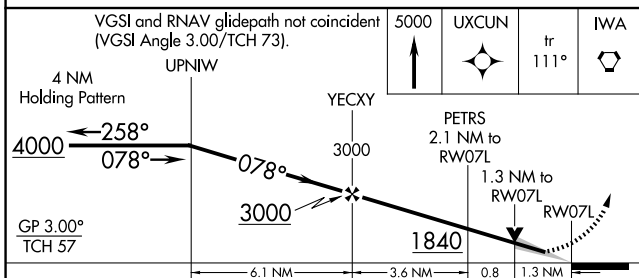
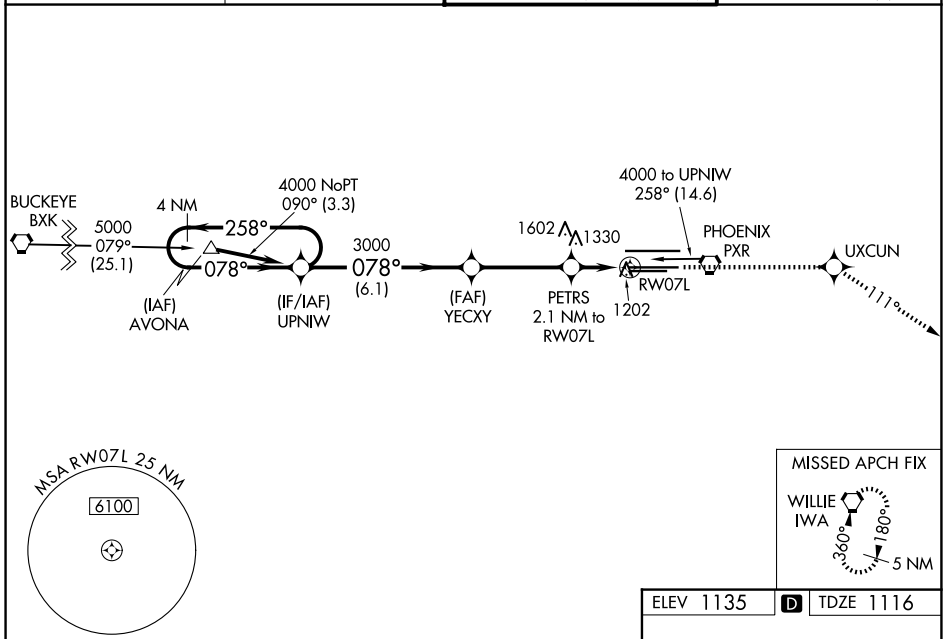
WAAS CH 65811 W07A	APP CRS 078°	Rwy Ldg 10300 TDZE 1116 Apt Elev 1135
--	------------------------	--

RNAV (GPS) Y RWY 7L

PHOENIX SKY HARBOR INTL (PHX)

RNP APCH - GPS.		MALSRL	MISSED APPROACH: Climb to 5000 direct UXCUN and via 111° track to IWA VORTAC and hold.
<p>▼ For inop ALS, increase visibility LPV all Cats to RVR 4500, LNAV/VNAV all Cats to RVR 6000, LNAV Cats C/D to 1½ SM. For uncompensated Baro-VNAV systems, LNAV/VNAV NA below -17°C or above 46°C. Simultaneous approach authorized. Use of FD or AP providing RNAV track guidance required during simultaneous operations. LNAV procedure NA during simultaneous operations.</p>			

D-ATIS 127.575	PHOENIX APP CON 128.65 353.9	PHOENIX TOWER 118.7 278.8 (8-26) 120.9 254.3 (7L-25R, 7R-25L)	GND CON 119.75 269.2 (N) 132.55 269.2 (S)
--------------------------	--	---	---



CATEGORY	A	B	C	D
LPV DA		1389/24	273 (300-½)	
LNAV/VNAV DA		1519/50	403 (400-1)	
LNAV MDA	1580/24	464 (500-½)	1580/40 464 (500-¾)	1580/50 464 (500-1)
CIRCLING	1740-1	605 (700-1)	2040-2¾ 905 (1000-2¾)	2560-3 1425 (1500-3)

SW-4, 11 JUN 2026 to 09 JUL 2026

SW-4, 11 JUN 2026 to 09 JUL 2026