

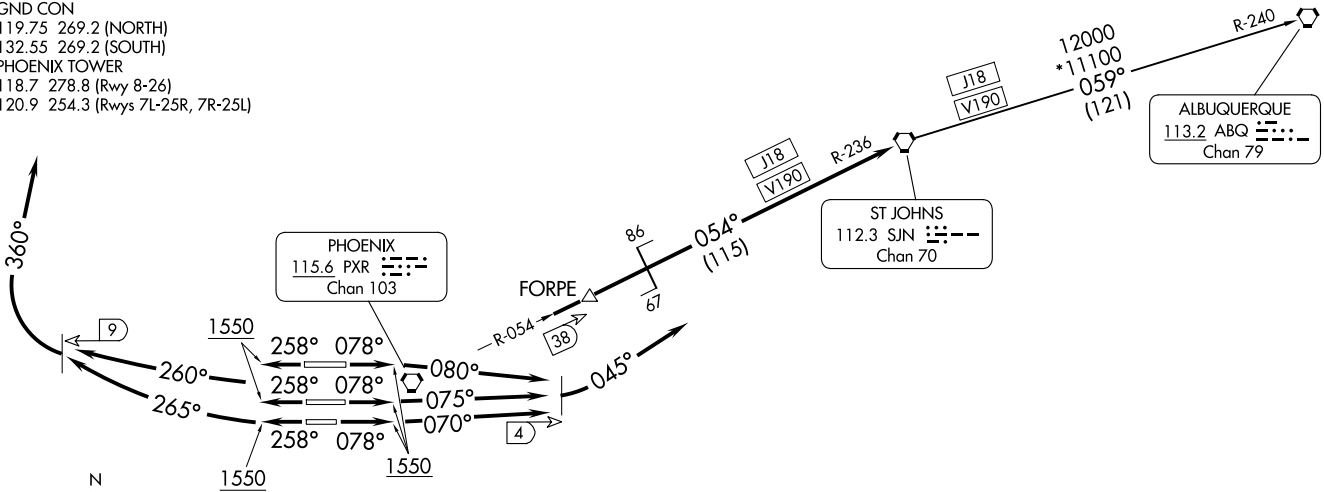
ST. JOHNS NINE DEPARTURE
(SIN9.SJN) 28FEB19

PHOENIX DEP CON
119.2 281.45
D-ATIS
127.575
CLNC DEL
118.1 269.2
CPDLC
GND CON
119.75 269.2 (NORTH)
132.55 269.2 (SOUTH)
PHOENIX TOWER
118.7 278.8 (Rwy 8-26)
120.9 254.3 (Rwys 7L-25R, 7R-25L)

TAKEOFF MINIMUMS

Rwys 7L, 7R, 8: Standard with minimum climb of 350' per NM to 8000.
Rwys 25L, 25R, 26: Standard with minimum climb of 350' per NM to 8000.

TOP ALTITUDE:
8000



- NOTE: Restricted to turbojet and turboprop aircraft only.
- NOTE: RADAR and DME required.
- NOTE: Aircraft filing over ACH, LBL, ONM, CNX, PNH, MMB, TCC, IRW and TXO file BALDY DEPARTURE.
- NOTE: Aircraft filing over CIM, FTI and GCK file ST JOHNS DEPARTURE.

(CONTINUED ON FOLLOWING PAGE)

NOTE: Chart not to scale.

PHOENIX SKY HARBOR INTL (PHX)
PHOENIX, ARIZONA

(SIN9.SJN) 23334
ST. JOHNS NINE DEPARTURE

AL-322 (FAA)

PHOENIX SKY HARBOR INTL (PHX)
PHOENIX, ARIZONA



DEPARTURE ROUTE DESCRIPTION

TAKEOFF RUNWAY 7L: Climb heading 078° to 1550, then climbing left turn heading 075°, at 4 DME east of PXR VORTAC, climbing left turn heading 045° to PXR R-054 to SJN VORTAC, maintain 8000. Thence

TAKEOFF RUNWAY 7R: Climb heading 078° to 1550, then climbing left turn heading 070°, at 4 DME east of PXR VORTAC, climbing left turn heading 045° to PXR R-054 to SJN VORTAC, maintain 8000. Thence

TAKEOFF RUNWAY 8: Climb heading 078° to 1550, then climbing right turn heading 080°, at 4 DME east of PXR VORTAC, climbing left turn heading 045° to PXR R-054 to SJN VORTAC, maintain 8000. Thence

TAKEOFF RUNWAY 25L: Climb heading 258° to 1550, then climbing right turn heading 265°, at 9 DME west of PXR VORTAC, climbing right turn heading 360°, maintain 8000 for RADAR vectors to PXR R-054 to SJN VORTAC. Thence

TAKEOFF RUNWAY 25R: Climb heading 258° to 1550, then climbing right turn heading 260°, at 9 DME west of PXR VORTAC, climbing right turn heading 360°, maintain 8000 for RADAR vectors to PXR R-054 to SJN VORTAC. Thence

TAKEOFF RUNWAY 26: Climb heading 258° to 1550, then climbing right turn heading 260°, at 9 DME west of PXR VORTAC, climbing right turn heading 360°, maintain 8000 for RADAR vectors to PXR R-054 to SJN VORTAC. Thence

. . . . (transition). Expect filed altitude 3 minutes after departure.

LOST COMMUNICATIONS: Expect filed altitude 3 minutes after departure.

ALBUQUERQUE TRANSITION (SJN9.ABQ): From over SJN VORTAC on SJN R-059 and ABQ R-240 to ABQ VORTAC.

SW-4, 11 JUN 2026 to 09 JUL 2026

SW-4, 11 JUN 2026 to 09 JUL 2026