

WAAS CH 53404 W13A	APP CRS 133°	Rwy Ldg TDZE Apt Elev	6900 1731 1744
--	------------------------	-----------------------------	---

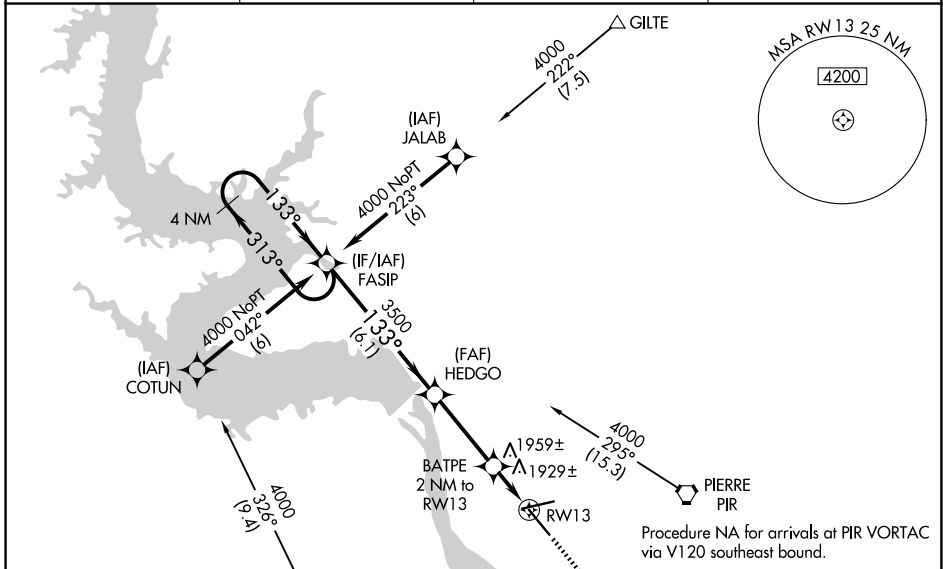
RNAV (GPS) RWY 13

PIERRE RGNL (PIR)

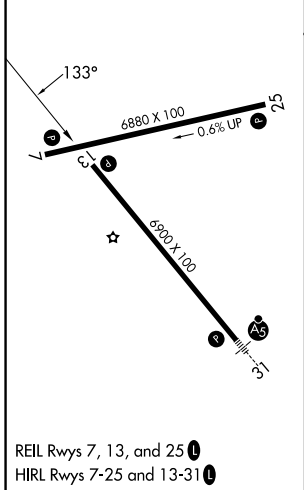
⚠ For uncompensated Baro-VNAV systems, LNAV/VNAV NA below -18°C (0°F) or above 45°C (113°F). DME/DME RNP-0.3 NA.

⚠ MISSED APPROACH: Climb to 4000 direct HOGEX and hold.

ASOS 119.025	MINNEAPOLIS CENTER 125.1 269.1	CTAF 122.7	UNICOM 122.95
------------------------	--	----------------------	-------------------------



ELEV 1744	D	TDZE 1731
-----------	----------	-----------



	4 NM Holding Pattern		FASIP	HEDGO	BATPE 2 NM to RW13	4000	HOGEX
	4000		← 313°	133° →	133°	3500	*2400
	GP 3.00°				*1.4 NM to RW13		RW13
	TCH 52				0.6	1.4 NM	
					6.1 NM	3.3 NM	
CATEGORY	A	B	C	D			
LPV DA	1981- ³ / ₄		250 (300- ³ / ₄)				
LNAV/VNAV DA	2285-2		554 (600-2)				
LNAV MDA	2220-1	489 (500-1)	2220-1 ¹ / ₄	489 (500-1 ¹ / ₄)	2220-1 ¹ / ₂	489 (500-1 ¹ / ₂)	
CIRCLING	2240-1	2300-1	2400-1 ³ / ₄	2460-2 ¹ / ₄	496 (500-1)	556 (600-1)	656 (700-1 ³ / ₄)
					716 (800-2 ¹ / ₄)		

NC-1, 11 JUN 2026 to 09 JUL 2026

NC-1, 11 JUN 2026 to 09 JUL 2026