

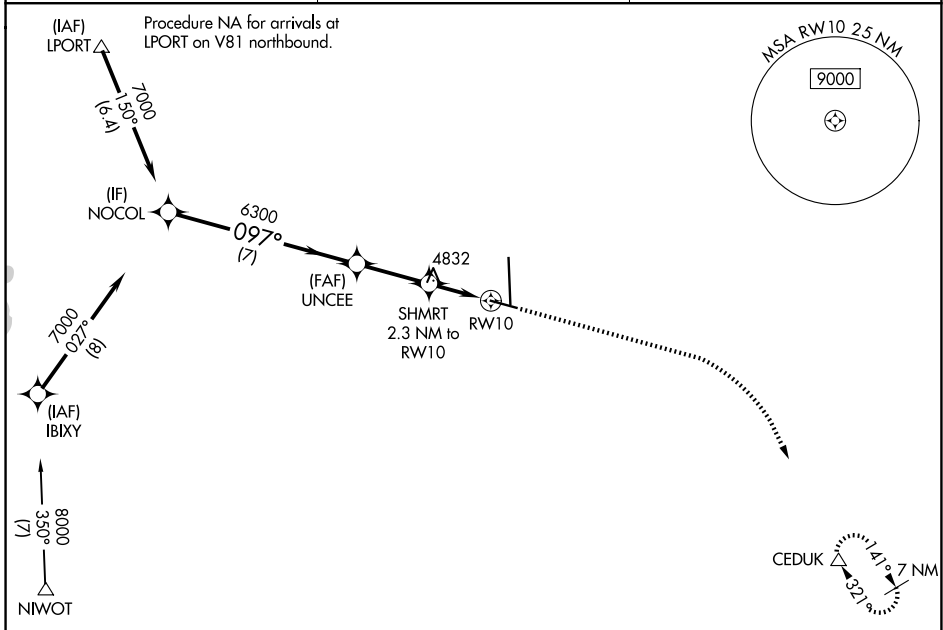
WAAS CH 62900 W10A	APP CRS 097°	Rwy Ldg TDZE Apt Elev 5801 4661 4697
--	------------------------	--

RNAV (GPS) RWY 10

GREELEY-WELD COUNTY (GXY)

RNP APCH.	MISSED APPROACH: Climb to 5400 then climbing right turn to 7000 direct CEDUK and hold.
<p>▼ For uncompensated Baro-VNAV systems, LNAV/VNAV NA below -24°C or above 54°C.</p> <p>▲</p>	

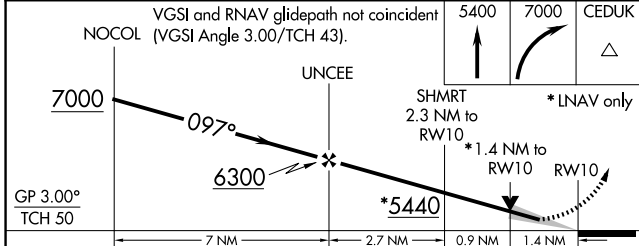
AWOS-3PT 135.175	DENVER APP CON 134.85 251.125	UNICOM 122.7 (CTAF) 0
----------------------------	---	---------------------------------



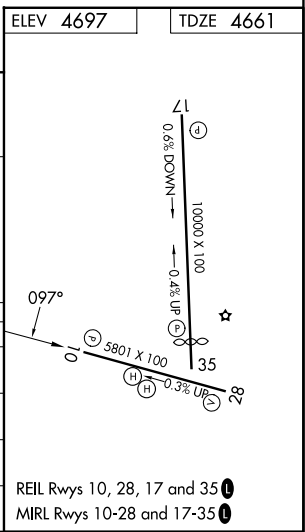
SW-1, 11 JUN 2026 to 09 JUL 2026

SW-1, 11 JUN 2026 to 09 JUL 2026

Procedure NA for arrivals at NIWOT on V575 southeast bound and V220 southwest bound.



CATEGORY	A		B		C		D	
	DA	MDA	DA	MDA	DA	MDA	DA	MDA
LPV	4911-3/4	5140-1	4920-3/4	479 (500-1)	250 (300-3/4)	5140-1 3/8	479 (500-1 3/8)	
LNAV/VNAV	4920-3/4	5140-1	259 (300-3/4)	5140-1 3/8	479 (500-1 3/8)	5380-2 1/4	479 (500-1 3/8)	
CIRCLING	5140-1 443 (500-1)	5200-1 503 (600-1)	5200-1 1/2 503 (600-1 1/2)	5200-1 1/2 503 (600-1 1/2)	5380-2 1/4 683 (700-2 1/4)	5380-2 1/4 683 (700-2 1/4)		



REIL Rwy 10, 28, 17 and 35
MIRL Rwy 10-28 and 17-35