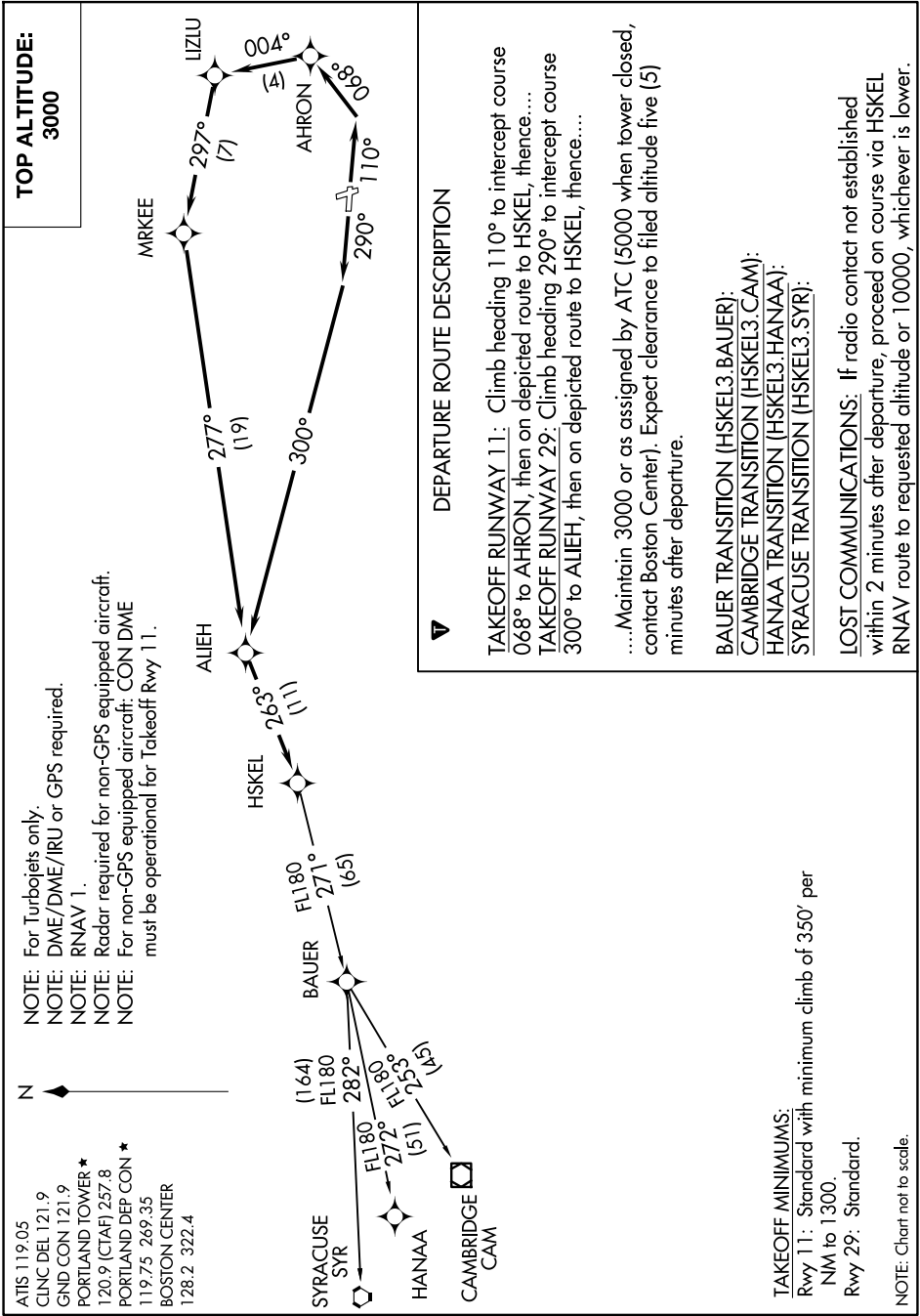


HSKEL THREE DEPARTURE (RNAV)

9200 JUN 60 NE-1, 11 JUN 2026 to 09 JUL 2026



NOTE: For Turbojets only.
 NOTE: DME/DME/IRU or GPS required.
 NOTE: RNAV 1.
 NOTE: Radar required for non-GPS equipped aircraft.
 NOTE: For non-GPS equipped aircraft: CON DME must be operational for Takeoff Rwy 11.



ATIS 119.05
 CLNC DEL 121.9
 GND CON 121.9
 PORTLAND TOWER *
 120.9 (CTAF) 257.8
 PORTLAND DEP CON *
 119.75 269.35
 BOSTON CENTER
 128.2 322.4

SYRACUSE SYR (164)
 FL180 282°
 HANAA (51)
 FL180 272°
 CAMBRIDGE CAM (15)
 FL180 255°

BAUER (65)
 FL180 271°

HSKEL (111)
 263°

ALIEH (119)
 277°

MRKEE (7)
 297°

LIZLU (4)
 004°

AHRON (890)
 110°

HSKEL (110)
 290°

TAKEOFF MINIMUMS:
 Rwy 11: Standard with minimum climb of 350' per NM to 1300.
 Rwy 29: Standard.

NOTE: Chart not to scale.

NE-1, 11 JUN 2026 to 09 JUL 2026