

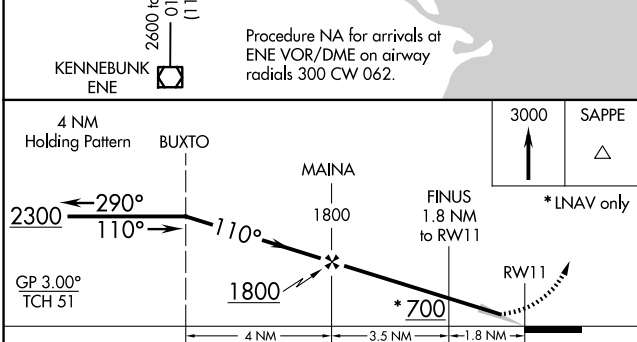
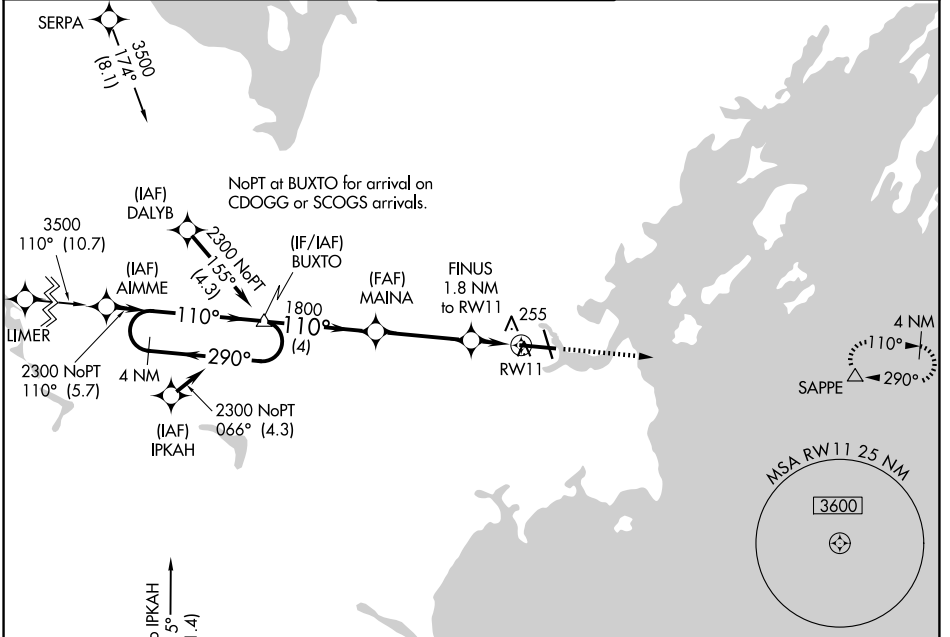
WAAS CH <b>70306</b> <b>W11A</b>	APP CRS <b>110°</b>	Rwy Ldg TDZE Apt Elev	<b>7200</b> <b>76</b> <b>76</b>
--	------------------------	-----------------------------	---------------------------------------

# RNAV (GPS) RWY 11

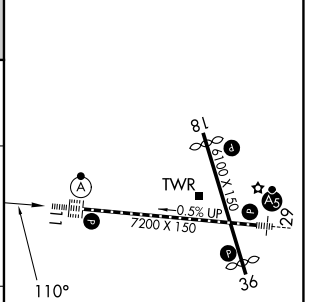
PORTLAND INTL JETPORT (P'WM)

RNP APCH - GPS.		ALSF-2	MISSED APPROACH: Climb to 3000 direct SAPPE and hold, continue climb-in-hold to 3000.
<p><b>▽</b> For uncompensated Baro-VNAV systems, LNAV/VNAV NA below -18°C or above 54°C.</p> <p><b>▲</b></p>			

ATIS <b>119.05</b>	PORTLAND APP CON * <b>119.75 269.35</b>	PORTLAND TOWER * <b>120.9</b> (CTAF) <b>257.8</b>	GND CON <b>121.9</b>	UNICOM <b>122.95</b>
-----------------------	--	--	-------------------------	-------------------------



ELEV 76	<b>D</b>	TDZE 76
---------	----------	---------



CATEGORY	A	B	C	D
LPV DA		276/18	200 (200-½)	
LNAV/VNAV DA		456/40	380 (400-¾)	
LNAV MDA	520/24	444 (500-½)	520/45	444 (500-¾)
CIRCLING	620-1 544 (600-1)	640-1 564 (600-1)	740-1¾ 664 (700-1¾)	860-2½ 784 (800-2½)

TDZL/RCLS Rwy 11 **Ⓛ**

MIRL Rwy 18-36 **Ⓛ**

HIRL Rwy 11-29 **Ⓛ**

REIL Rwys 18 and 36 **Ⓛ**

NE-1, 11 JUN 2026 to 09 JUL 2026

NE-1, 11 JUN 2026 to 09 JUL 2026