


|  |                        |   |
|--|------------------------|---|
| LOC/DME I-ARJ<br><b>109.3</b><br>Chan 30 | APP CRS<br><b>227°</b> | Rwy Ldg <b>8700</b><br>TDZE <b>50</b><br>Apt Elev <b>54</b> |
|--|------------------------|---|

# ILS RWY 23 (SA CAT I & II)

RHODE ISLAND TF GREEN INTL (PVD)

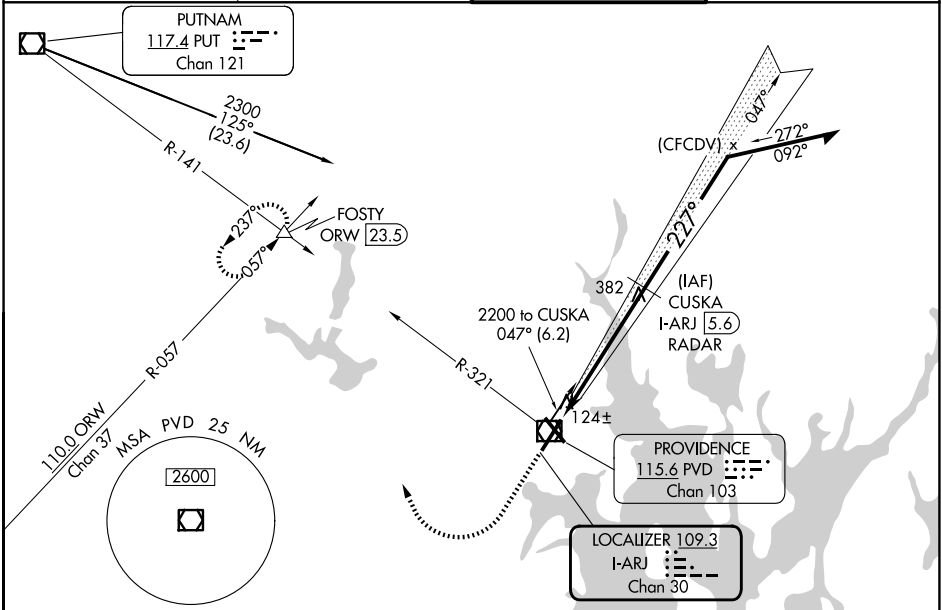
DME or RADAR required for procedure entry.

SA Cat I: Requires specific OPSPEC, MSPEC, or LOA approval and use of HUD to DH.  
SA CAT II: Reduced Lighting: Requires specific OPSPEC, MSPEC, or LOA approval and use of Autoland or HUD to touchdown.  
Procedure NA when tower closed.

MALSR 

MISSED APPROACH: Climb to 700 then climbing right turn to 2500 on heading 350° and PVD VOR/DME R-321 to FOSTY INT/ ORW 23.5 DME and hold.

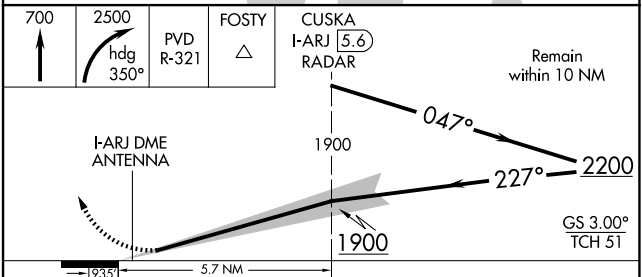
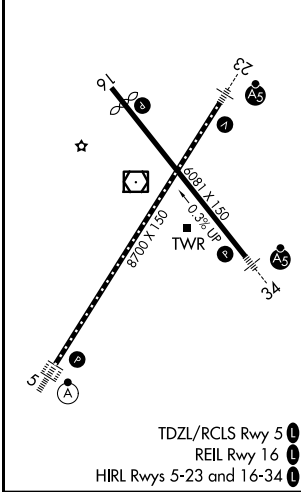
|                        |  |   |                               |
|------------------------|--|---|-------------------------------|
| D-ATIS<br><b>124.2</b> | PROVIDENCE APP CON *<br><b>123.675 244.875</b> | PROVIDENCE TOWER *<br><b>120.7 (CTAF) 257.8</b> | GND CON<br><b>121.9 348.6</b> |
|------------------------|--|---|-------------------------------|



NE-1, 11 JUN 2026 to 09 JUL 2026

NE-1, 11 JUN 2026 to 09 JUL 2026

|         |          |         |
|---------|----------|---------|
| ELEV 54 | <b>D</b> | TDZE 50 |
|---------|----------|---------|



| CATEGORY | A         | B         | C          | D |
|----------|-----------|-----------|------------|---|
| S-ILS 23 | SA CAT I  | RA 163/14 | 150 DA 200 |   |
| S-ILS 23 | SA CAT II | RA 103/12 | 100 DA 150 |   |

## SA CATEGORY I & II ILS - SPECIAL AIRCREW & AIRCRAFT CERTIFICATION REQUIRED