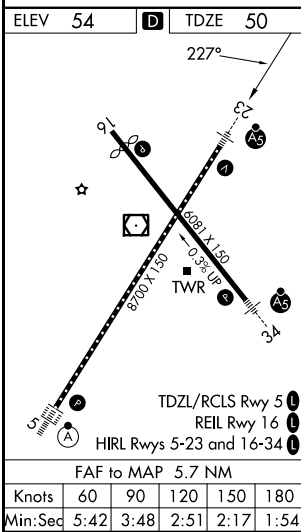
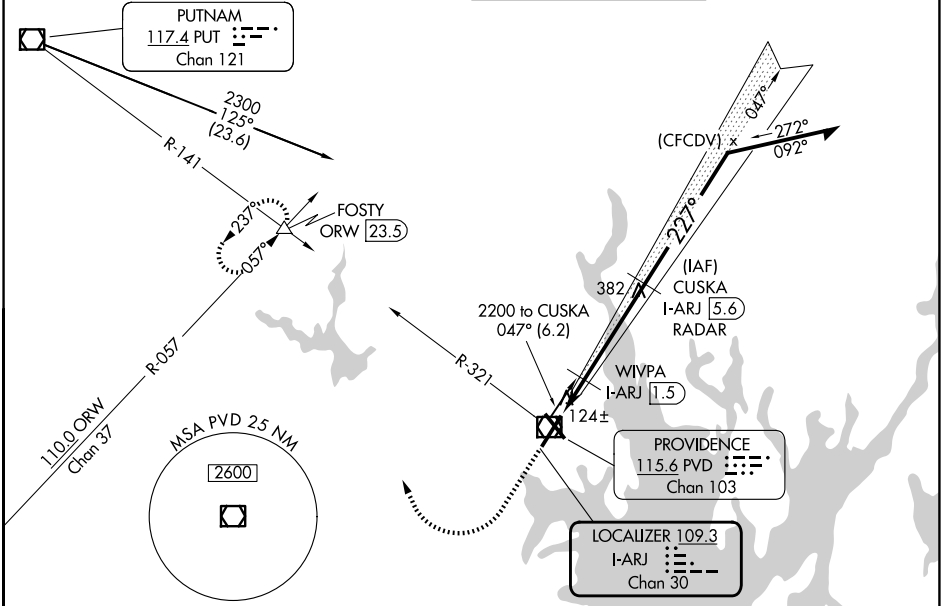


LOC/DME I-ARJ 109.3 Chan 30	APP CRS 227°	Rwy Ldg 8700 TDZE 50 Apt Elev 54
--	------------------------	---

ILS or LOC RWY 23

RHODE ISLAND TF GREEN INTL (PVD)

DME or RADAR required for procedure entry.		MALSR	MISSED APPROACH: Climb to 700 then climbing right turn to 2500 on heading 350° and PVD VOR/DME R-321 to FOSTY INT/ORW 23.5 DME and hold.
**RVR 1800 authorized with use of FD or AP or HUD to DA.			
D-ATIS 124.2	PROVIDENCE APP CON * 123.675 244.875	PROVIDENCE TOWER * 120.7 (CTAF) 0 257.8	GND CON 121.9 348.6



ELEV 54	TDZE 50	700	2500	PVD R-321	FOSTY	VGSI and ILS glidepath not coincident (VGSI Angle 3.00/TCH 41).	Remain within 10 NM
		* LOC only.				CUSKA I-ARJ 5.6 RADAR	
		* I-ARJ 0.1		* I-ARJ 0.8		WIVPA I-ARJ 1.5	GS 3.00° TCH 51
		0.9 NM		0.7		4.1 NM	
CATEGORY	A	B	C	D			
S-ILS 23**	250/24 200 (200-½)						
S-LOC 23	600/24	550 (600-½)	600/60	550 (600-1¼)			
CIRCLING	600-1 546 (600-1)	640-1 586 (600-1)	640-1½ 586 (600-1½)	860-2½ 806 (900-2½)			
WIVPA FIX MINIMUMS							
S-LOC 23	380/24	330 (400-½)	380/26	330 (400-½)			
CIRCLING	560-1 506 (600-1)	640-1 586 (600-1)	640-1½ 586 (600-1½)	860-2½ 806 (900-2½)			

NE-1, 11 JUN 2026 to 09 JUL 2026

NE-1, 11 JUN 2026 to 09 JUL 2026